

HOW TO INSTALLING AND USE LIGHTROOM PRESETS

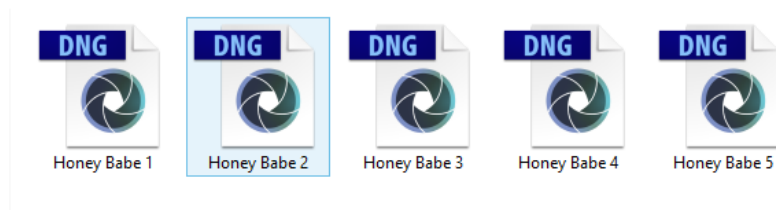
Make sure you have been
download and install
ADOBE LIGHTROOM
on your phone

YOU CAN GET ON :

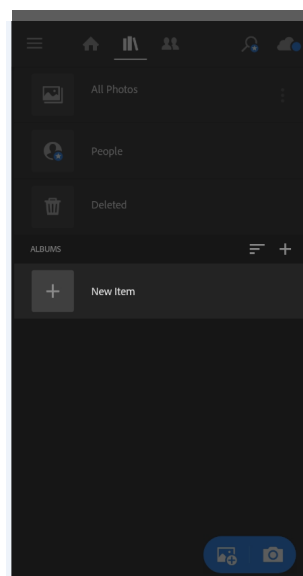


After download your purchases, unzipp/extract file

If you dowload from computer, select all DNG file and move
to your phone.

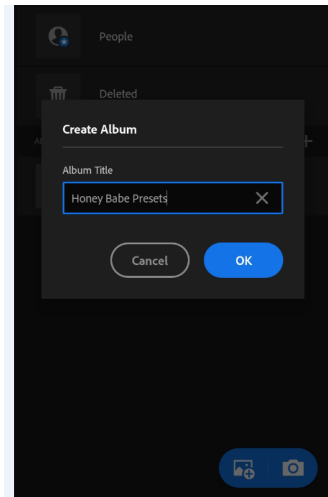


OPEN ADOBE LIGHTROOM

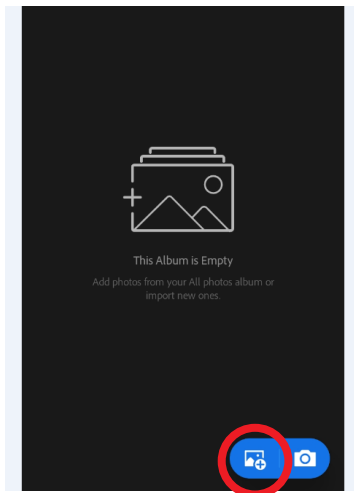


make new album

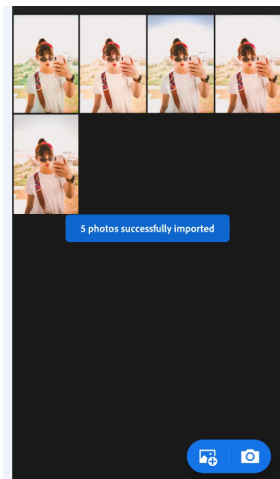
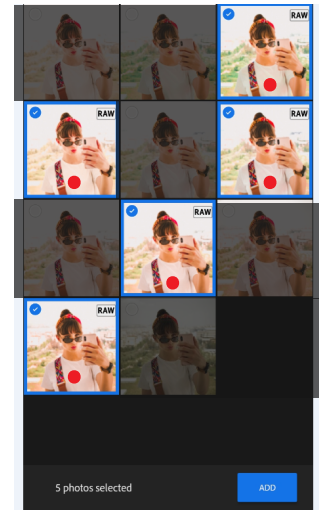
add title



add the dng file



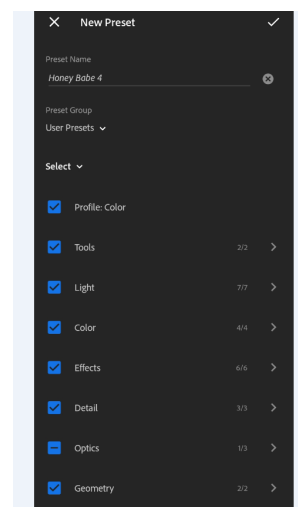
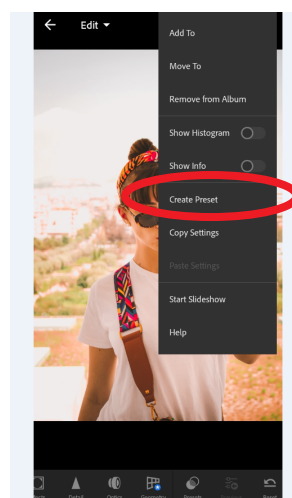
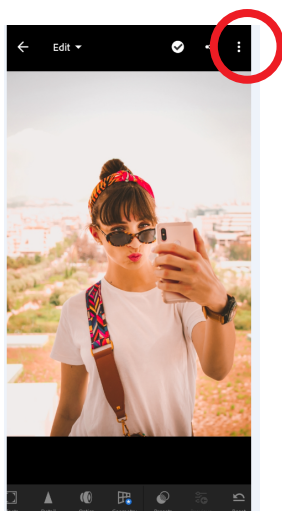
select RAW images



RAW image adding on you album

select one image, wait until open

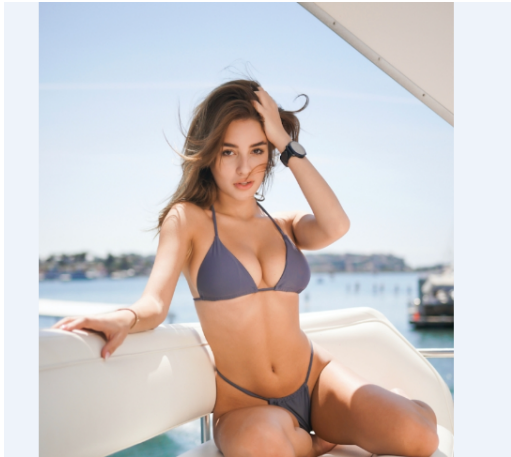
FOLLOW THIS STEP



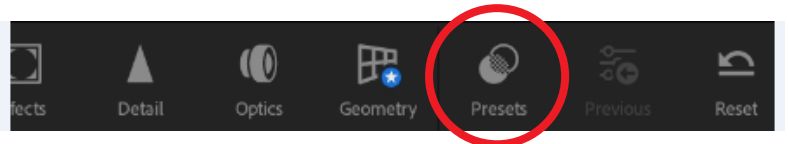
CHECK ALL BOX

SAVE MY PRESETS

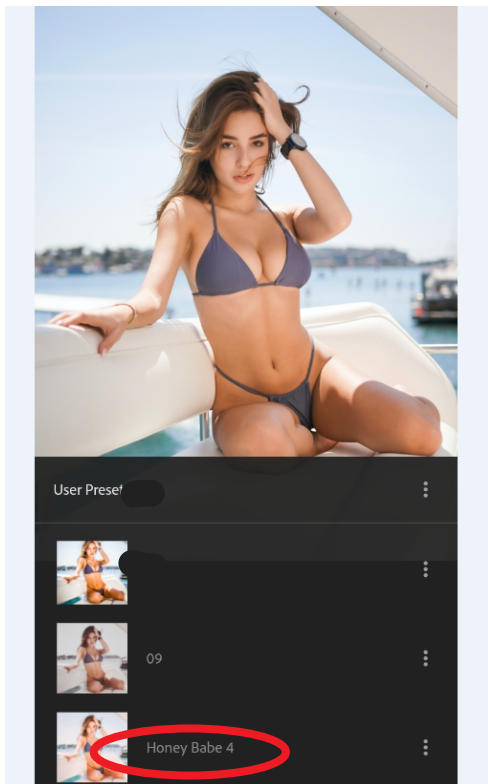
NOW OPEN YOUR IMAGE



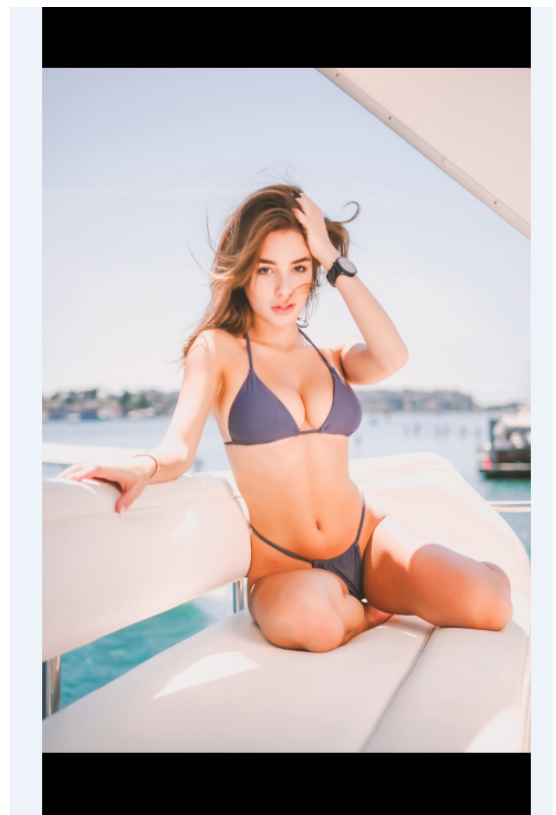
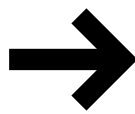
YOUR ORIGINAL IMAGE



SELECT PRESETS



ADD PRESETS



SAVE YOUR AMAZING IMAGES
AND GO UPLOAD :D