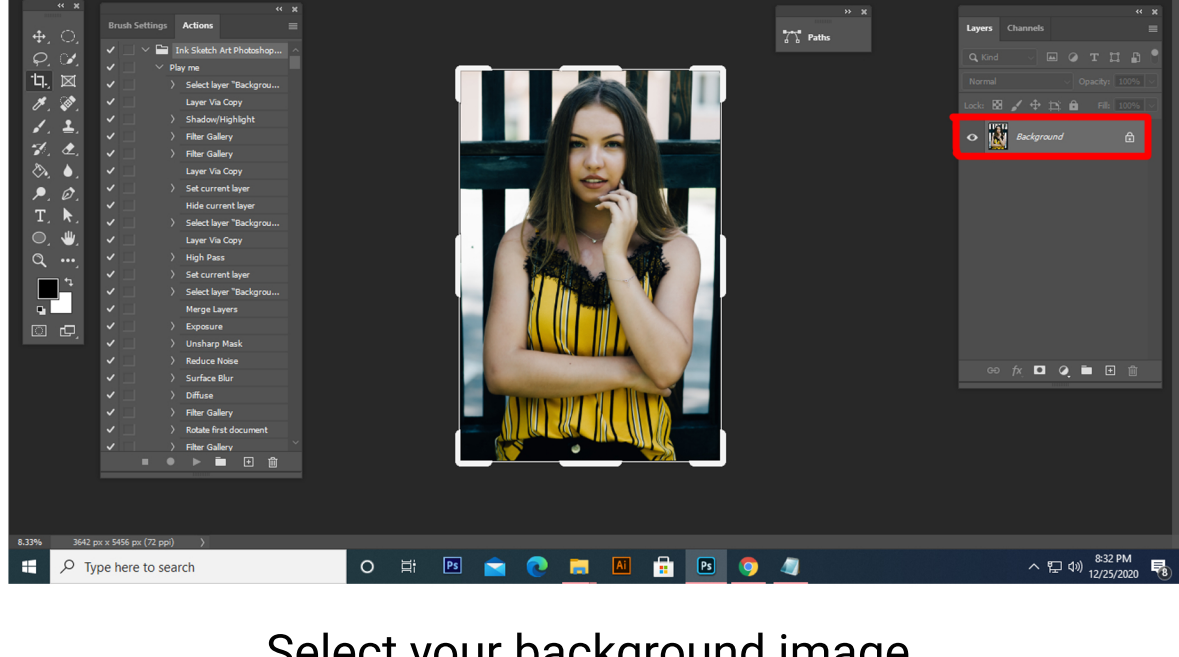
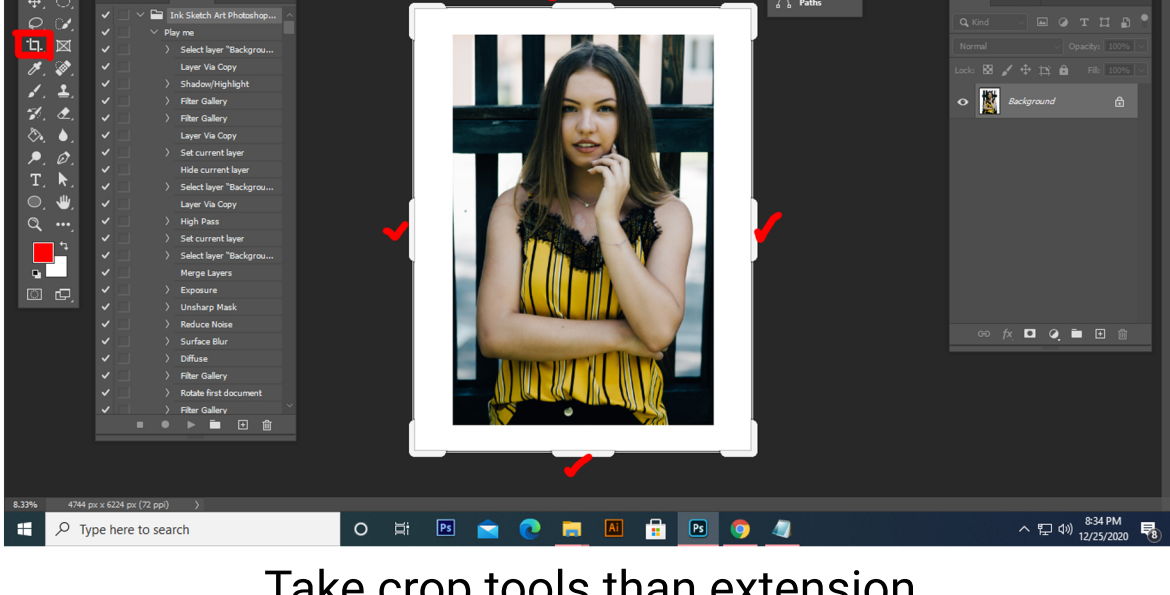


# FOR GOOD RESULT :

For good result first you need extract your canvas area. Simply select your background image and take crop tools than extension all side. And resize your images 3000x2000 or 2000x3000px.



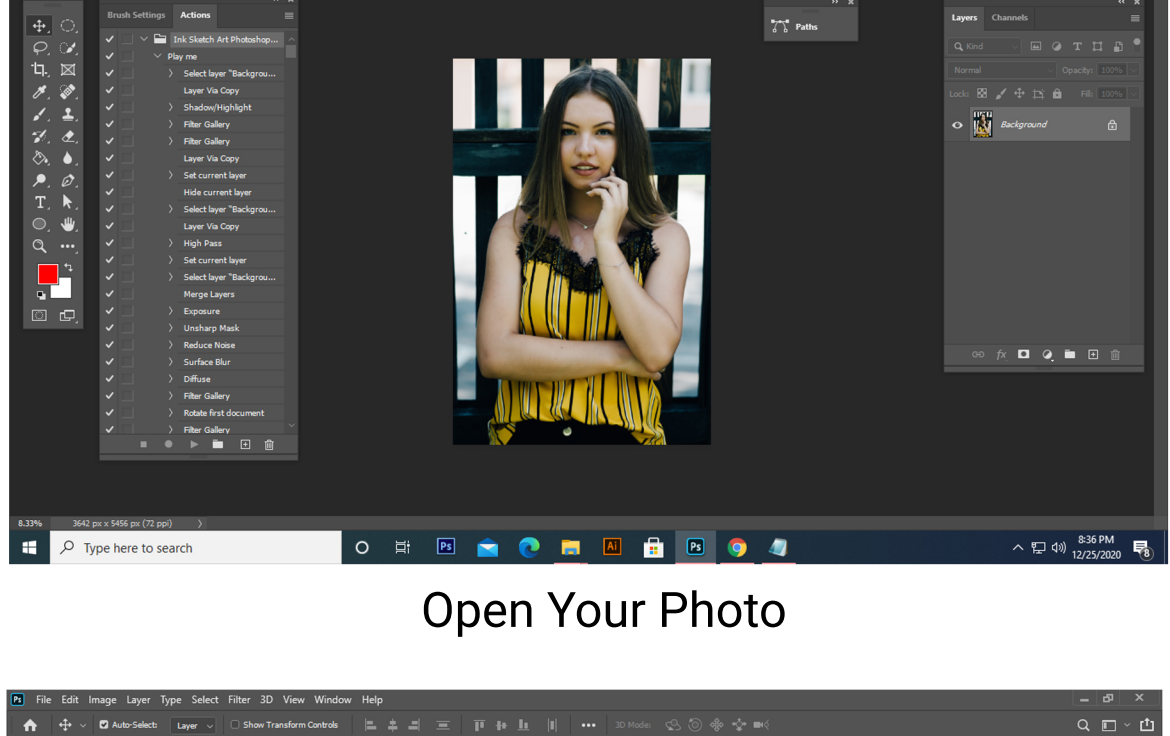
Select your background image



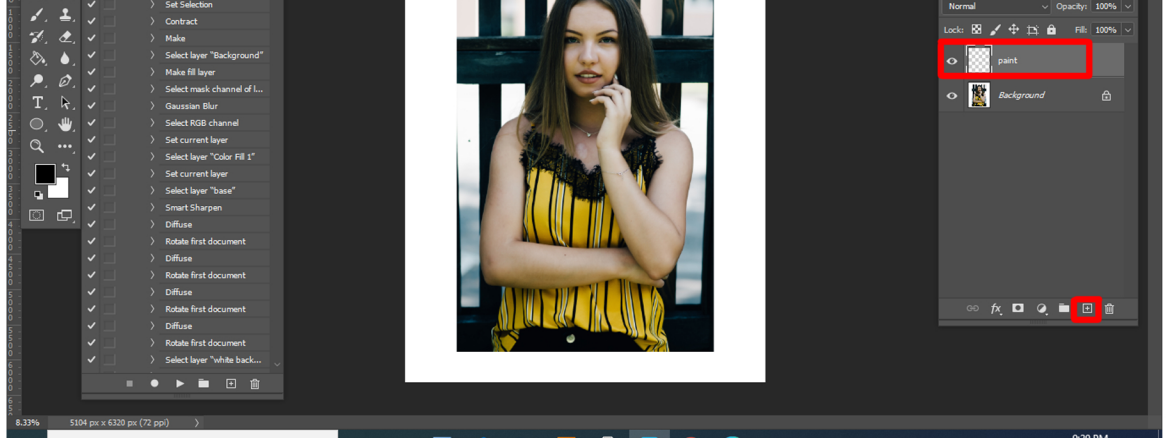
Take crop tools than extension all sides.

## HOW TO Work Action

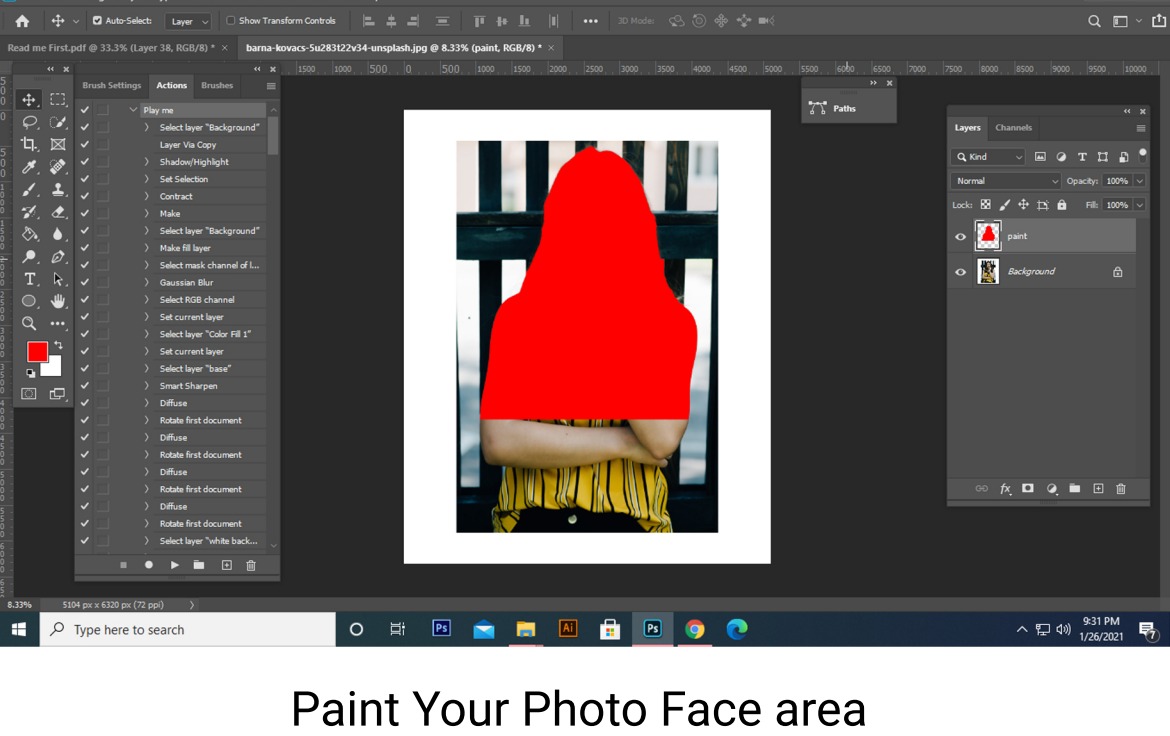
First Open Your Photo Take new Layer and Rename it “paint” (Type in lowercase) and select a brush and brush image area you want and close “paint” layer eye. Keep Selection “bpaint” layer and click Play button.



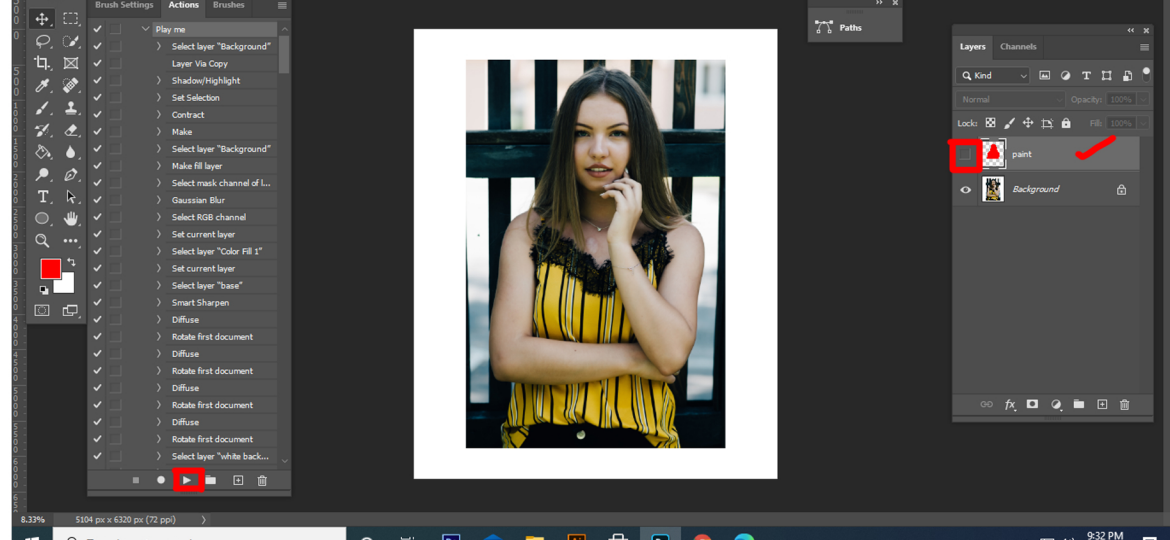
Open Your Photo



Take New Layer Rename “paint”( in lowercase).



Paint Your Photo Face area

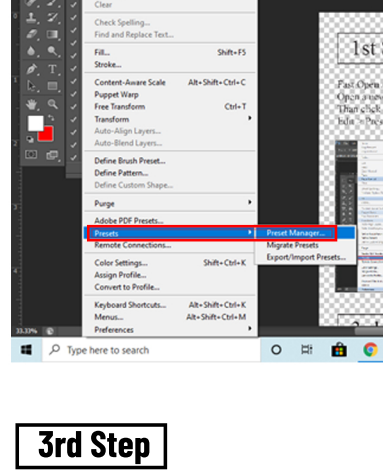


Close “paint” layer eye & keep Selection “paint” layer than click action play button. The action is run...

## HOW TO LOAD BRUSH/PATTERN?

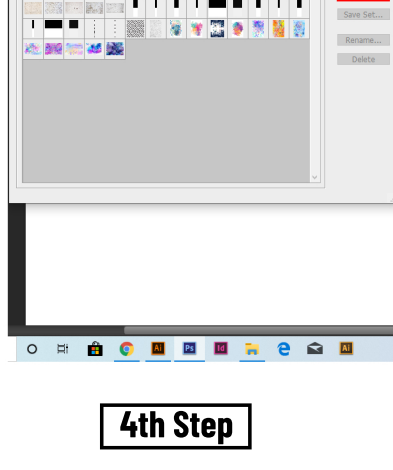
### 1st Step

First open Adobe Photoshop  
Open a new page  
Then click Edit Menu  
Edit > Presets > PresetsManager



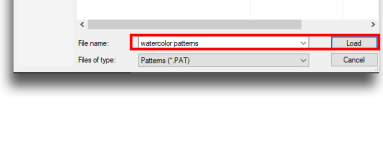
### 2nd Step

Presets Manager > Presets Type > Brush/Pattern  
Than click on Load for load Brush/ Pattern



### 3rd Step

Load > open Brush /Pattern location  
Than select Brush/Pattern And click on Load



### 4th Step

The Brush /Pattern was Load Done  
Than click on Done....

