

2.0

# ARCHITECTURE

• W A T E R C O L O R •



# 01. Install Architecture WC 2.0 Tool:

Download **Pixel Cube Plugin** from here: <https://www.oxygenart.net/ext-pixelcube>, then install it by following the installation instructions inside the download file.

When you install **Pixel Cube** successfully (get freebies tools **here**, in the page bottom), it's time to install the **Architecture WC 2.0 Tool**:

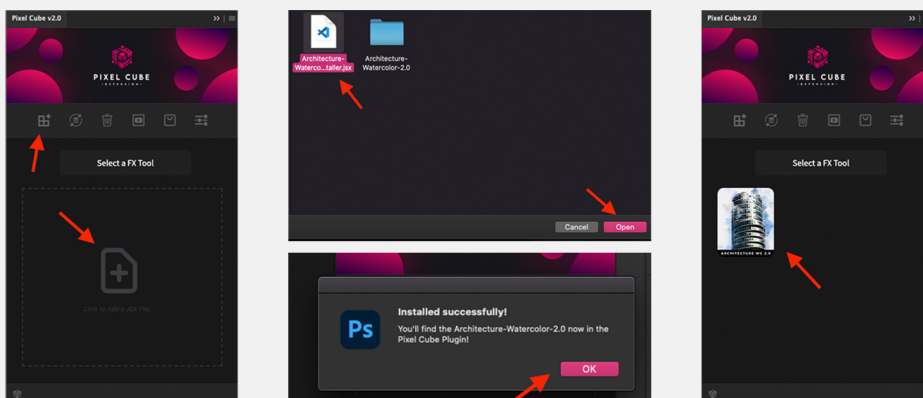
## Installation Method 01:

- Open Pixel Cube Plugin from: Window >> Extensions >> Pixel Cube v2.0.
- If you don't have any FX tools installed before, you'll see the blank page where you can click to add a new one, if you already have an installed FX tool, click on the add FX Tool button from the menu (Top Left Button), you'll see a load pop-up dialogue, browse the tool installer (**Architecture-Watercolor-2.0\_installer.jsx**) from the download folder, Then you'll see the successfully message, reload the Pixel Cube Plugin and you'll see the FX Tool inside it.

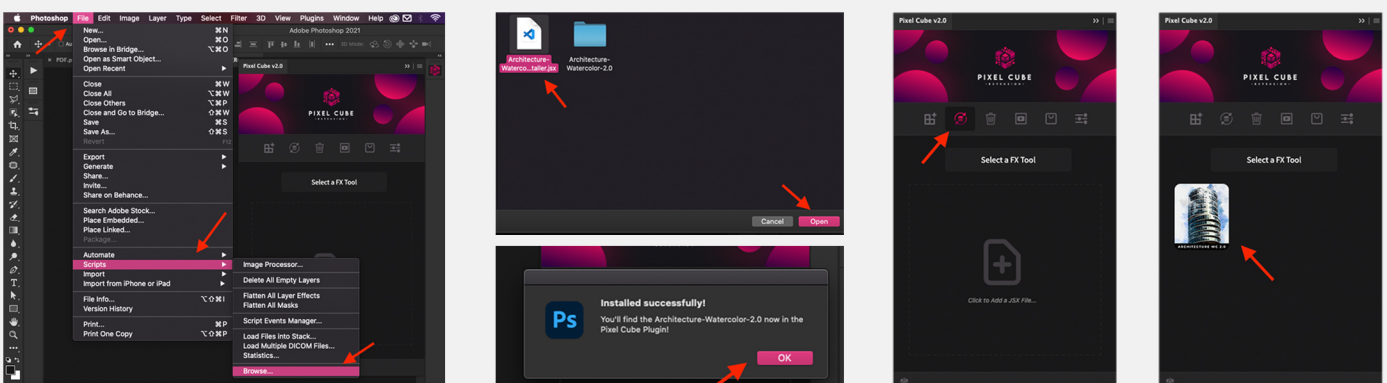
## Installation Method 02:

- Browse the installer file “ **Architecture-Watercolor-2.0\_installer.jsx** ” from: File >> Scripts >> Browse, and open it, Then you'll see the successfully message, reload the Pixel Cube Plugin and you'll see the FX Tool inside it.

### Method 01:



### Method 02:



## 02. Prepar Your Image:

Open your image, and create a mask on your focus area that you want the effect to focus on it, put that mask in a new layer and name it “ mask ”. you can create a mask with 02 methods: Automarically (For Photoshop CC2018+) and Manually.

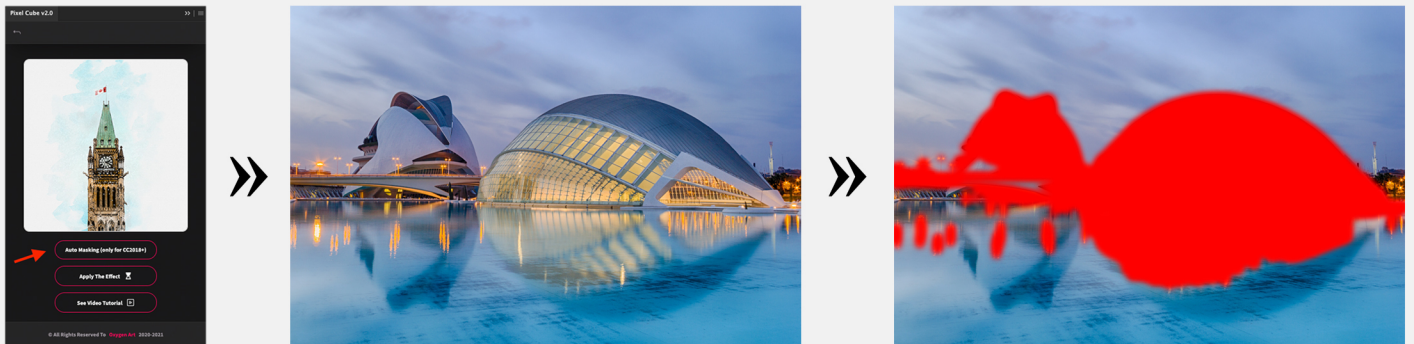
### *Automatically Method:*

This Open is available only for the **Photoshop Versions from 2018 and higher**, so if you have Photoshop CC2017 or 2015.5 jump to the manually method. to create a mask automatically, open **Pixel Cube Plugin** and open the **Architecture Watercolor 2.0 FX**, click on the button (Auto Masking (only for CC2018+)), Photoshop will detect the focus area on your image and make it in a new layer as a mask, with the selected brush, edit your mask as you want.

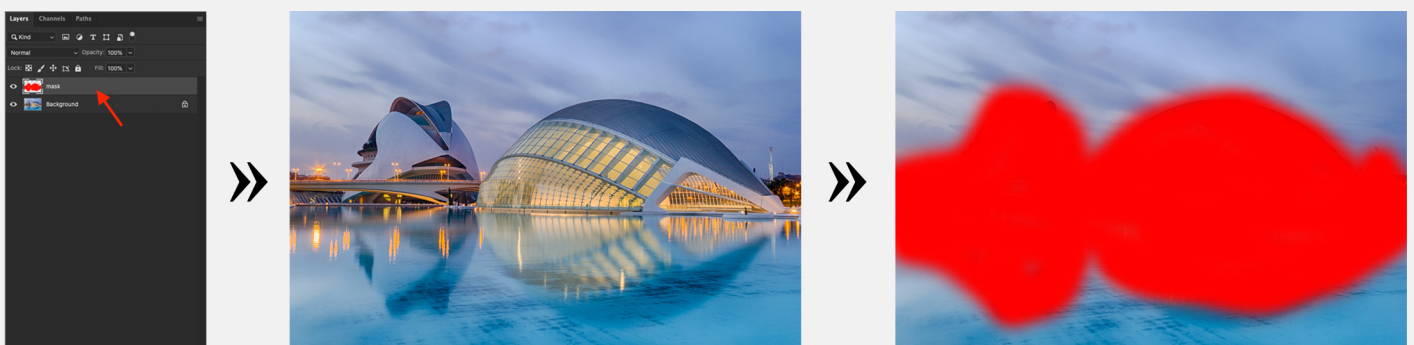
### *Manually Method:*

Create an empty layer (Layer >> New >> Layer), and name it “ mask ” with lowercase, and select a soft brush (We recomanded our brush: **Architecture WC 2.0 - Mask BR**) and brush on your focus area perfectly, with any color you want.

### Automatically Method:

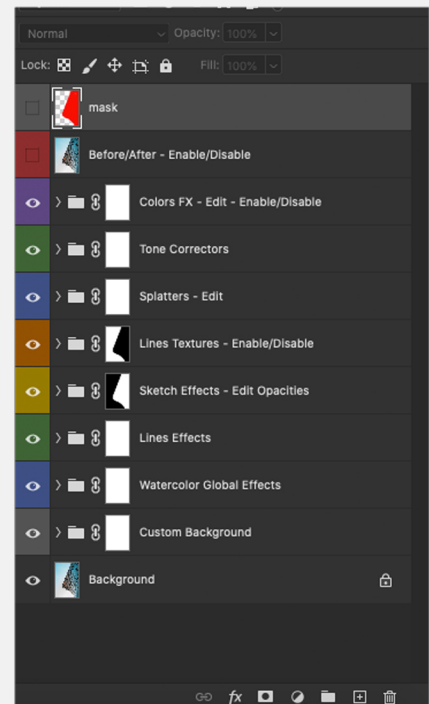
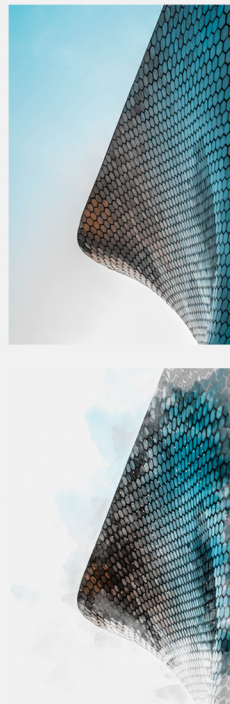
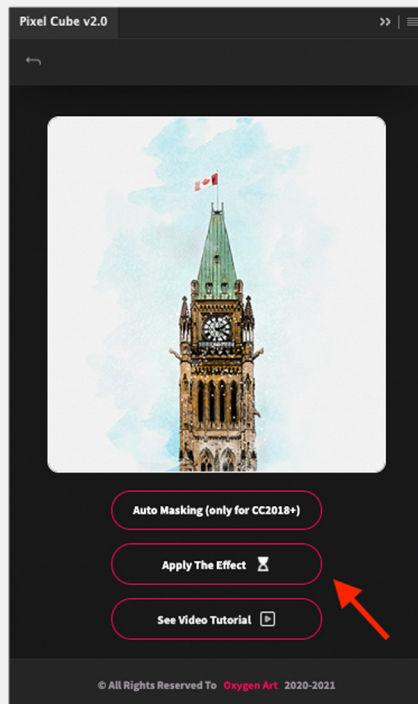


### Manually Method:

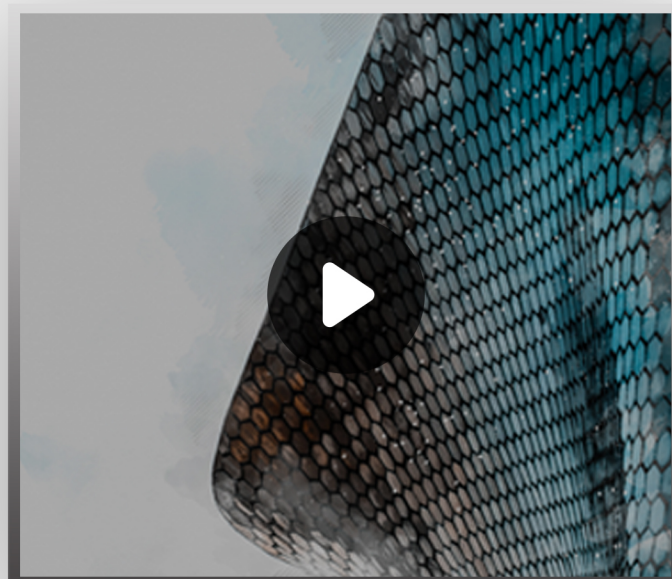


## 03. Apply The Effect:

After preparing your image and creating the mask, you don't need to load the presets, it's included in the plugin, so just click on the **apply the effect** button, wait a few minutes (01 - 03 minutes) until the process finished, **Done!**



for best using experience of how to install and edit final result, watch the video tutorial below:



## 04. Contact & Support:

### ***OXYGEN ART Support:***

If you have any question about  
Architecture WC 2.0 Tool or Pixel Cube Plugin  
feel free to contact us at:  
**contact@oxygenart.net.**

If you like our product, give it 05 stars review from **here**,  
that's will help us a lot



**THANK YOU!** 