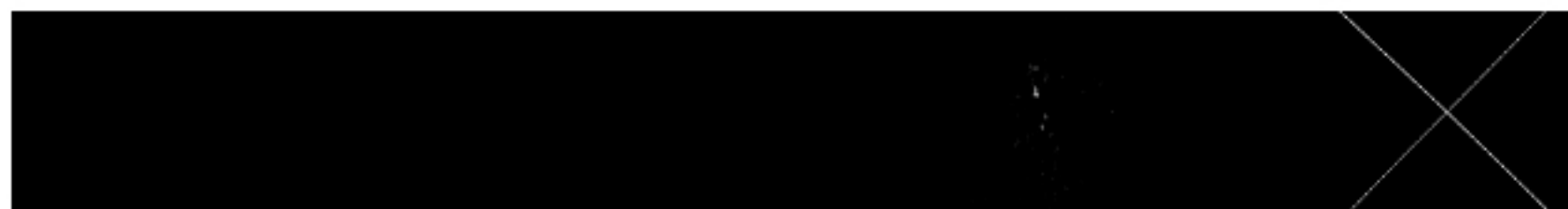




**BANGING
JOINTS[™]**



Thank you for your order.

To learn more about this product and its features, please read thru the following documentation below.

Questions regarding the product? Our customer service team is always happy to help.
Email us any time at bangingjoints@gmail.com



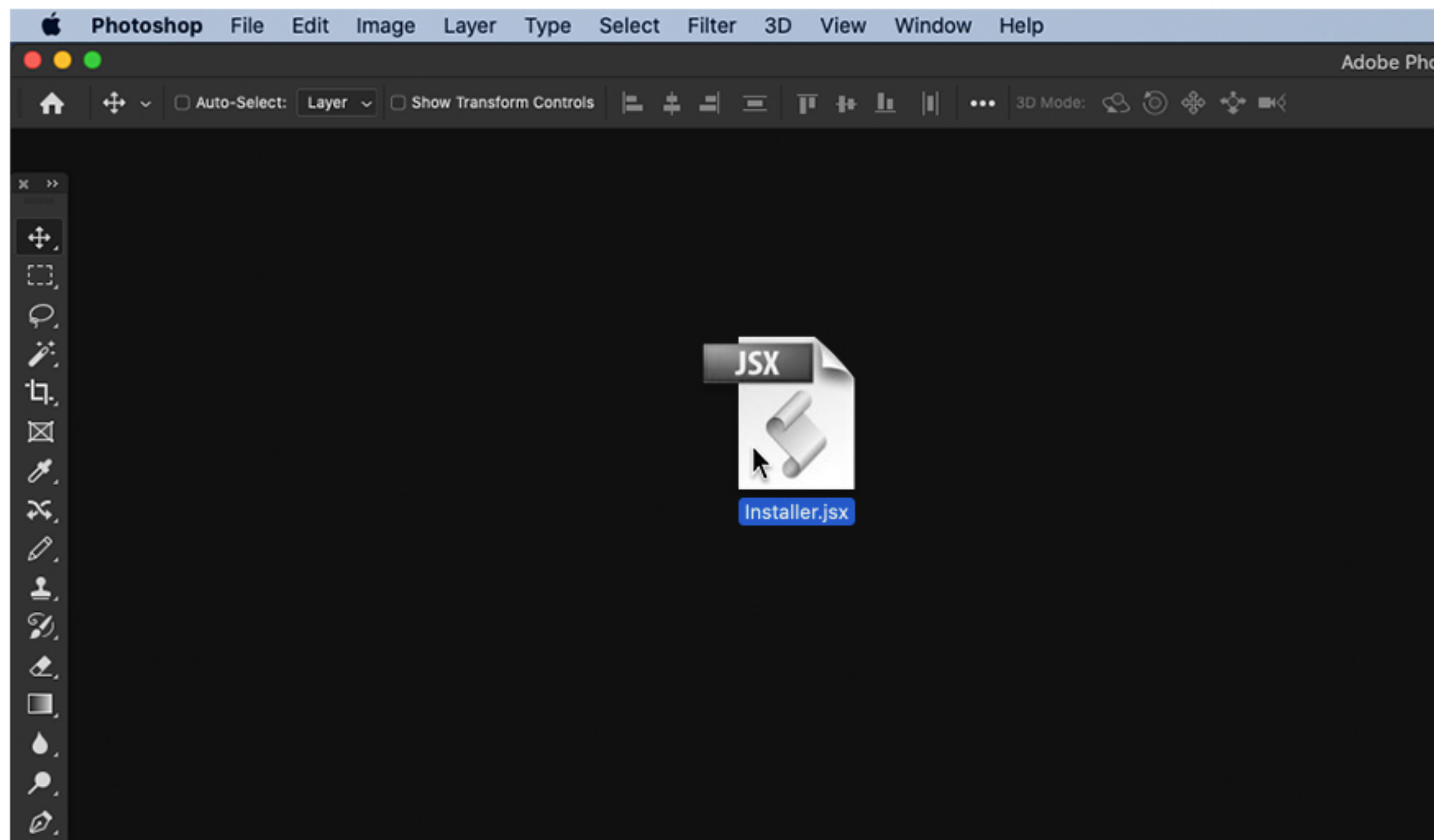
How to Install

Install the Extension Using an Installer.jsx File

1. Download Plugin and unzip the archive.
2. Run Photoshop (for Windows user: right-click on the PS icon, choose "Run As Administrator").
3. Navigate to the menu File > Scripts > Browse...
4. Select an **installer.jsx** file from the downloaded folder.
Follow the instructions. **Restart Photoshop.**
You will find extension at Window > Extensions > **Matrix Swiper Plugin.**

Fast Install Using an Installer.jsx File

1. Drag the file **installer.jsx** onto the Photoshop
2. Follow the instructions. **Restart Photoshop.**
You will find extension at Window > Extensions > **Matrix Swiper Plugin.**



How to Uninstall

Uninstall the Extension Using an UNINSTALLER.jsx File

The installer, while deploying your assets, will write the **uninstaller script** in its same folder. This can be used later on to remove the product.

1. Run Photoshop (for Windows user: right-click on the PS icon, choose "Run As Administrator").
2. Navigate to the menu File > Scripts > Browse...
3. Select an **Matrix Swiper Plugin_V1.0.0 - UNINSTALLER** file from the downloaded folder.
4. Follow the instructions. **Restart Photoshop.**

Manual Uninstall

Windows

Go to (System): C:\Program Files (x86)\Common Files\Adobe\CEP\extensions\
Find your extension folder, select the folder and press delete.

1. Open a Finder window
2. Select Go > Go to Folder... in the menu bar.
3. Type ~/Library in the input field and click Go.

Mac (admin rights)

Go to: ~/Library/Application Support/Adobe/CEP/extensions
Find your extension folder, select the folder and delete it.

Mac (no admin rights)

Go to: ~/Users/username/Library/Application Support/Adobe/CEP/extensions
Find your extension folder, select the folder and delete it.

Interface

Effect Modules

1 There are three panel module tabs: **Cloner, Matrix, Swiper**.
You can navigate through the tabs by clicking on their title in the navigation bar.

All effects are created within groups. The groups will be collapsed after the script finished its work, to keep Photoshop Layers panel organized and clean.
Now you can select any of its layers and start making adjustments.

Direction Render Buttons

2 Start your work by activating any Direction Button.
The activated Direction Button creates the “Source” layer and sets up the “Rectangular Marquee”(M) tool for you.

As long as any Direction Render Button activated, the plugin is in standby mode and will start the render as soon as it finds any active selection on a canvas.

Therefore, please don't forget to deactivate the Direction Render Button if you want to use selection as a standard Photoshop tool.

Auto Direction Render Button

3 Semi-auto mode lets you apply the effect horizontally or vertically according to the location of the active selection.

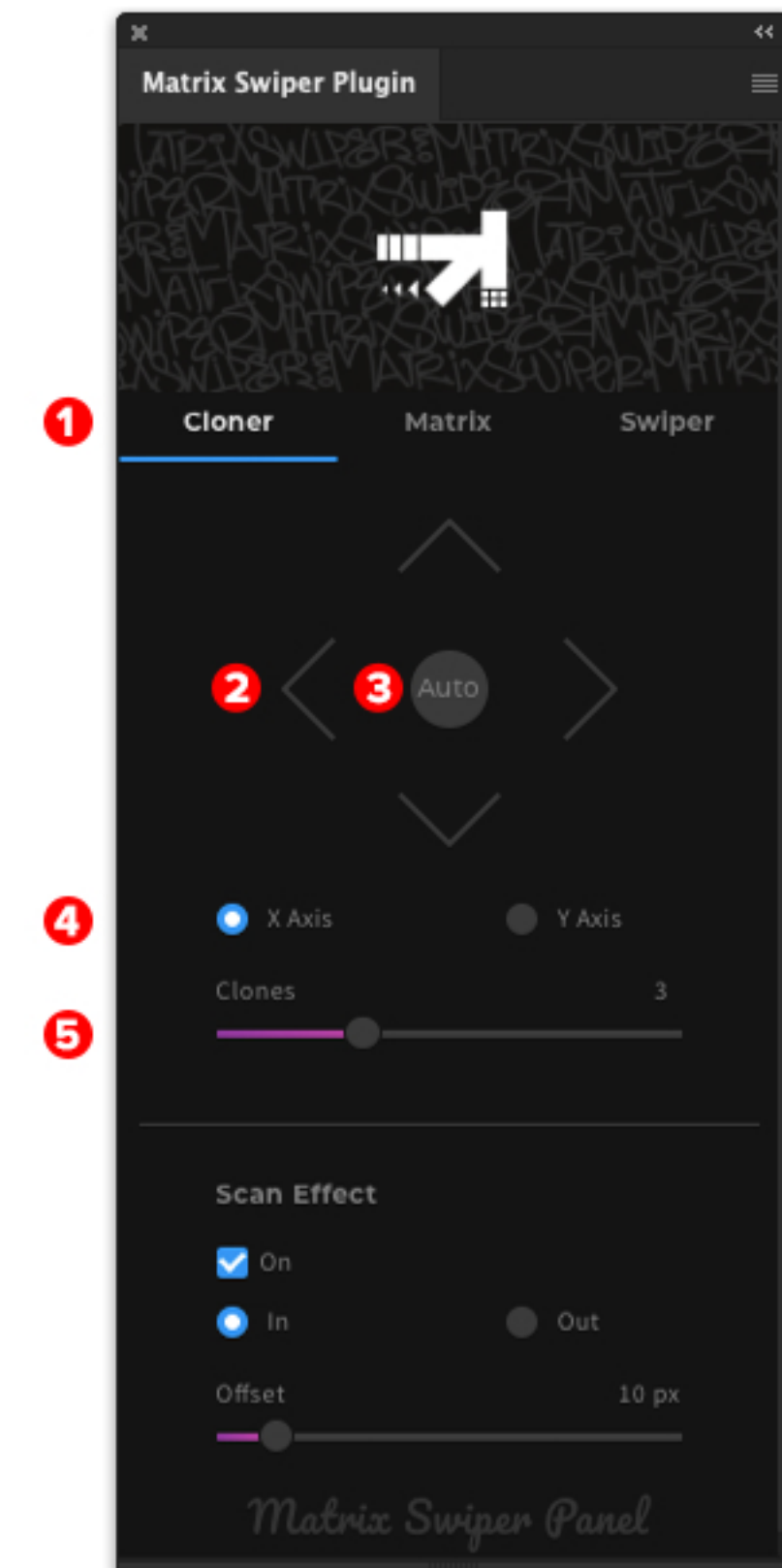
If a selection was drawn on the left side of the canvas (X-Axis active), the effect will render only horizontally to the left and vice versa.
If a selection was drawn on the top side of the canvas (Y-Axis active), the effect will render vertically to the top.

X Axis / Y Axis

4 Works only when the Auto Direction Button is active.
Defines if effect applies horizontally or vertically.

Clones

5 The slider allows you to define the number of copies.



Scan Effect

❶ If the "On" checkbox is active, a scan effect will be applied to the layers.

In / Out

❷ Defines if scan effect created inside or outside the bounding area layer.

Offset

❸ The slider allows you to define how long the scan effect will be.

Mix / Flip

❹ Defines if the cells will be shuffled or just flipped within a grid.

Cells

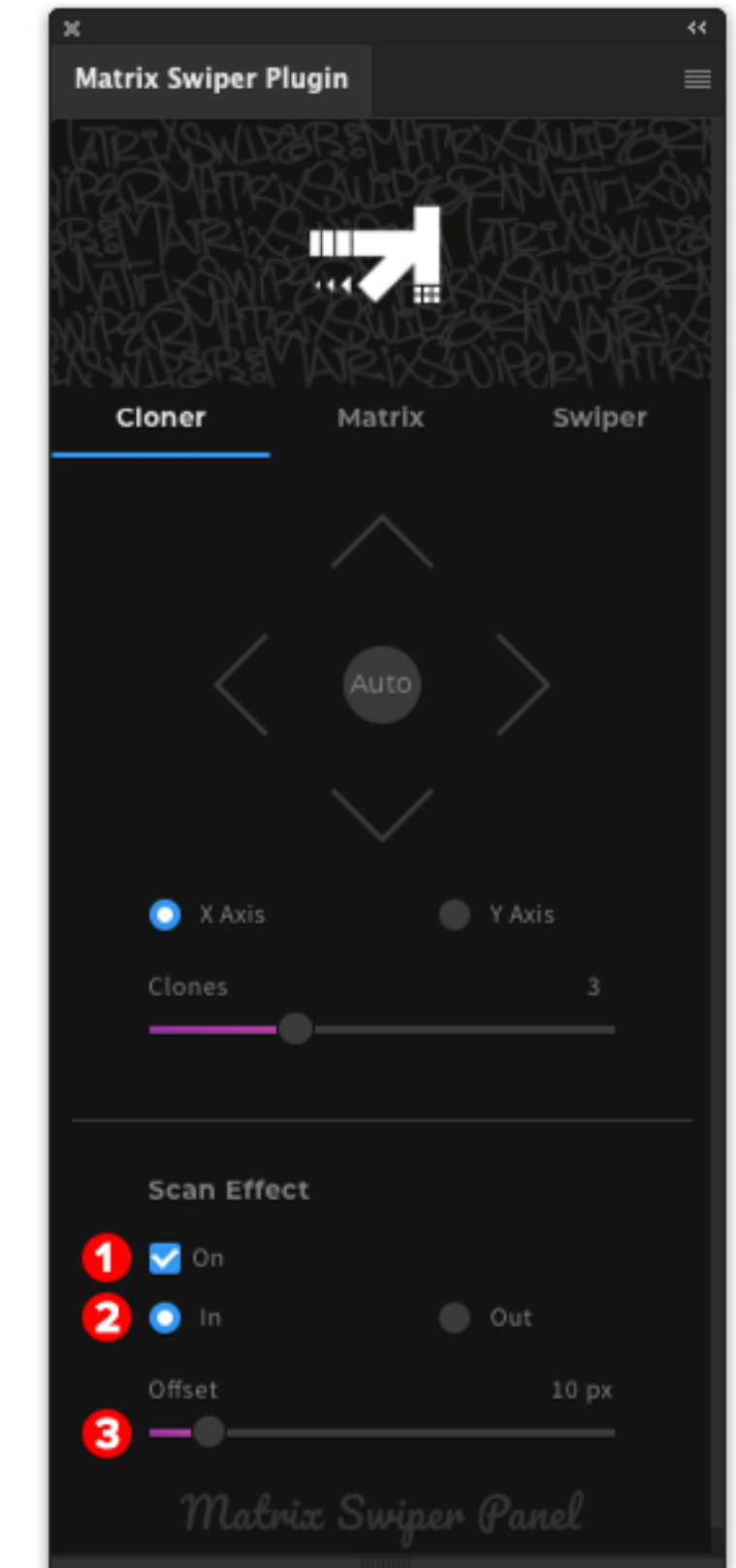
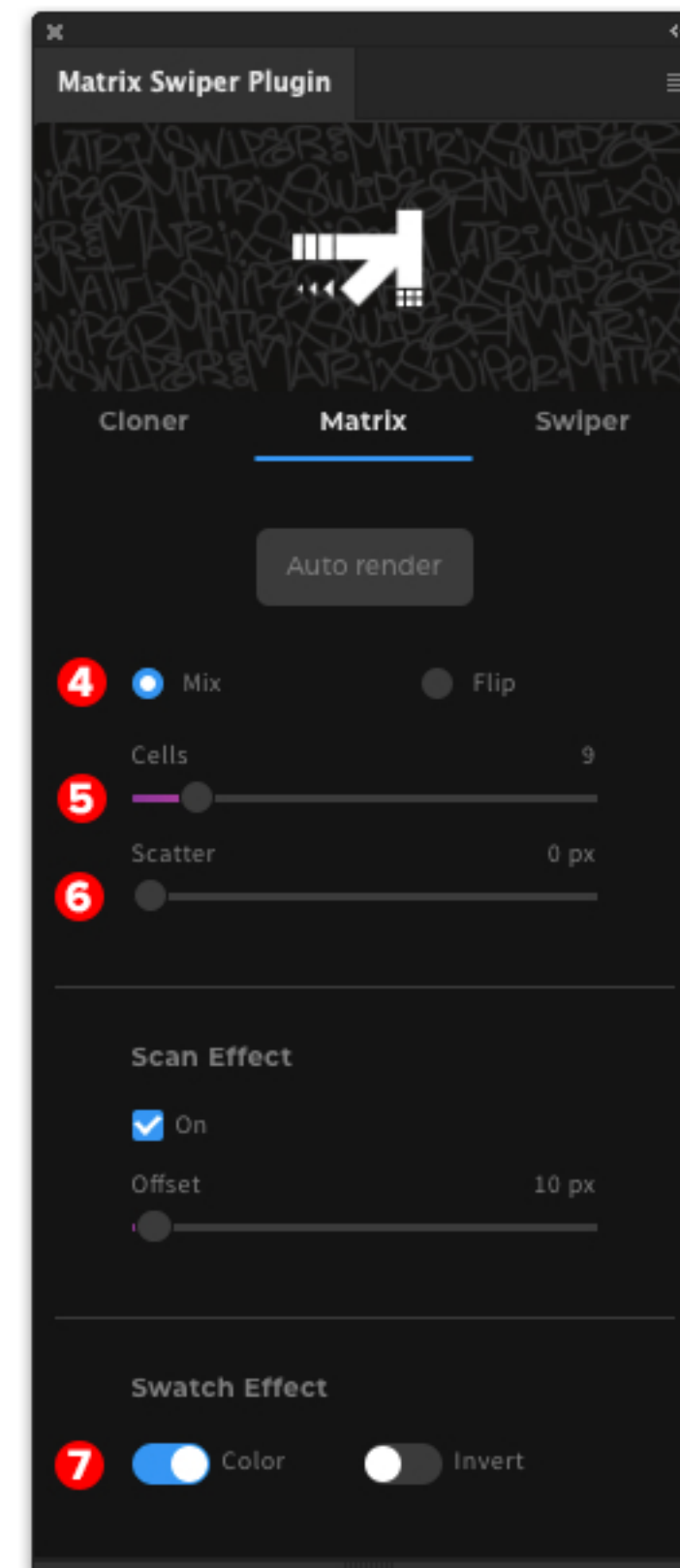
❺ The slider allows you to define the number of cells in a grid.

Scatter

❻ The slider lets you define the scale and rotation variation of cells.

Swatch Effect

❼ If active, a **Color** or **Invert** fill effect will be applied as random swatches on top of all layers inside a group.
The following effect applied non-destructively, meaning you can always come back and fine-tune it or turn it off.



Swiper Tab

❶ The Swiper tab button automatically toggles the Photoshop Timeline panel for your convenience. This panel you can find under Window > Timeline.

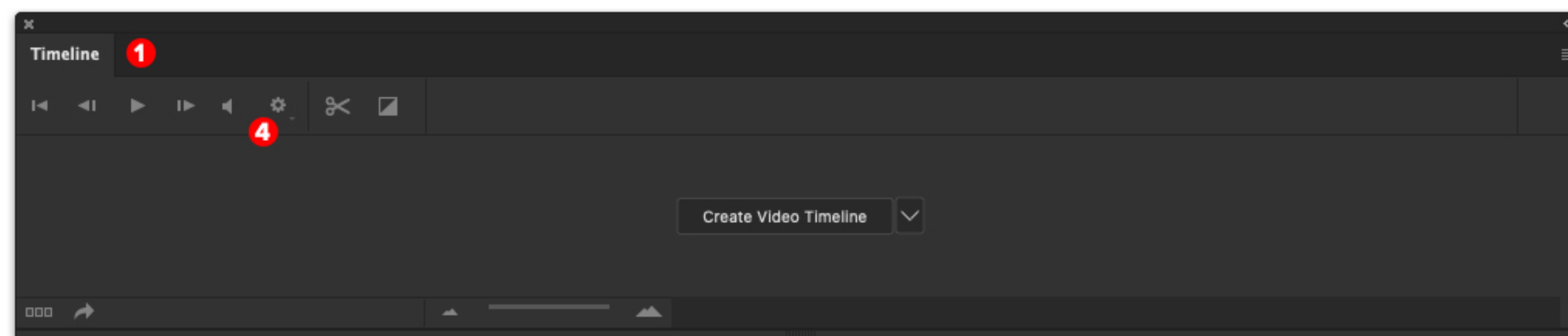
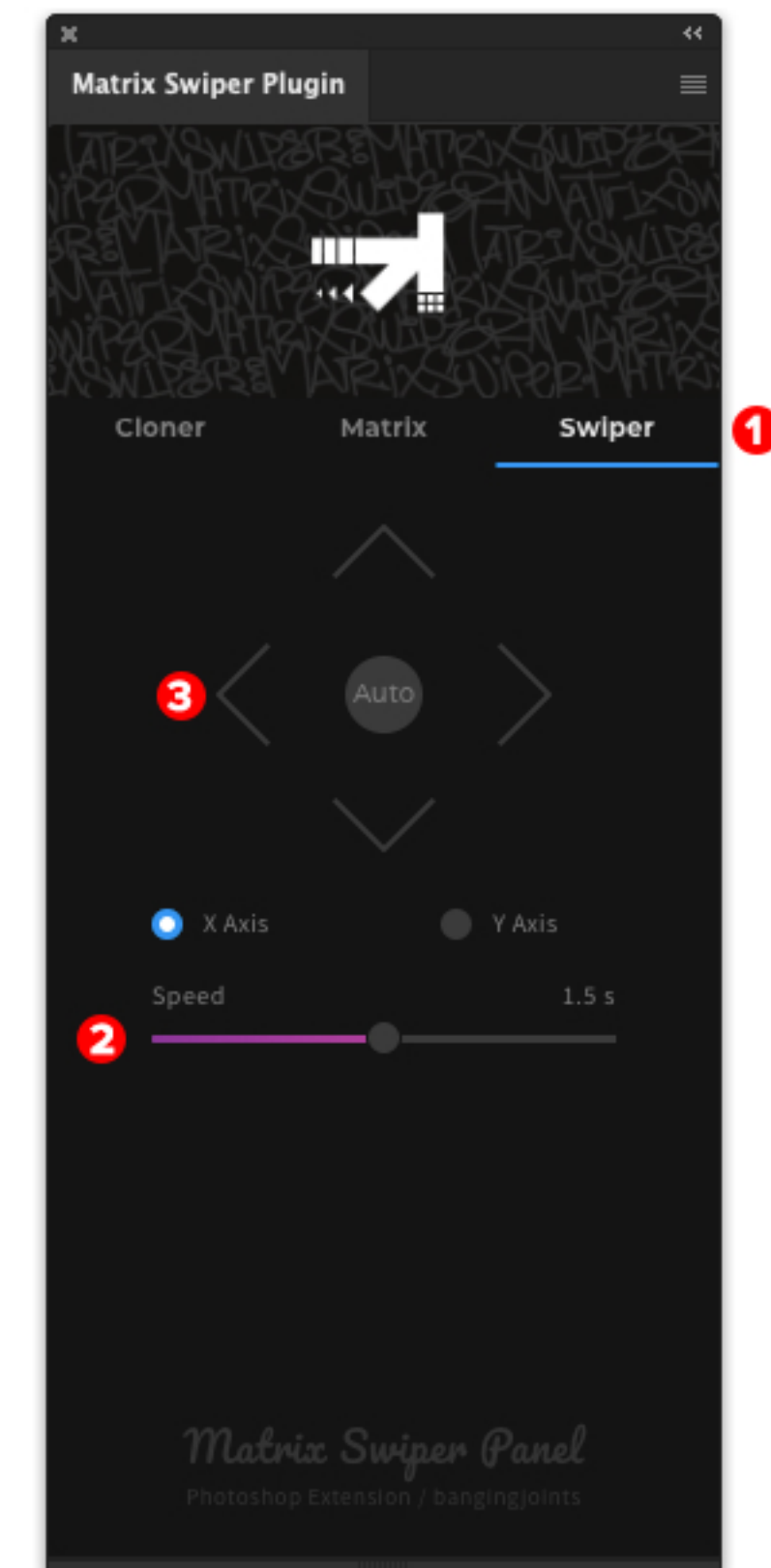
Speed

❷ The slider allows you to define the swipe animation speed.

To create swipe animation effect:

1. Press any ❸ **Direction Render Button** to make it active. Now the plugin is in standby mode and will start the render as soon as it finds any active selection on a canvas.
2. Draw the selection on a canvas with Rectangular Marquee (M) tool.
3. Press spacebar to play and stop the animation.

The first playback of the animation will be slow because Photoshop needs to cache the newly generated information. Set the timeline of Photoshop in looping mode, to do it, click on ❹ the cogwheel settings little icon, then select “Loop Playback”.



Export

Image

To save a static image, go to menu File > Save As.
Remember to position the timeline cursor on the frame you want to export.

Gif

To save an animated Gif, go to menu File > Save for Web

Standard export settings setup will be:

TYPE: Gif
PALETTE: Perceptual 256
DITHER: Diffusion 100% (lower dither = lower file size, but less quality)
TRANSPARENCY: Yes
LOSSY: 10 (higher lossy = lower file size, but less quality)
LOOPING OPTION: Forever

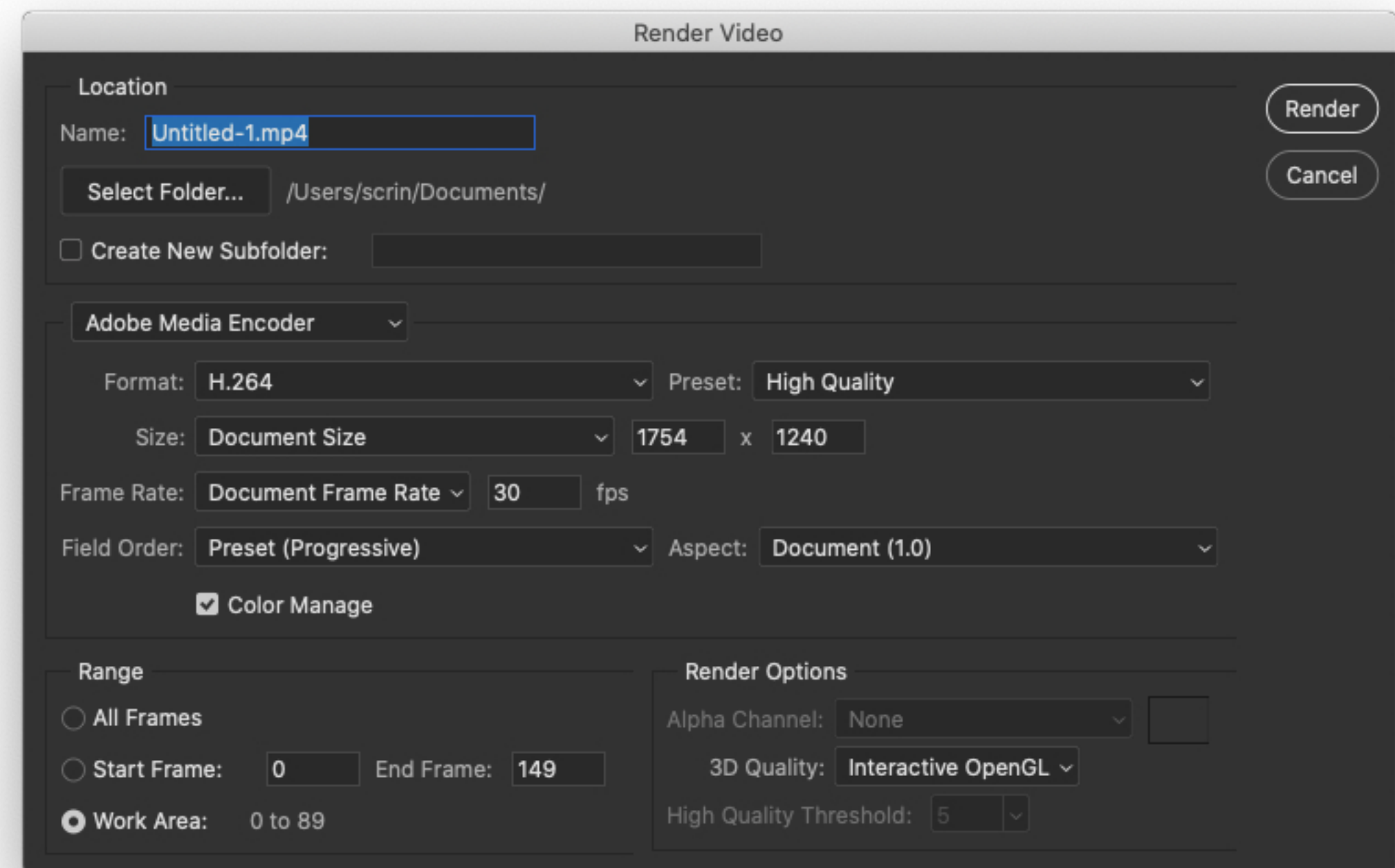
Video

For exporting a video go to menu File > Export > Render Video. (old Photoshop versions)

Or click the little menu icon **1** at the top-right of the Timeline panel, and select **Render Video**.
Select the folder where to save the video and then select format and preset.

Use the following presets:

- H.264 with High quality Preset, it'll be a nice quality video and the size will be very low
- QuickTime with Animation High Quality, it'll be a very good quality video, the file size will be higher



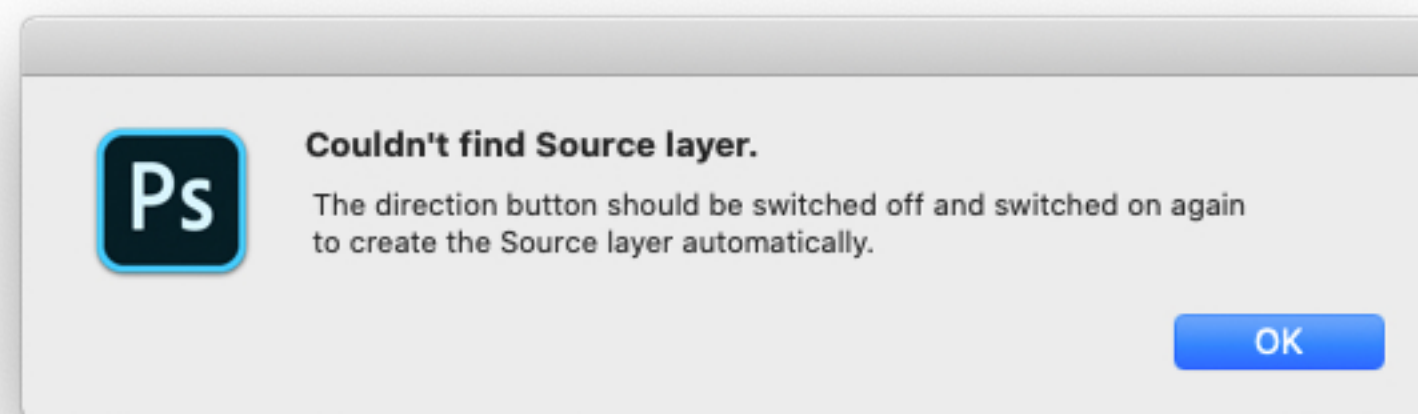
Troubleshooting

The Plugin pops out and disappears quickly.

Go to: Photoshop > Preferences > Plug-Ins
Make sure the following checkboxes are active.
If not, enable it and restart Photoshop.

No Source layer

If you see this message,
you must have accidentally deleted the “Source” layer.
Just follow the window message instructions to create a new one.



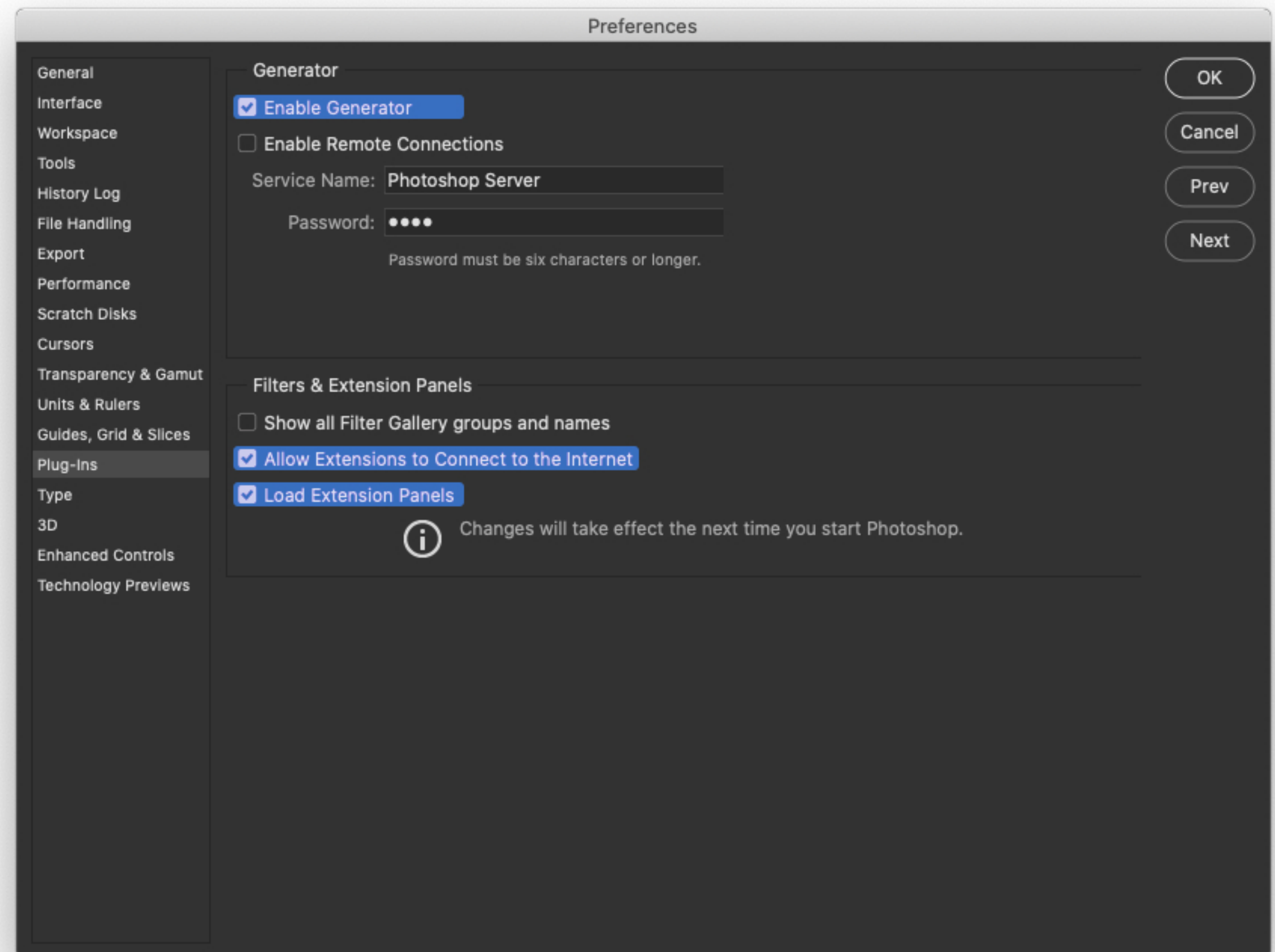
Animation flickering

Animation flickering may occur when you changed the “Animation” folders order.
To fix it - ungroup all “Animation” folders (Layer > Ungroup Layers). Now you can arrange animation layers.

Photoshop 2018 animation bug

Animation flickering may occur when you created the swipe effect.
To avoid flickering, don't draw the selection on top of the previously created design layers.
The animation should be created on a flattened image:

1. Delete previously created "Source" layer.
2. Activate any Direction Render Button to create a new "Source" layer.
The layer will be created on top of the other layers (folders)
3. Now draw a selection to create flicker-free animation





Hope you are happy with your purchase
Thank you for choosing our products

