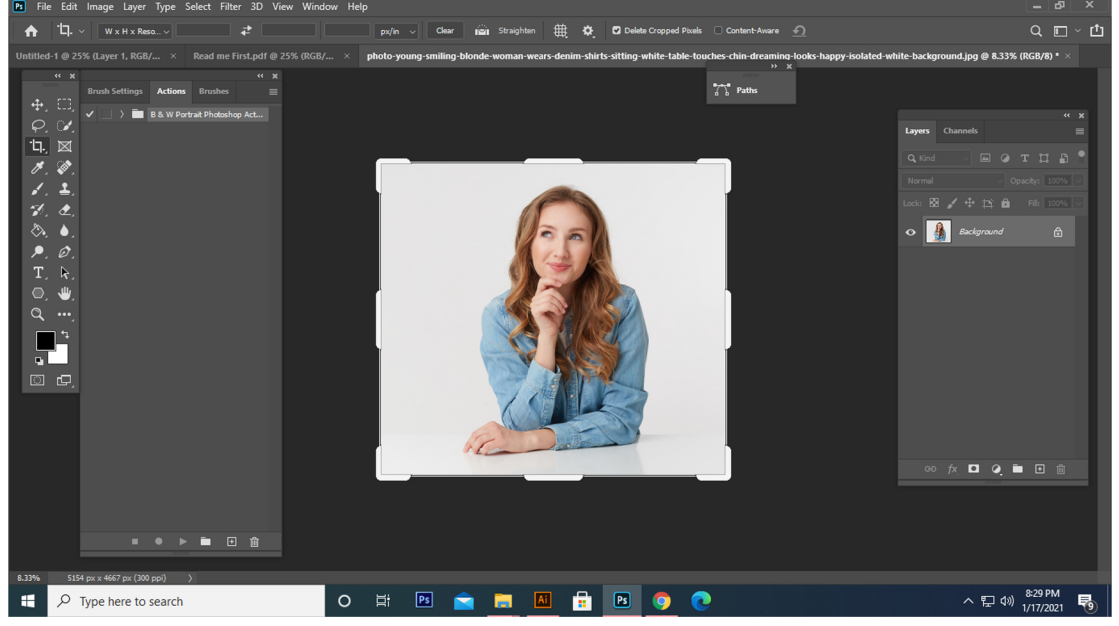
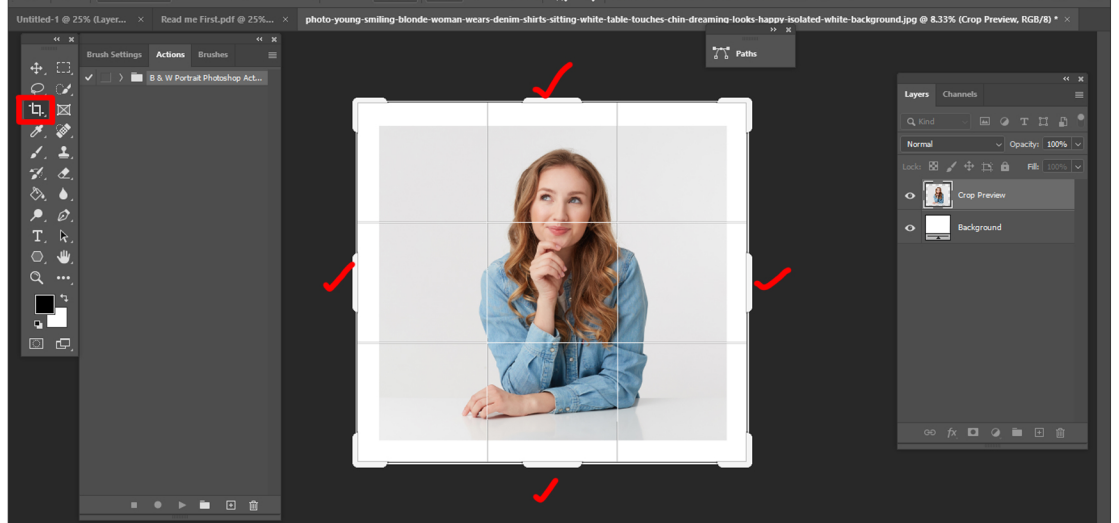


FOR GOOD RESULT :

For good result first you need extract your canvas area. Simply select your background image and take crop tools than extension all sides.



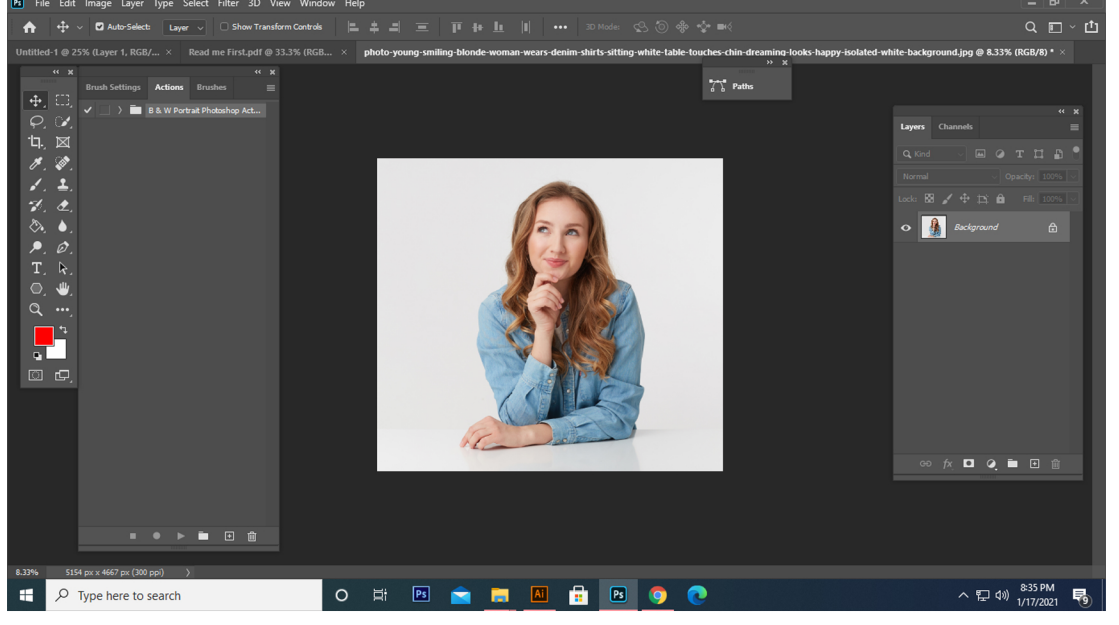
select your background image



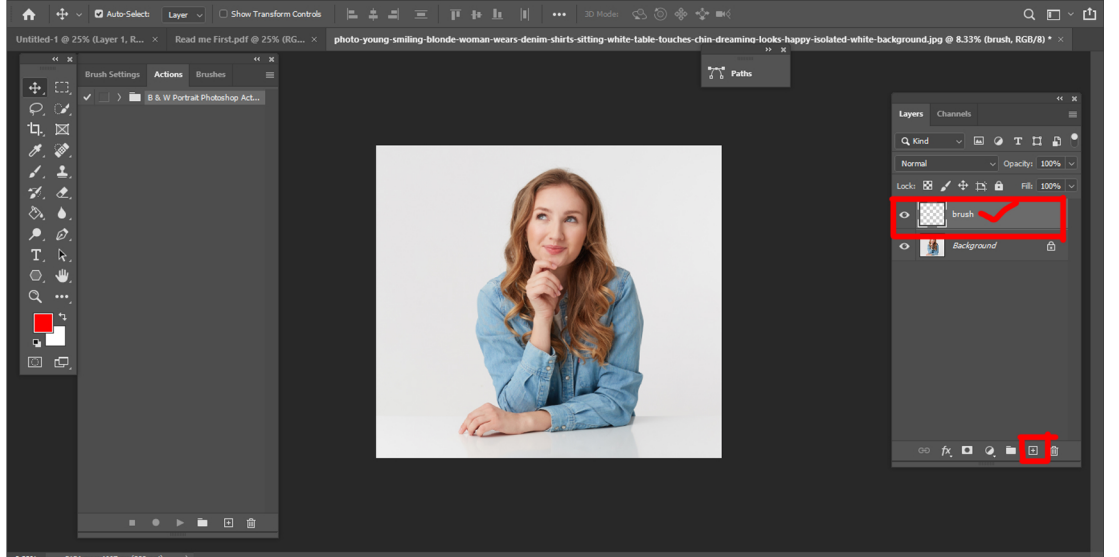
Take crop tools than extension all sides.

HOW TO Work Action

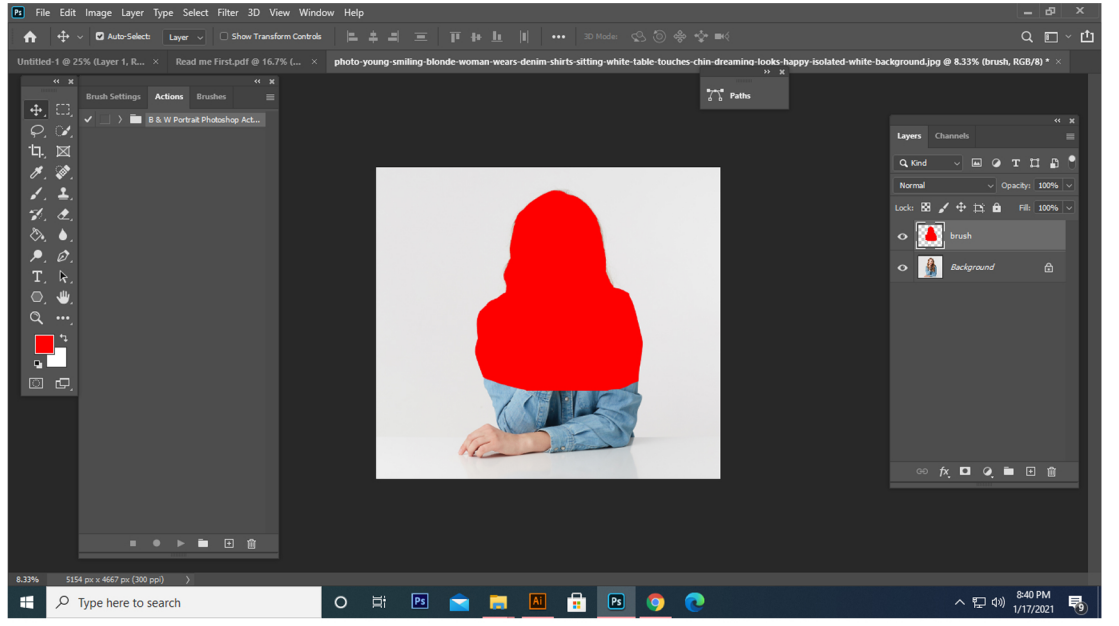
First Open a Photo Take new Layer and Rename it brush (brush Type lowercase) and select a brush and brush image area you want and close brush layer eye. Keep Selection brush layer and click Play battun.



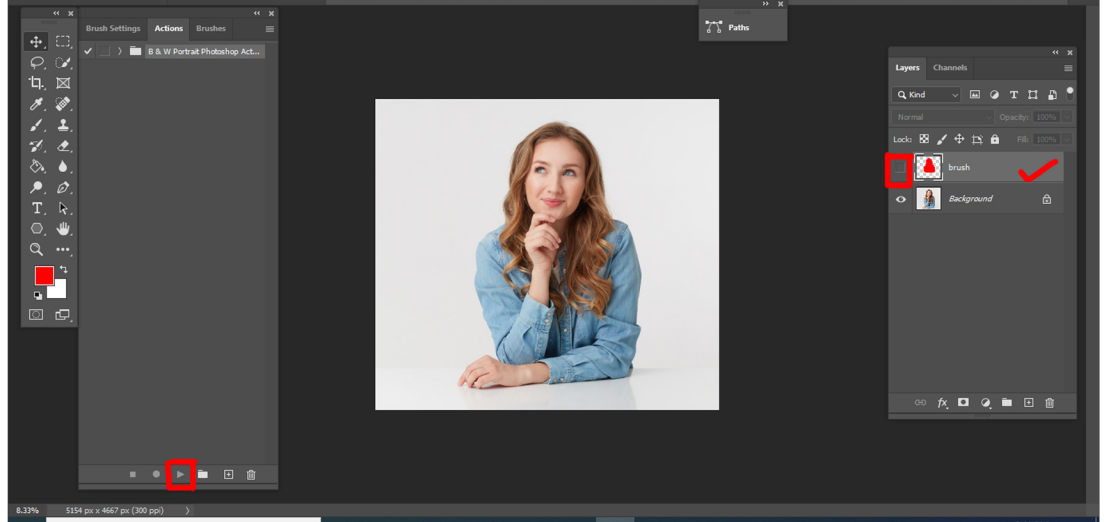
Open Your Photo



Take a new layer and rename “brush” in lowercase



brush your photo

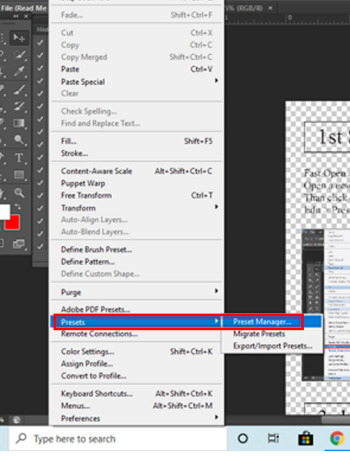


Close brush layer eye & keep Selection brush layer than click action play battun. The action is run...

HOW TO LOAD BRUSH/PATTERN?

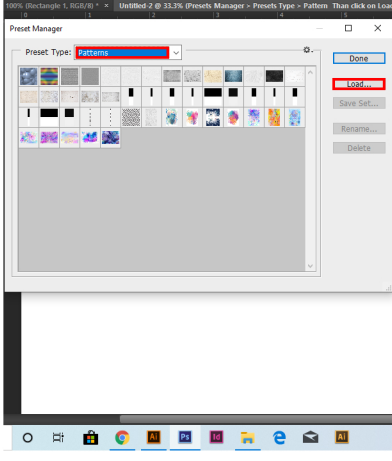
1st Step

First open Adobe Photoshop
Open a new page
Than click Edit Menu
Edit > Presets > PresetsManager



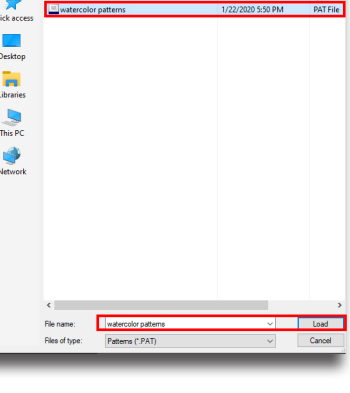
2nd Step

Presets Manager > Presets Type > Brush/Pattern
Than click on Load for load Brush/ Pattern



3rd Step

Load > open Brush /Pattern location
Than select Brush/Pattern And click on Load



4th Step

The Brush /Pattern was Load Done
Than click on Done....

