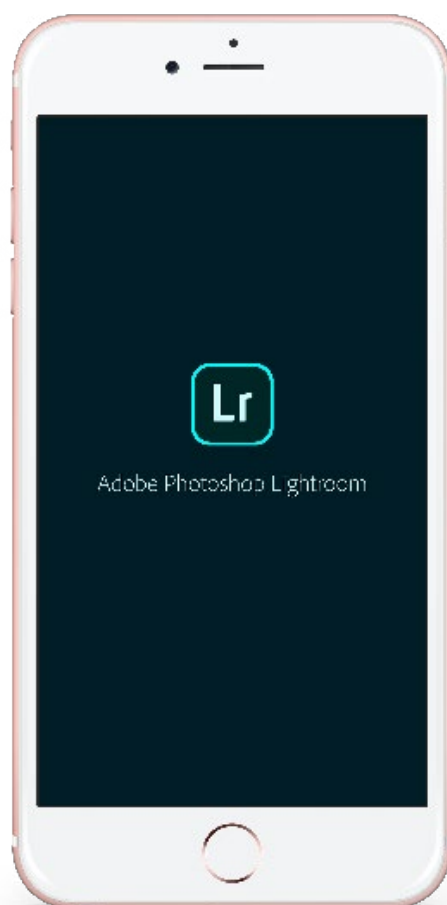


FALLONTRAVELS.COM

# How to add Presets to *Lightroom Mobile* CC



[Click Here to Download Your Presets](#)

THANK YOU FOR YOUR PURCHASE!

I have a feeling that you purchased these presets because you're an incredibly talented content creator at heart, but the weight of Lightroom overwhelm is starting to get the best of you. I understand your struggle because I've been there too, friend!

This program can certainly be intimidating when you're just starting out. So we're gonna get through it together - promise!

*Ready?*

Good - let's get to it!

*xo, fal*

*ty—*

Be sure to follow along my travel journey on Instagram at [@fallon.travels](https://www.instagram.com/fallon.travels) & use the hashtag [#FallonTravelsPresets](https://www.instagram.com/explore/tags/FallonTravelsPresets) so I can feature you on my account!

# 1. Download Lightroom & Dropbox

Before you begin, you'll need to make sure you have both the Dropbox and Lightroom CC apps installed on your phone. These are both free apps that are available for iPhone and Android users. Click the icons or links below to download!

[LIGHTROOM](#)

[DROPBOX](#)

You'll also need to create a free account before you can use the Lightroom CC app; this is super quick & simple to do so don't stress!

If you need additional help with the setup process, be sure to check out my detailed blog post by clicking this link:

<https://fallontravels.com/blog/how-to-add-presets-to-lightroom-mobile-tutorial>

You can find my YouTube video on how to install presets in Lightroom mobile by clicking this link:

[youtu.be/hFbJxBYxLWE](https://youtu.be/hFbJxBYxLWE)

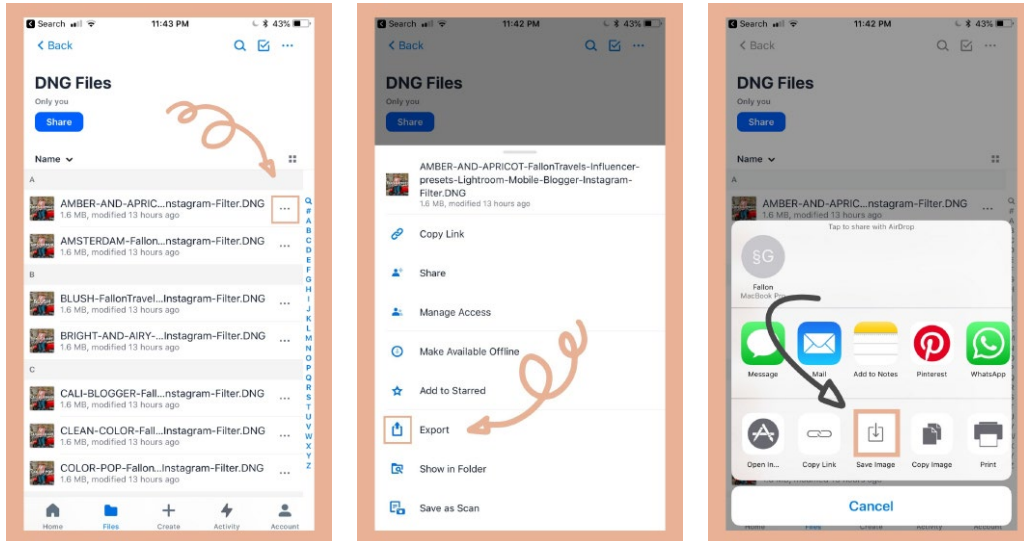
You will also find detailed instructions (with screenshots) in this PDF guide. However, feel free to reach out with any specific questions!

## 2. Save DNG Presets to Camera Roll

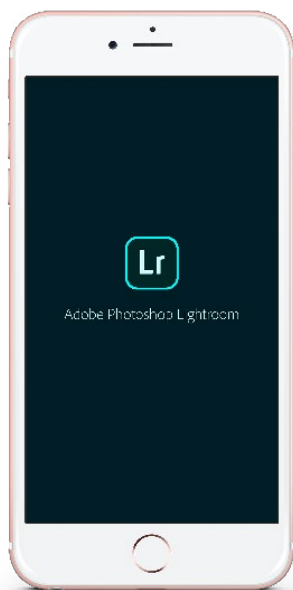
On the right of each DNG preset you're gonna see three dots.

Click on any one of the presets and then select Export.

Select the button that says Save Image.



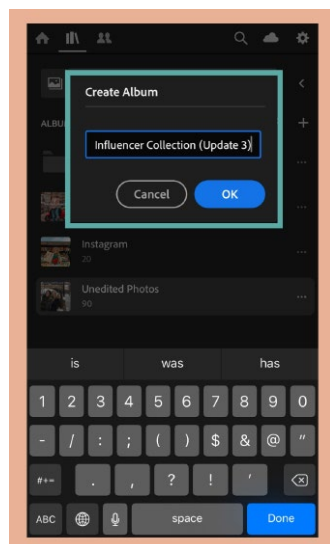
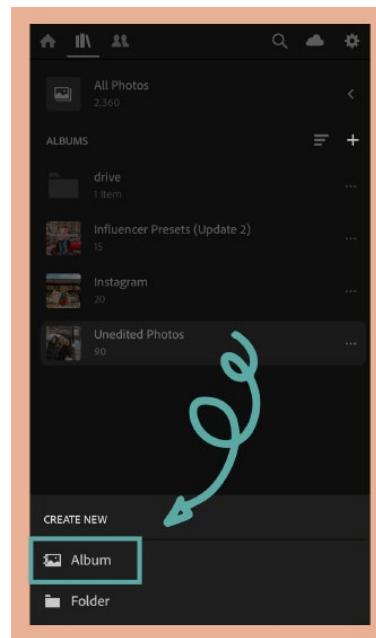
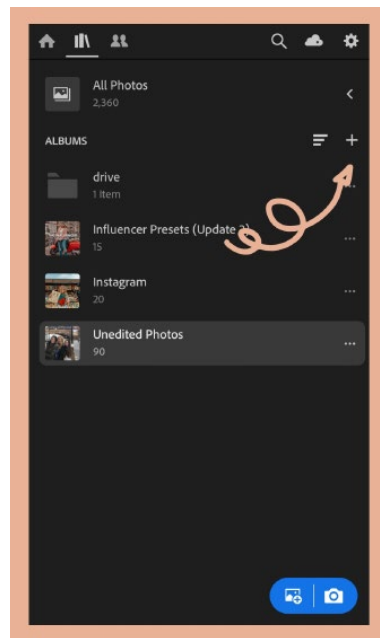
Save all of the DNG files to your camera roll



Make sure that you have each DNG file saved to your camera roll and then head on over to the Lightroom mobile app once you have them all saved.

### 3. Import Mobile Presets to Lightroom

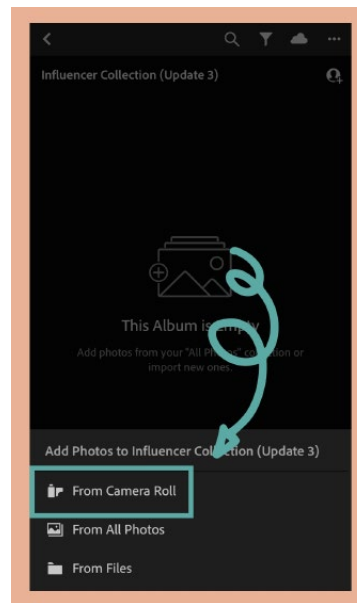
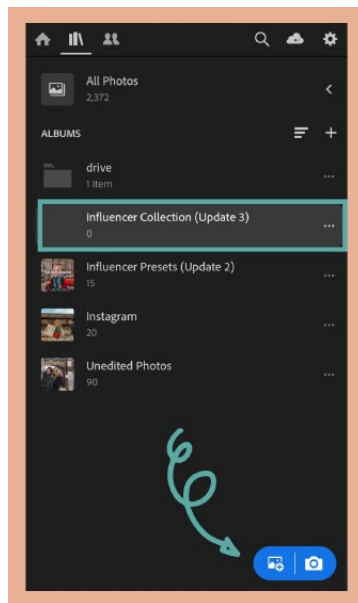
Once you're in the Lightroom mobile app you'll see an album section. Click the plus icon to the right of albums. You'll see a popup at the bottom of your screen that says Create New with Album and Folder as the options listed. Choose "Album".



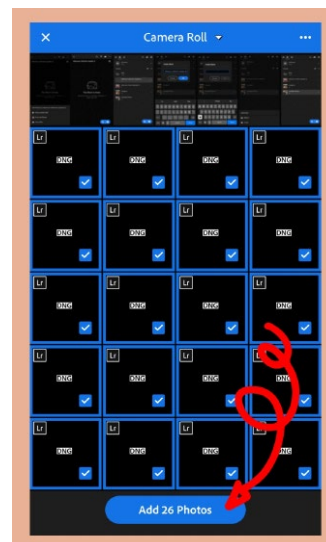
You'll see a new form field pop up on your screen that says Create Album. Type any name that you'll easily remember for your presets! Click OK.

Select the album you just created and you'll see two blue buttons at the bottom right hand corner of your screen. Click the one to the left.

You'll see an "Add Photos" section appear at the bottom of your screen with From Camera Roll, From All Photos and From Files as the options listed. Choose "From Camera Roll".



Click the Add Photos button at the bottom of your screen. Now these will import into the album.



## 4. Copy & Paste DNG Preset Settings

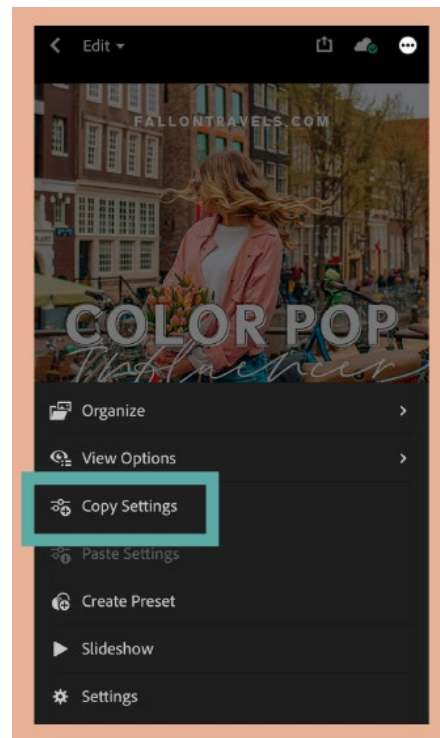
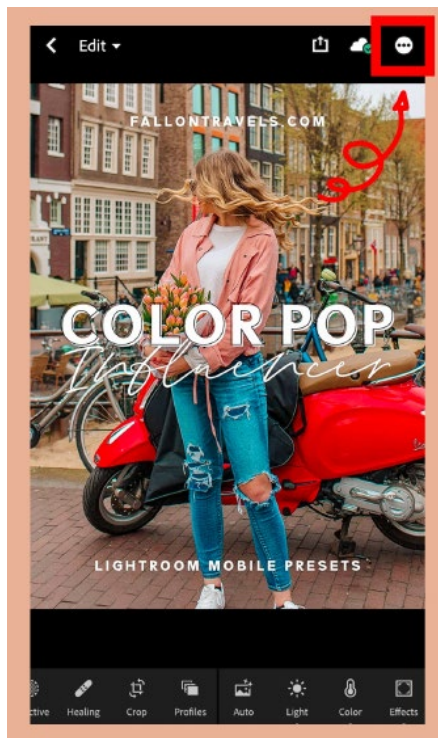
So you have a couple of options here.

The first one is to copy and paste the settings onto your photo.

If you don't want to copy & paste the settings each time, then skip to the "Save Presets to Lightroom Mobile" section.

The first thing you'll need to do is select any DNG file from the preset album, then click the **circle button** in the top right hand corner with three dots.

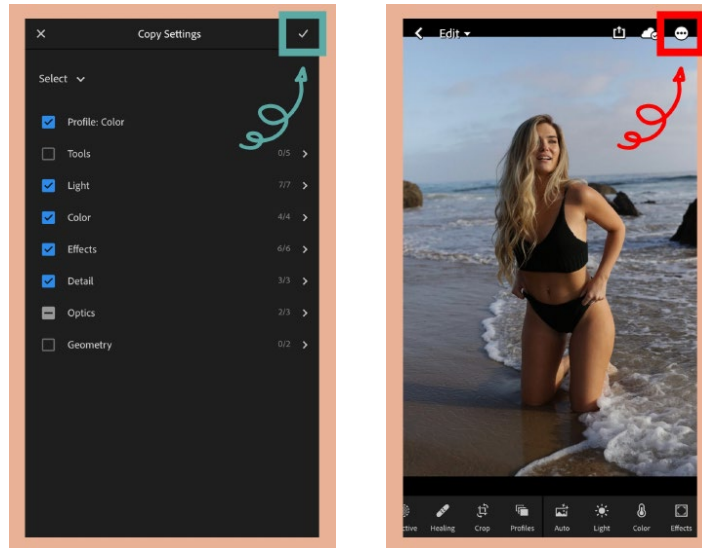
Select the button that says "Copy Settings".



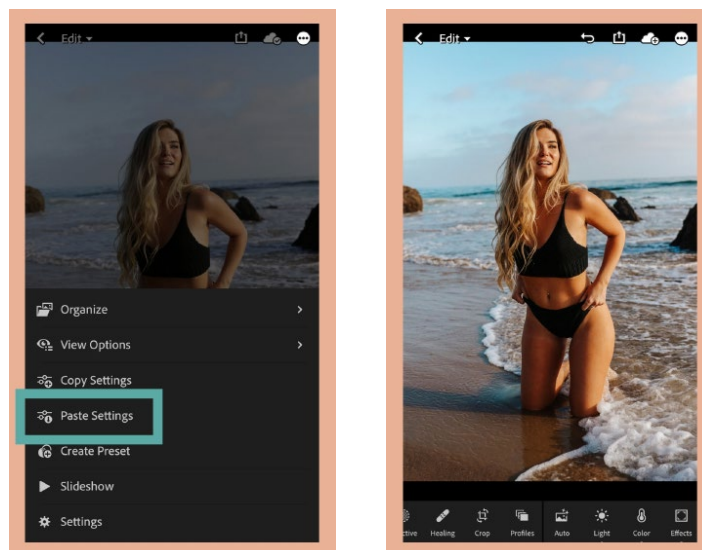
Click the checkmark in the top right-hand corner.

Go over to any photo that you'd like to edit with the preset.

Click the same circle button in the top right-hand corner.



You'll see the same dropdown from earlier. This time, you'll select, "Paste Settings".





## 5. Create/Save Preset in Preset Album

The second option is to create and save the preset in a new preset album.

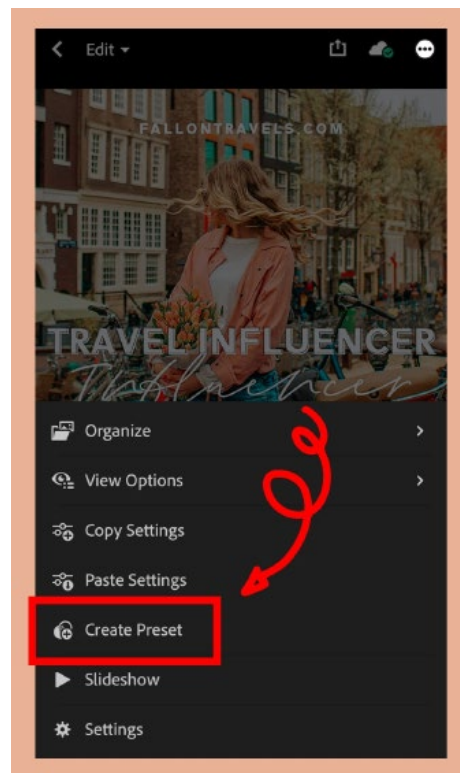
The option to save presets used to only be available to those with a paid Lightroom subscription but now it's available for the free version as well!

If you don't see the option, try updating Lightroom mobile or deleting and reinstalling the app.

So you'll first want to go to the preset album we created earlier. Then select any preset that you want to use to edit your image.

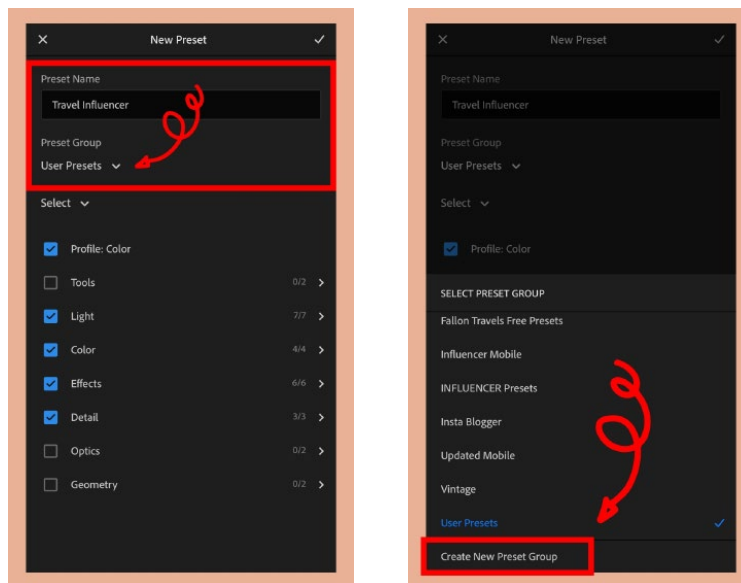
Select the same circle button with three dots in the top right-hand corner.

But this time you'll select the option that says "Create Preset".

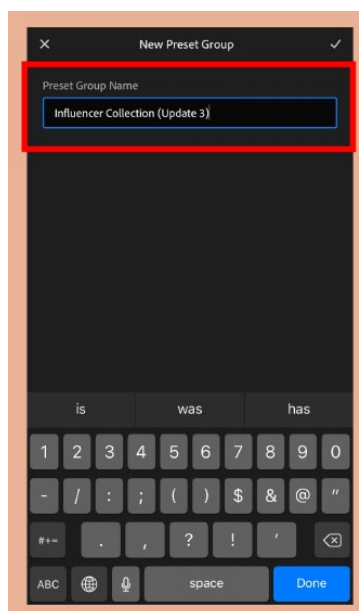


First type in a name for your preset.

You can then select a preset group that will hold all of your mobile presets. User presets will be selected as the default option. But if you want to create a new custom group, click the little dropdown option under Preset Group.



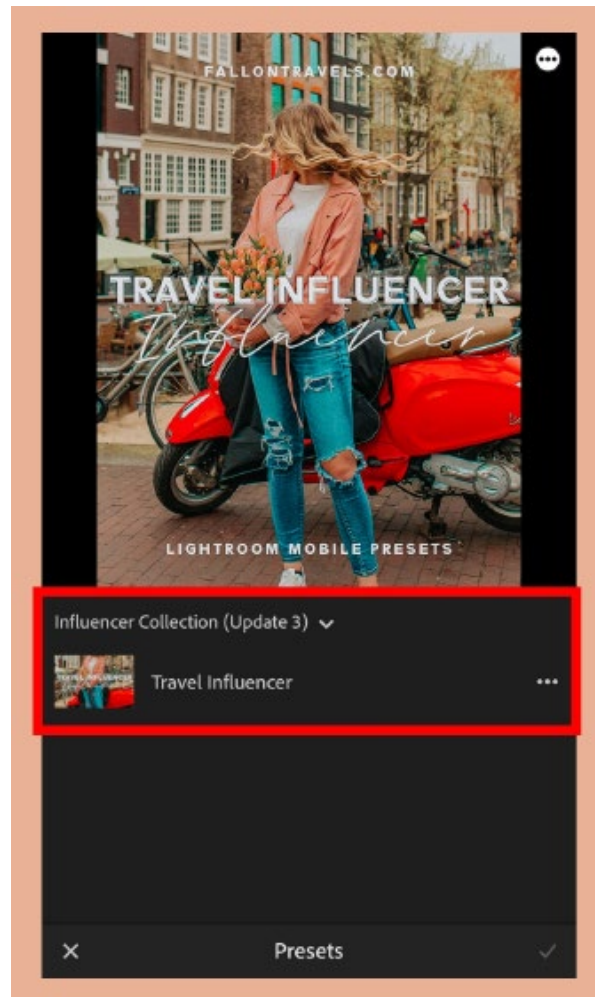
Type in a name for the preset group that you'll easily remember, then select the checkmark once you're finished.



## Make sure you save all of the DNG Presets

Your preset will now be saved to a custom preset group!

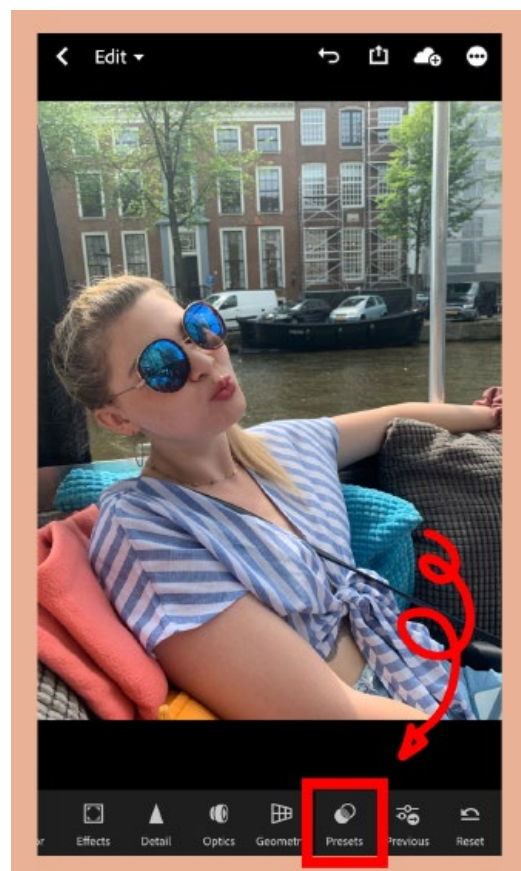
You'll wanna go back and do this for each one of the DNG presets until you have all of them saved to the same preset group!



## 6. Apply Mobile Preset to Photo

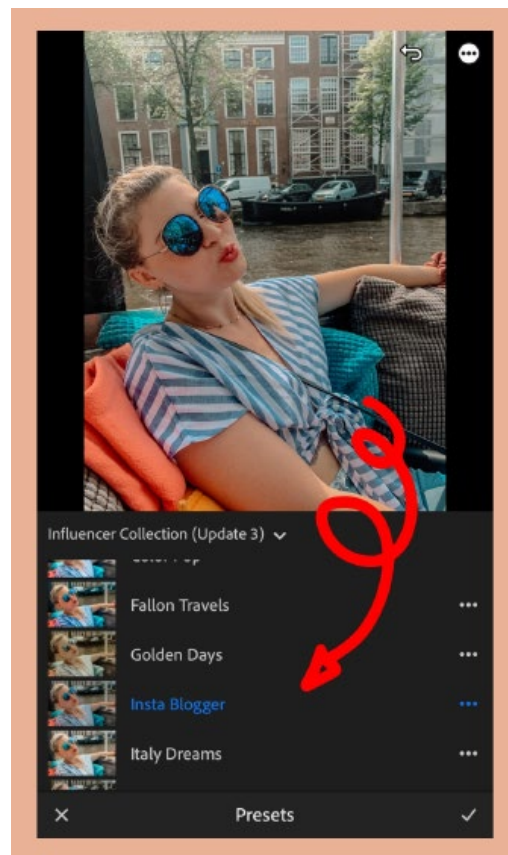
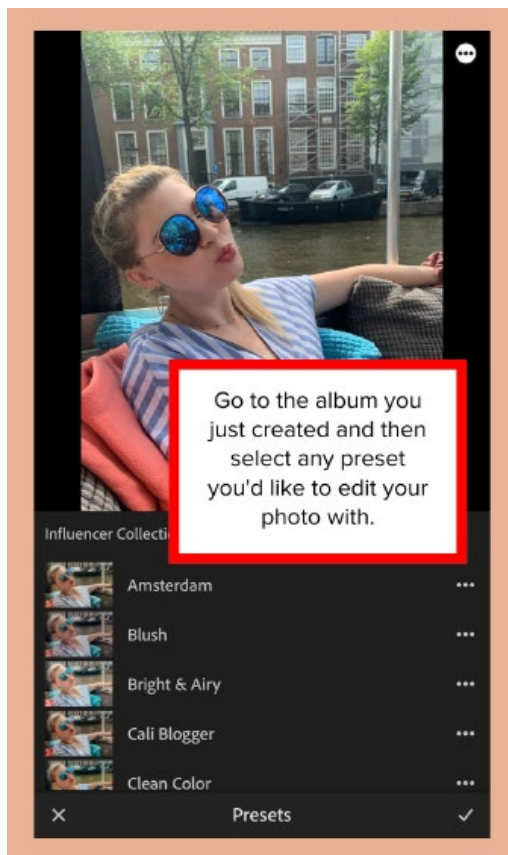
Make sure you have each of the DNG files saved to the preset group you just created.

You can now choose the photo you'd like to edit with your preset. Slide over to the right until you see the "Presets" tab.



Go to the preset album you just created and then click on whatever preset you'd like to edit your photos with!

Select that “one-click” mobile preset and your photo should now be lookin’ super fab for Instagram. ;)



# Lightroom Photo Editing

## PHOTO EDITING 101 FOR LIGHTROOM BEGINNERS

On the following pages, I have included a basic photo editing guide for those of you who are new to the Lightroom mobile app & need a few tips (or even for those who are more experienced in Lightroom but just want to brush up on skills!).

Below, you will find examples of each preset applied to the same JPEG image, along with it's title/style to help you in your editing process. Please note that you won't see all of the style differences in the samples below, as no one image is the same.

Feel free to reach out if you have any questions!





# HOW TO ADD PRESETS TO LIGHTROOM MOBILE CC

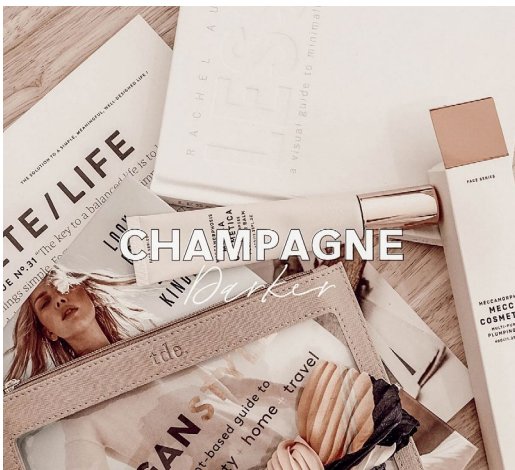
**Champagne: Original version**



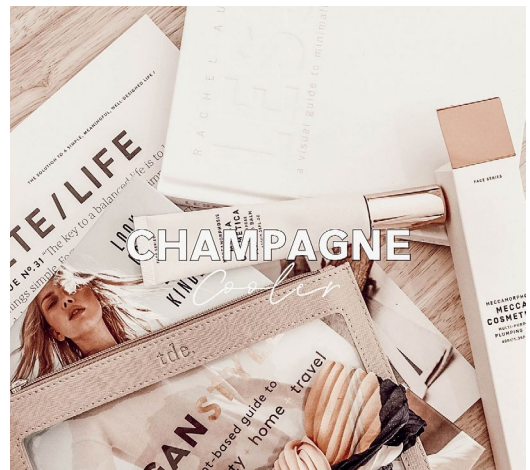
**Champagne: Brighter tones**



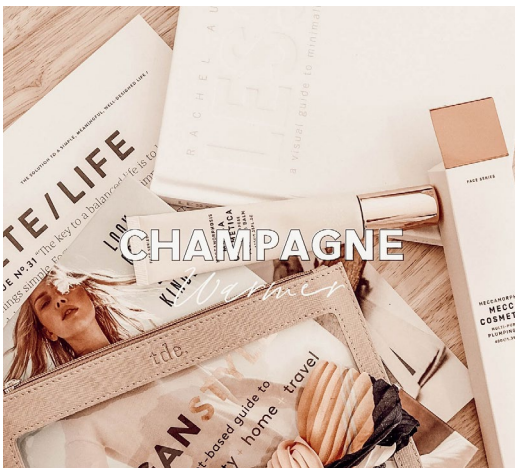
**Champagne: Darker edit**



**Champagne: Cooler tones**



**Champagne: Warmer tones**



# Photo Editing 101

## FOR LIGHTROOM BEGINNERS

Once installed, Lightroom presets can dramatically transform your images and simplify your overall photo editing process. With that being said, it's important to note the following:

- While Lightroom presets are a great starting point for photo editing, many (if not most) images WILL need additional processing after a preset is applied - it is very rare that you place a preset and it is ready for export.
- More often than not, the white balance or exposure of your image will need to be adjusted after applying a preset. Fortunately, this can be accomplished easily using the sliders in the Develop Module of Adobe Lightroom.
- In general, you will need to play around with the tools in Lightroom and find a happy medium for your edit!

Below, I've listed a few of my best Lightroom Workflow tips for making adjustments in Adobe Lightroom. I am going to be updating this guide with new information/ tips over the next few months, so please bear with me as I am updating my products! :)

### **White Balance- Temperature and Tint:**

Under the develop module, on the right-hand side of your screen, you will find the white balance sliders. These sliders include 'Temperature', and 'Tint'.

The temperature slider will adjust your photo to be warmer or cooler, whereas the tint slider will adjust your photo to have a pink or green tint. Temperature and tint will usually work in tandem, so you will need to play around with these sliders until you find a happy medium for your edit. These sliders can create a very dramatic effect on the outcome of your photo edit, and you may need to customize your presets for a specific set of photos if your lighting is either too cool or too warm.



# Photo Editing 101

## FOR LIGHTROOM BEGINNERS

**Exposure:** The exposure slider lets you add/subtract light to/from an image. Some photographers don't like to mess with the exposure, as adjustments can be made more precisely by moving the 'whites', 'blacks', 'highlights' and 'shadows' sliders to focus on specific areas of an image (instead of making one large change with the exposure slider). However, because I tend to shoot my photos slightly under-exposed, I typically will increase my exposure slider just a tad to correct for the under-exposed image. The reason I shoot slightly under-exposed is because over-exposed images are much more difficult to fix in post-processing. Increasing the exposure slider somewhere between +0.2 to +0.35 will typically work for me, but it all depends on the image I'm working with!

**Highlights:** Highlights bring down the exposure of the lightest areas of an image without affecting the entirety of it. I almost always take my highlights pretty far down (-60 to -100), which will bring back more of the photo detail (i.e. detail in the sky/clouds that may have been otherwise lost).

**Shadows:** The shadow slider lets you make the darkest areas darker or lighter to either get rid of unwanted detail, or to make the detail more visible. I will typically take my shadows nearly all the way up (depending on the image): somewhere between +60 to +100.

**Whites:** The white slider allows you to create pure white areas in your image in order to naturalize your image further. My whites will range depend on the photo.. but will usually end up somewhere in the middle.

**Blacks:** Similarly, the black slider allows you to create pure black areas in your image to naturalize your image further. I usually bring my blacks down a bit to bring back some contrast in the image. Somewhere around -60.