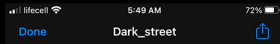


HOW TO INSTALL DNG LIGHTROOM PRESETS ON YOUR MOBILE DEVICE

1



Dark_street

2,9 MB

31 files

[Preview Content](#)

-Download file Dark_street.zip

-Download the DNG file to your phone

If ZIP file cannot be opened on your phone you're going to have to take the ZIP folder with Dark_tones presets and unzip it on computer.

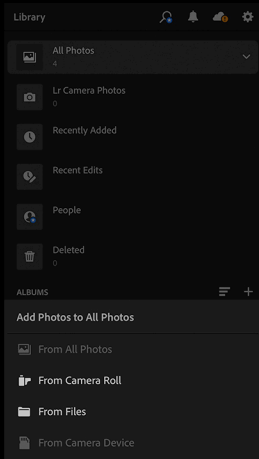
Once you do so, you can airdrop the files to yourself!

Or Just transfer the DNG file to your phone with your preferred file hosting service.

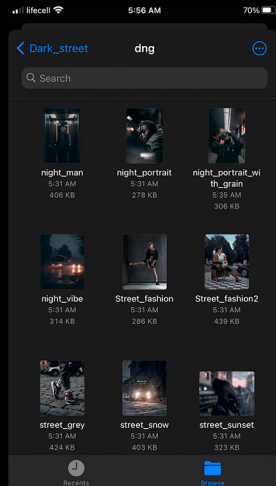


HOW TO INSTALL DNG LIGHTROOM PRESETS ON YOUR MOBILE DEVICE

2



- Upload the DNG file as a photo in Lightroom Mobile App
- Add the DNG file like you normally would with an image on Lightroom Mobile.



HOW TO INSTALL DNG LIGHTROOM PRESETS ON YOUR MOBILE DEVICE

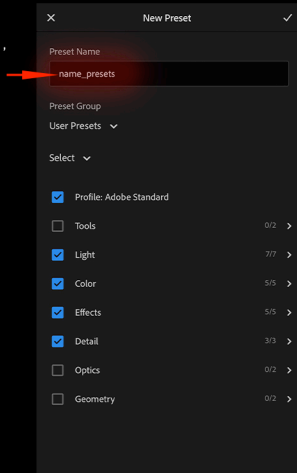
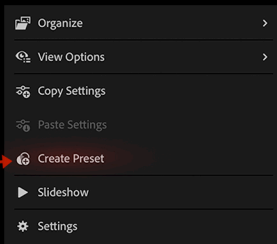
3



-Open the photo and in the Presets tab, select the top 3 dots and select:

Create Preset

-Give your preset any name you want.



HOW TO INSTALL DNG LIGHTROOM PRESETS ON YOUR MOBILE DEVICE

4

-Use your new preset
and apply it to a new photo
To do this, open up your photo
and in the Presets tab,
select your new preset.

As no photo is the same, I highly
recommend making adjustments
to Exposure and Temp.

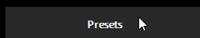
LIGHTROOM CC

STEP 1:

IN LIGHTROOM CC, PRESS E TO OPEN THE EDIT PANEL.

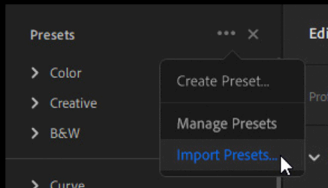
STEP 2:

NEAR THE BOTTOM OF THE INTERFACE, CLICK ON PRESETS.



STEP 3:

CLICK ON THE PANEL MENU AND SELECT IMPORT PRESETS.



STEP 4:

NAVIGATE TO THE FOLDER WHERE YOU'VE

EXTRACTED THE FILES.

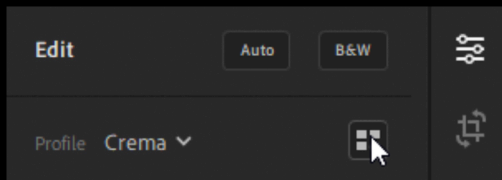
LOAD THE LIGHTROOM CC\ DARK_STREET.ZIP FILE

STEP 5:

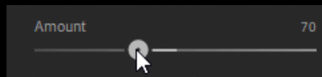
EXPAND THE LRTEMPLATE FOLDER AND SELECT A PRESETS.

STEP 6:

TO ADJUST THE OPACITY, CLICK ON THE "BROWSE PROFILES" BUTTON IN THE EDIT PANEL.



ADJUST THE AMOUNT SLIDER LOCATED BELOW THE SELECTED PROFILE.



SYNC TO LIGHTROOM IOS/ANDROID/WEB

AFTER LOADING THE PRESETS TO LIGHTROOM CC,

THEY WILL AUTOMATICALLY SYNC TO LIGHTROOM

ON YOUR MOBILE DEVICE. YOU MUST HAVE AN ACTIVE

CREATIVE CLOUD SUBSCRIPTION.

LIGHTROOM CLASSIC CC

STEP 1:

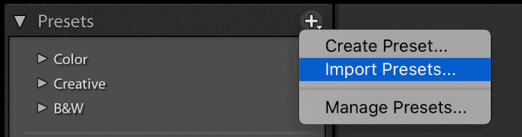
IN LIGHTROOM CLASSIC CC, PRESS CTRL+ALT+2

(MACS: CMD+OPTION+2) TO GO TO THE DEVELOP MODULE.

STEP 2:

ON THE LEFT SIDE, OPEN THE PRESETS PANEL.

CLICK ON THE + BUTTON THEN CHOOSE IMPORT PRESETS.



STEP 3:

NAVIGATE TO THE FOLDER

WHERE YOU'VE EXTRACTED THE FILES.

LOAD THE LIGHTROOM CLASSIC CC\ DARK_STREET.ZIP FILE

STEP 4:

EXPAND THE LRTEMPLATE FOLDER AND SELECT A PRESET.

