

VECTORIZE

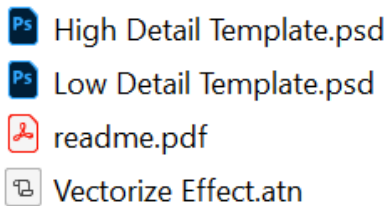
Photoshop Action

Note :

The effect works best for images with sizes 2000 x 3000 px wide (for high detail effect), and 1000x1500px (for low detail effect) at 300dpi. You may use the included templates to start with these settings. Just make sure to flatten the image after dragging the file to be edited into the template canvas.

How to Install

- 1) Unzip the file to your chosen destination folder.
Inside the zipped file, you should be able to find these :



- 2) There are three ways to load the actions in Photoshop.

Option 1 :

After unzipping, copy the Vectorize Effect.atn file to where you can find the default Photoshop action scripts in your drive.

For windows, the path should be similar to this :

C:\Program Files\Adobe\<Adobe Photoshop version>\Presets\Actions

For Mac, it should be something like :

/Applications/<Photoshop Version>\Presets\Actions

Option 2 :

Double-click on the .atn file. It should be automatically load when you launch Photoshop.

Option 3 :

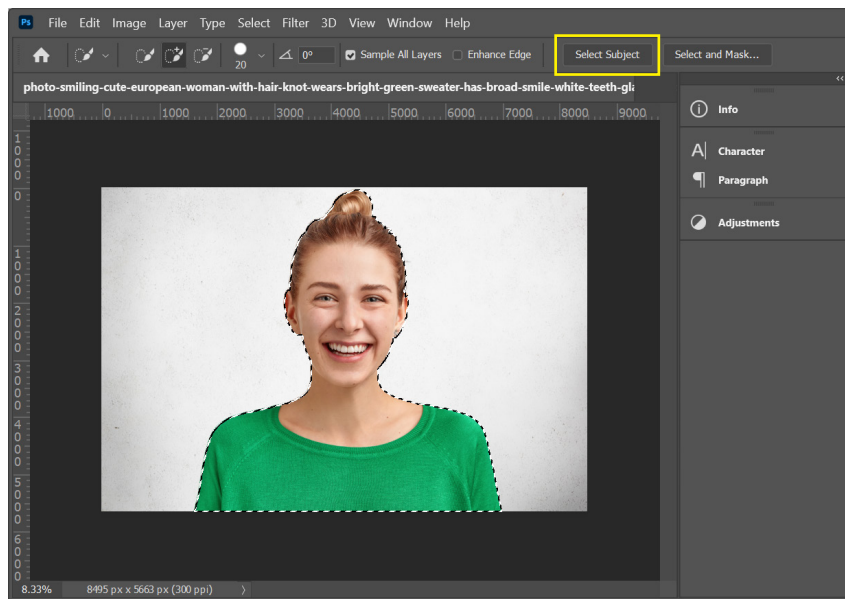
Launch Photoshop and load the action from the Actions Panel. You can launch the panel by clicking on Windows>Action on the menu or simply pressing Alt+F9.

How to Use :

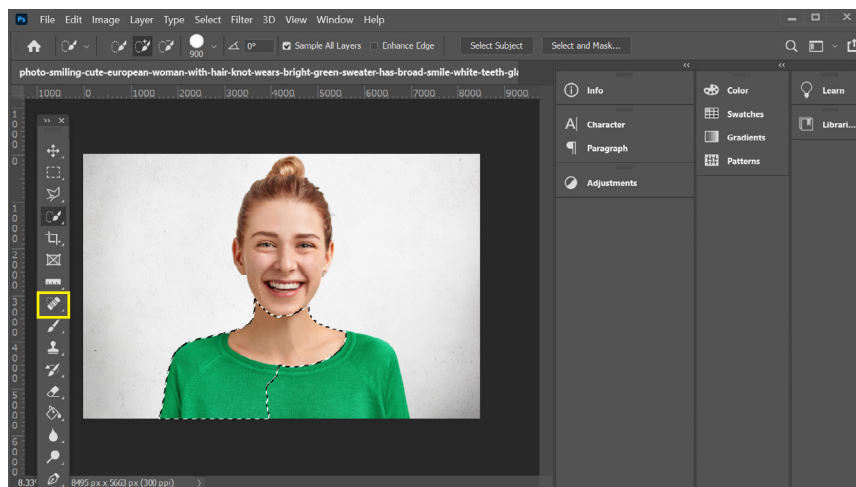
1) Select your Image

There are 2 recommended ways of selecting your image.

You can press “W” and use “Select Subject” to instantly select your subject

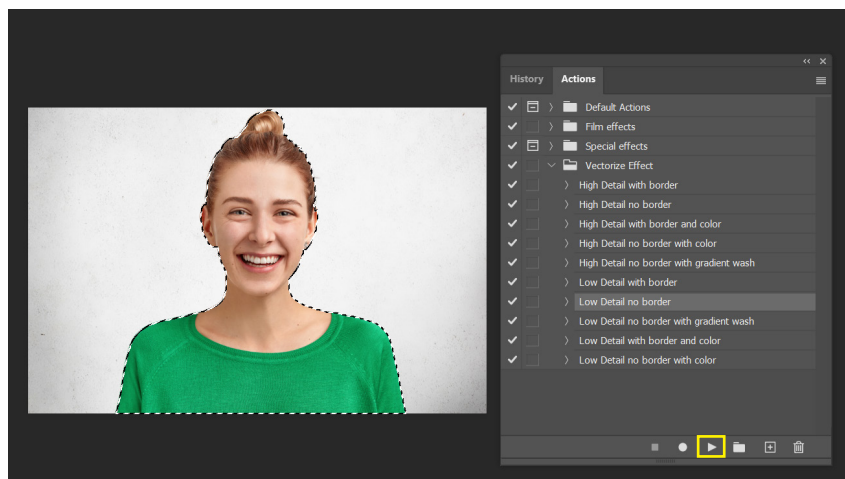


or you can use Quick Selection Tool “W” and brush over your subject to select it



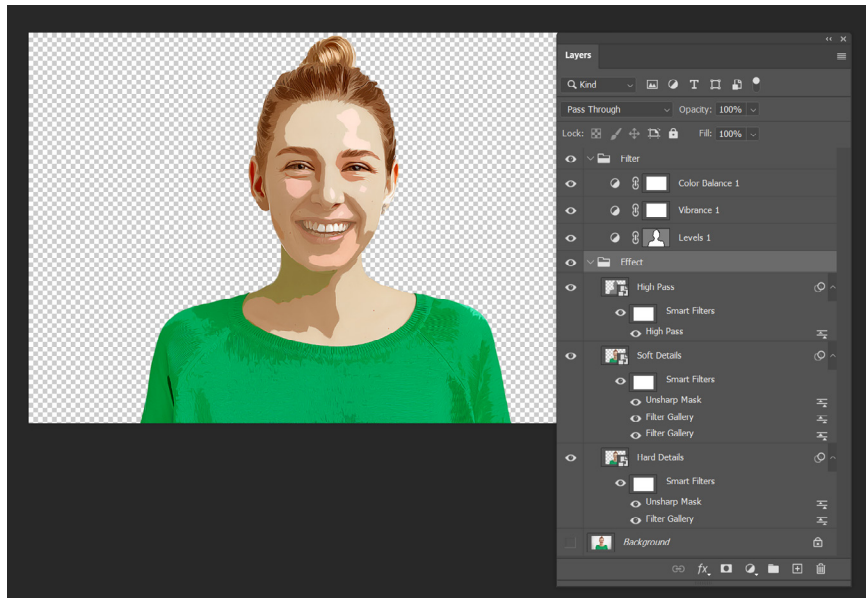
2) Now the hardest part (kidding!)

From the Actions Panel, choose the effect you want to execute, click play, and wait.



3) Voila!

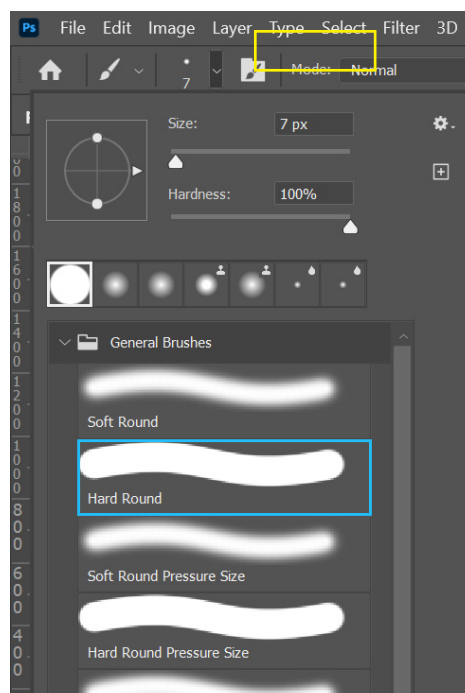
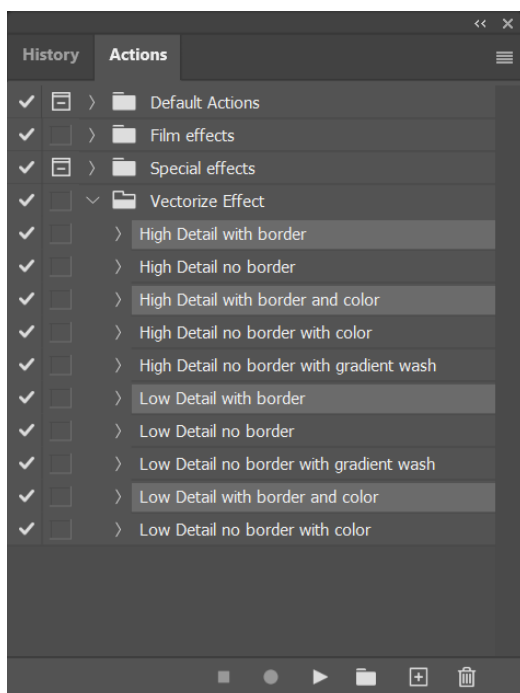
You now have your vectorized image!



The effects applied have all been layered, so you can adjust accordingly to fine-tune your desired output.

4) Additional Notes

For effect variations that will add a border, you will need to set your brush style and width before playing the action. Recommended brush style is Hard Round. For Low Detail effect variations, a stroke width of 5-7px is recommended. For High Detail variations, a stroke width of 10-12px. You are free to play however with whichever brush style to use and have fun with the results!



In case of errors :

You may check the following :

- Make sure the image is in JPG format, RGB, 8 bits/channel, and flattened.
- Check your Photoshop version.
The plugin is compatible for Adobe Photoshop CC 2017, 2018, 2019, and 2020.
- Make sure you have a selected area. If you are going to use the effect on the entire image, drag a marquee around the entire canvas.
- Please delete all created effects if trying one action after another.
The image needs to be reset before trying another effect to avoid errors.

If in any case you have experienced errors when using the action for reasons aside from those stated above, you may drop me a message at my envato [profile](#) page.

Thank you for purchasing my product. Enjoy! 😊