

In this action convert your image to Scrape Art Photoshop Action.

This action has been tested and works photoshop CS6, CC, CC 2015, CC 2015.5, CC 2017, CC 2018, CC 2019 + version.

INSTRUCTIONS

1. Your Photoshop document must be in RGB colour mode. To check this, go to the menu **Image -> Mode -> RGB Colour** check the right screenshot. Check in Figure 1.
2. Your Photoshop document must be setup in **8bits/Channel**. To check this, to the menu **Image -> Mode -> 8bits/Channel** check the right screenshot. Check in Figure 1.
3. **Press B** to select the Brush tool. On the top toolbar, make sure **Mode** is **Normal**, and both **Opacity** and **Flow** values are set to **100%**. Check in Figure 3
4. On the Layers panel, click on the menu icon on the top-right corner. Go to **Panel Options...**, and make sure that the **Use Default Masks on Fill Layers** and **Add "copy" to Copied Layers and Groups** are checked. Check in Figure 2
5. You are running the **English** version of Photoshop.
6. Avoid using small resolution images. For the best results, use Photos between **2000px - 3500px high/wide and 72-300 dpi resolution**.

If you have a lower resolution image, go to "Image" > "Image Size..." and change them to the specified dimensions. After the action has finished rendering, you can always reduce to your original size.

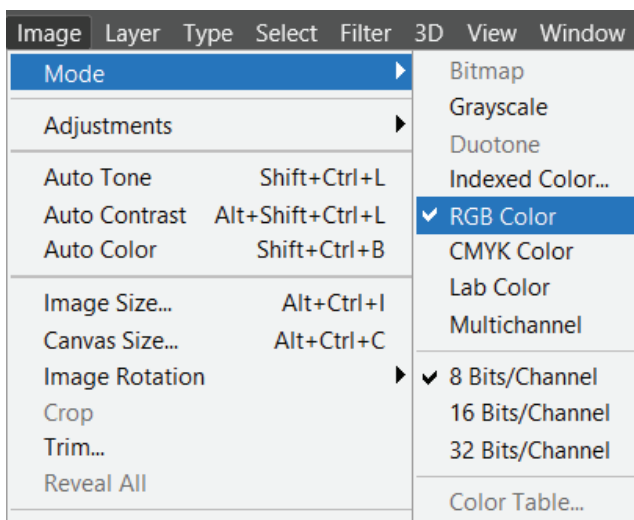


Figure 1

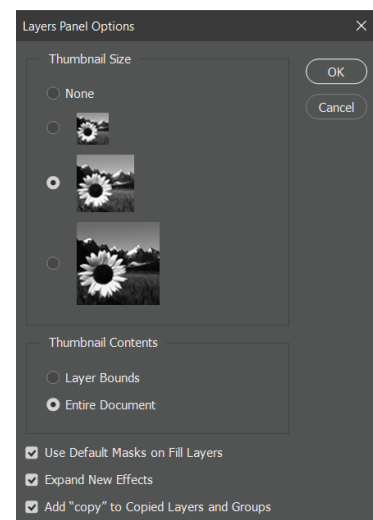


Figure 2



Figure 3

HOW TO USE ACTION:

1. Inside Photoshop, go to the **File > Open....**
2. Inside the Open window, navigate to the main Scrape Art Photoshop Action folder which you downloaded.
3. Select the following files – “**Scrape Art Photoshop Action.**”, “**Scrape_Art_Patterns**” and “**Scrape_Art_Brushes**”. Check in Figure 4
4. Click **Open** to load the files in **Photoshop**.

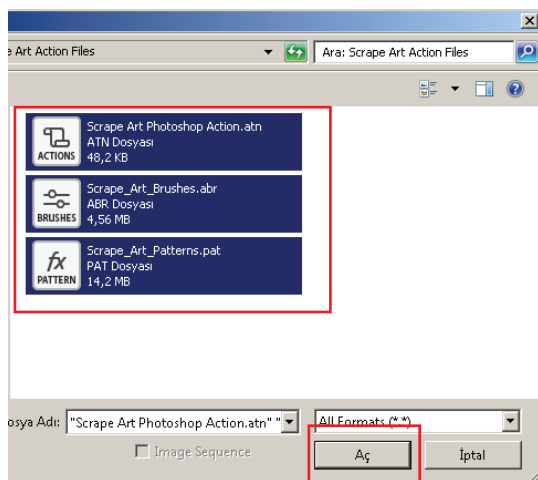


Figure 4

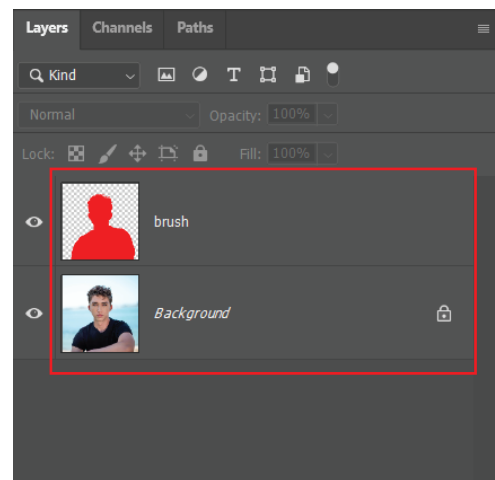


Figure 5

5. Open a photo to work with.
6. Leave the photo layer locked and set as the **Background**. In case it is not, go to **Layer > New > Background from Layer** to convert it into a Background locked layer
7. Create a new layer above the background layer called **brush**. Must be all in LOWERCASE. Check in Figure 5
8. With the **brush** layer selected, brush/trace the areas of your photo that you want to apply the effect to. Check in Figure 5
9. **Press B** to select the Brush tool. On the top toolbar, make sure **Mode** is **Normal**, and both **Opacity** and **Flow** values are set to **100%**.
10. Now **play** the action.

PLEASE, DON'T FORGET TO RATE THIS PRODUCT

Thanks...