

HOW TO INSTALL PRESETS FOR ADOBE LIGHTROOM

MAC

1. Please Download and unzip the presets file and open the resulting folder.
2. In this folder you will find the presets, they are the files with the .lrtemplate extension.
3. Open Lightroom
4. In top menu bar choose Lightroom>Preferences.
5. There will be a new window that appears. Select the Presets tab.
6. Click on the button labeled "Show Lightroom Presets Folder."
7. In this new Finder window open the 'Lightroom' folder, and then open the 'Develop Presets' folder. Copy and Paste the presets folder into this location.
8. Restart Lightroom, the presets can be found in the Presets section on the left in the Develop module.

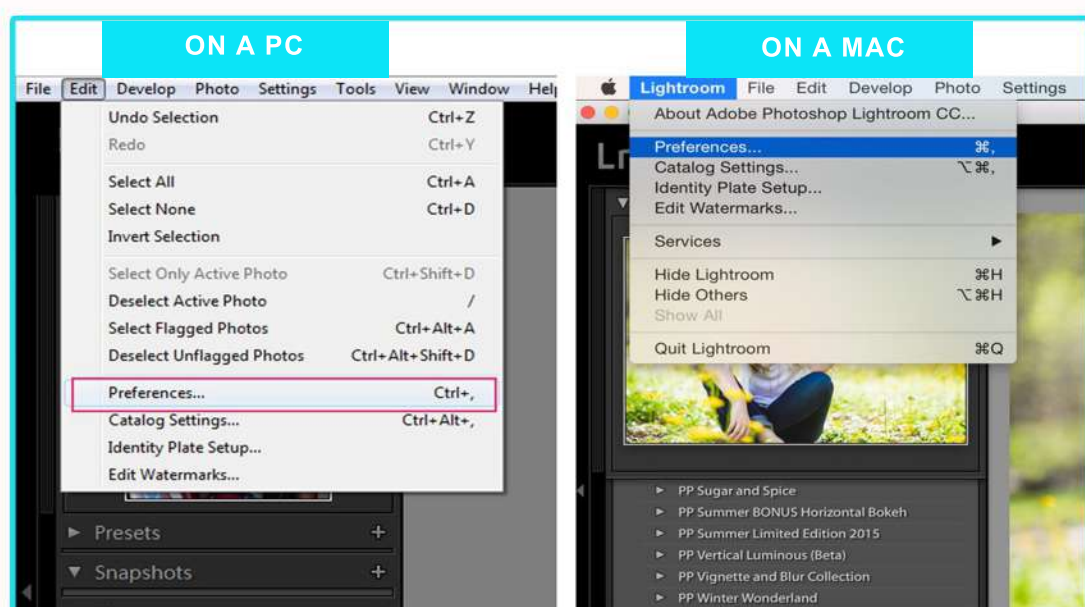
WINDOWS

1. Please Download and unzip the presets file and open the resulting folder.
2. In this folder you will find the presets, they are the files with the .lrtemplate extension.
3. Open Lightroom
4. In the top menu bar choose Edit>Preferences
5. There will be a new window that appears. Select the Presets tab.
6. Click on the button labeled "Show Lightroom Presets Folder."
7. In the new Explorer window that appears open the 'Lightroom' folder, and then open the 'Develop Presets' folder. Copy and Paste the presets folder into this location.
8. Restart Lightroom, the presets can be found in the Presets section on the left in the Develop module.

The file path for the necessary location of the .lrtemplate Presets folder:

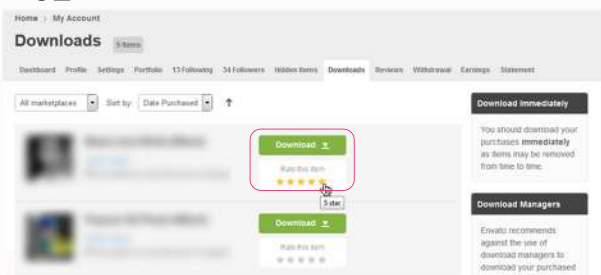
Mac: Macintosh HD\Users\<username>\Library\Application Support\Adobe\Lightroom\Develop Presets

Windows: Computer\[C:]\Users\<username>\AppData\Roaming\Adobe\Lightroom\Develop Presets

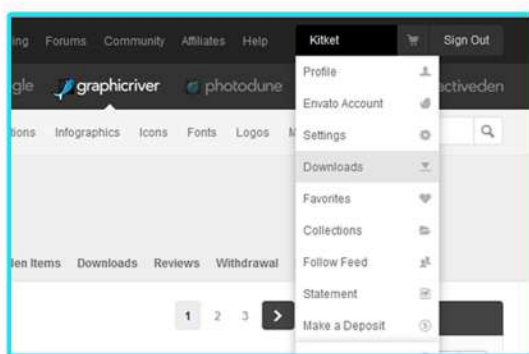


HOW TO GIVE RATE ?

02



01



I'm so glad you visited my shop!

Thank you for buying!!

I hope you are satisfied with your purchase!

If you have any questions you are free to contact me any time! :)

Thanks for your purchasing. Don't forget to rate it.