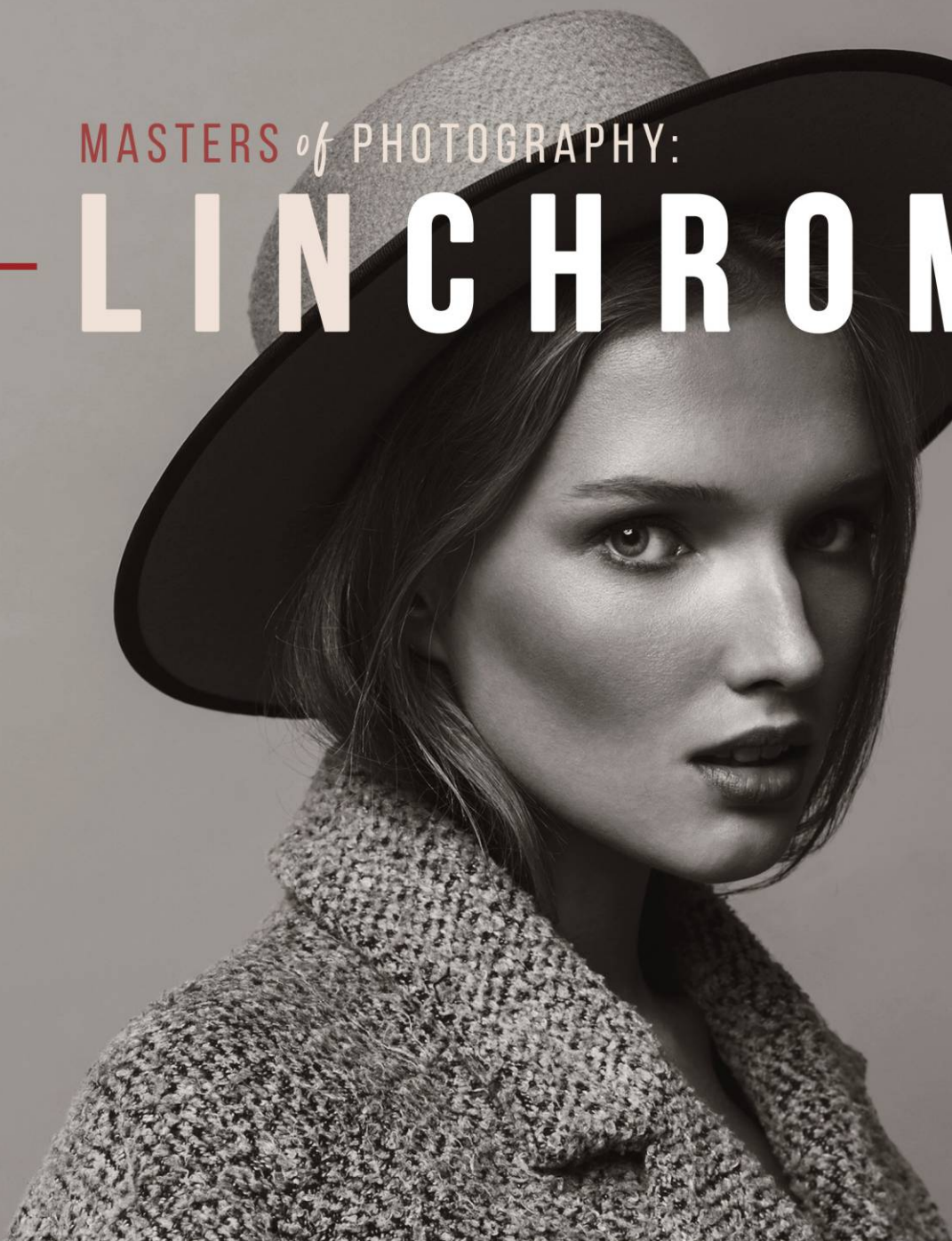


MASTERS *of* PHOTOGRAPHY:

# LINCHROME



## DOCUMENTATION

[WWW.PRESETRAIN.COM](http://WWW.PRESETRAIN.COM)

[PRESETRAIN@GMAIL.COM](mailto:PRESETRAIN@GMAIL.COM)

 PRESETRAIN





# INSTALLATION & USE

## INSTALLATION FOR MAC & WINDOWS



1. Download action(s).
  2. Locate and unpack the zip archive.
  3. Open Photoshop.
  4. Look for the Actions window (open it if it's not present).
  5. Click the small arrow button located in the top-right of the Actions window.
  6. Select Load Actions.
  7. Select the .atn file(s) from location where you unpacked your zip archive to.
  8. Repeat for other .atn file(s) when necessary (if actions came in a bundle).
  9. Your action(s) will load into the Photoshop Actions window.
- Done!

## USAGE GUIDE

1. Open you image (JPEG or converted RAW supported).
2. Make sure it is flattened (no layers, to avoid confusion) and in RGB mode.
3. Please consider retouching image (removing defects and making other technical corrections) before applying the action.
4. Select your action by clicking on it and press Play button (little arrow) on the bottom of the Actions panel.
5. You're done! A new group of adjustment layers is created above your original image. You can modify the settings to better fit your style and taste.

## LICENSE & RESTRICTIONS

You may use this action to process your personal or commercial images with no limitations. NO sharing, re-distribution, re-sale or modification (rather then for personal use) of original action files! All rights reserved.

Please feel free to contact me for questions and custom orders:  
[presetrain@gmail.com](mailto:presetrain@gmail.com)