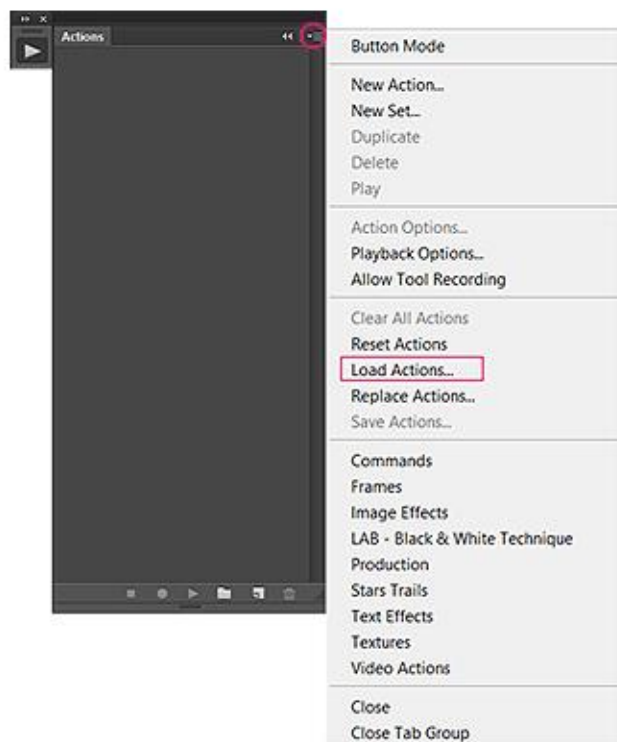
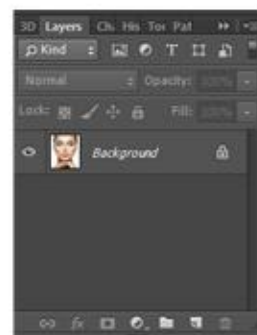


## HOW TO INSTALL ACTION:

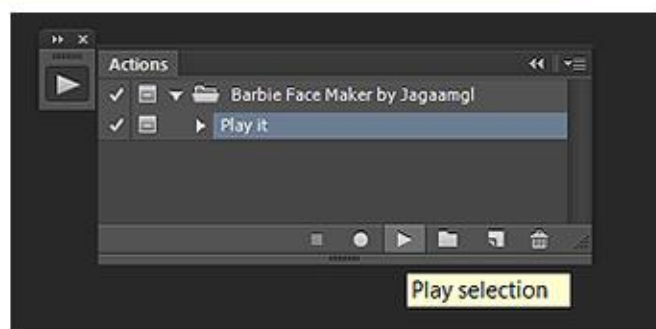
Window / Actions / Load Actions... / -Barbie face Maker.atn



## ORIGINAL IMAGE PREVIEW

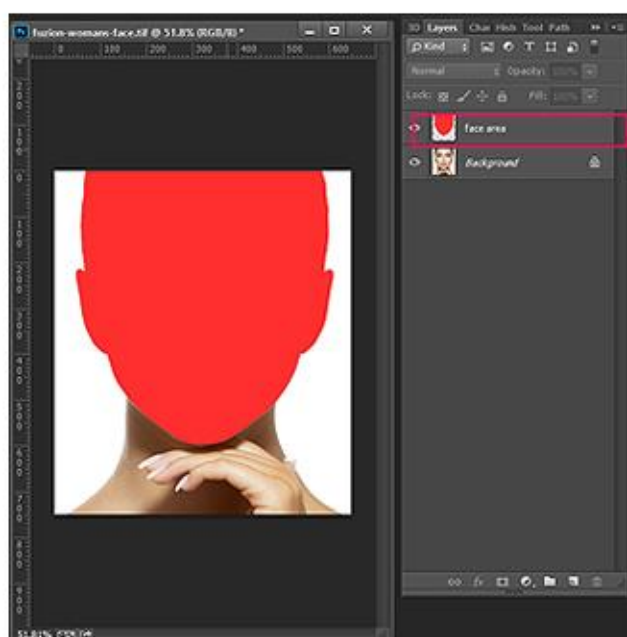


## PLAY ACTION



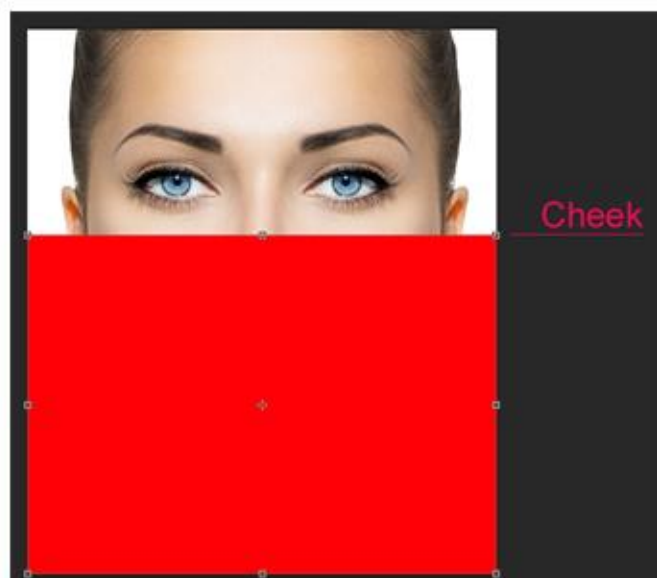
## PAINT ALL AROUND FACE

Use brush tool or pen tool



## PLAY ACTION

Set the same time the height of the cheek red box /area layer/



## MAKE EYE, LIPS, NOSE:

Window / Actions / Load Actions... / -Barbie face Maker.atn

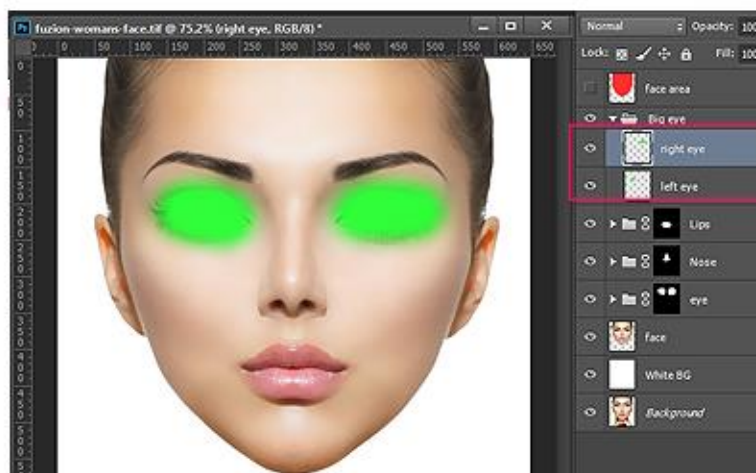


1. Paint all around eye in mask of "eye" folder.
2. Paint all around nose in mask of "nose" folder.
3. Paint all around lips in mask of "Lips" folder.



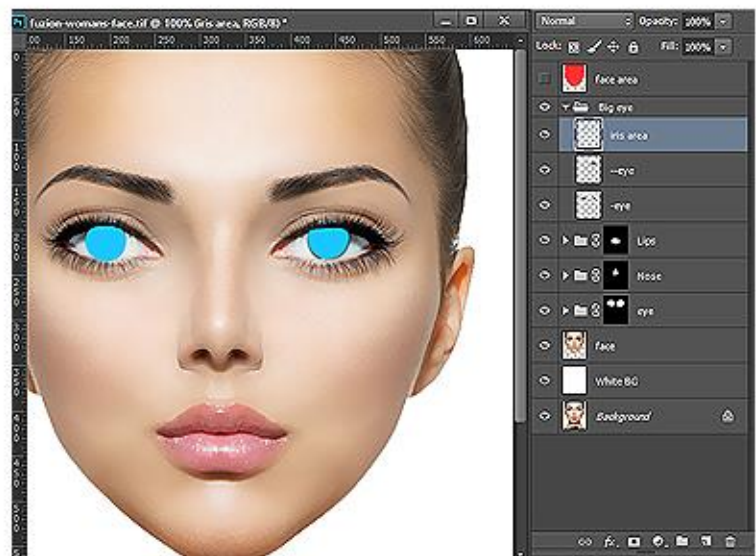
## MAKE BIG EYE:

1. Paint all around right eye in "right eye" layer.
2. Paint all around left eye in "left eye" layer.



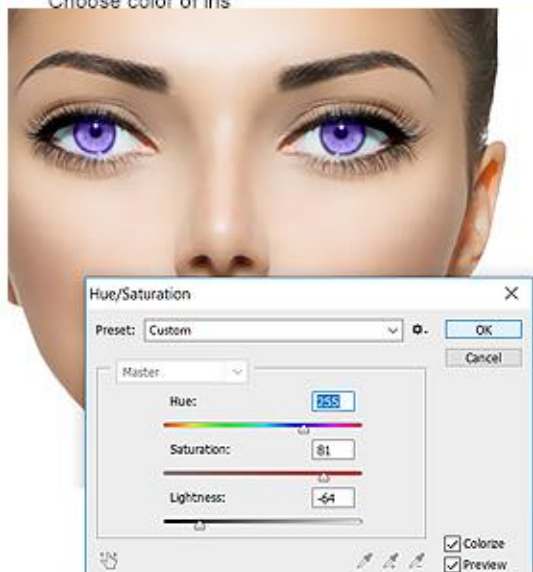
## MAKE COLORFUL IRIS:

Paint over the iris in "iris area" layer.  
Click play button.

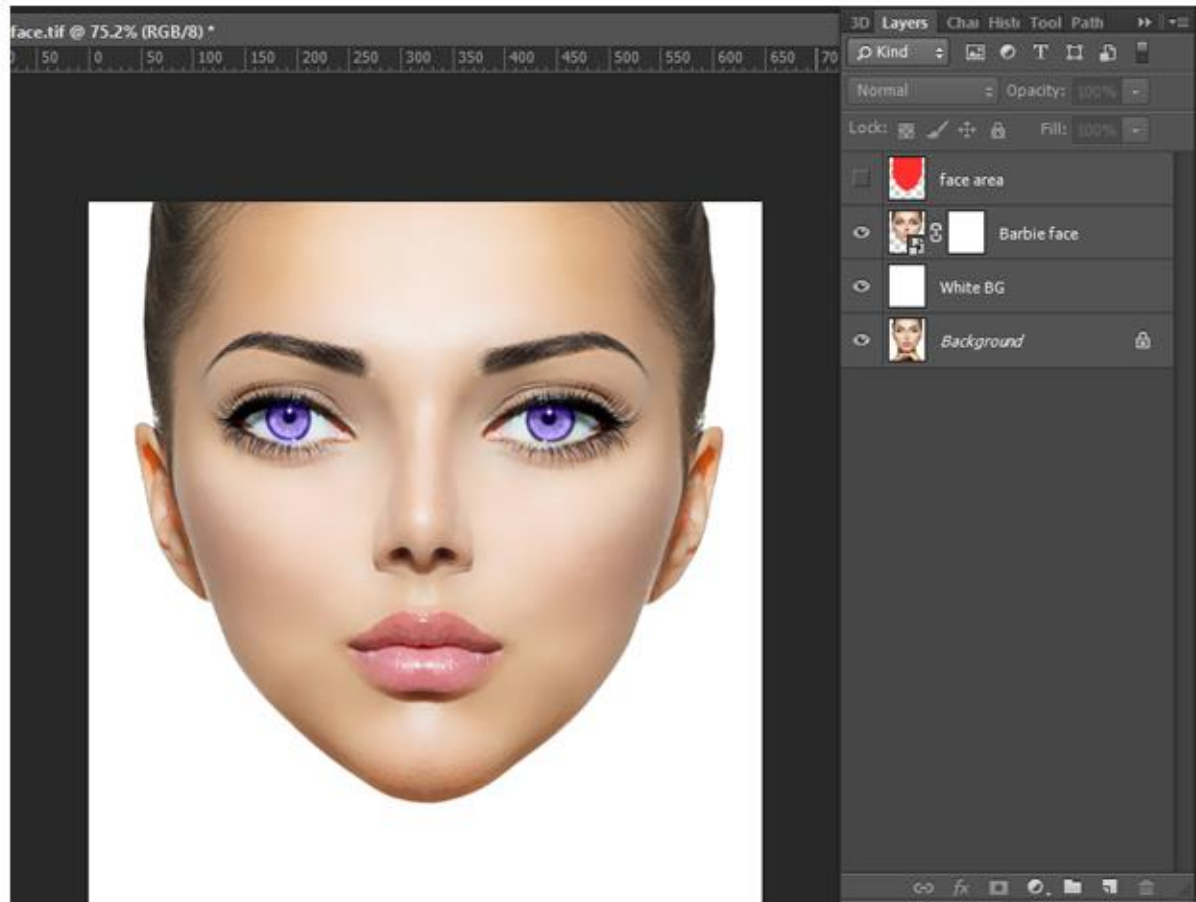


## IRIS COLOR

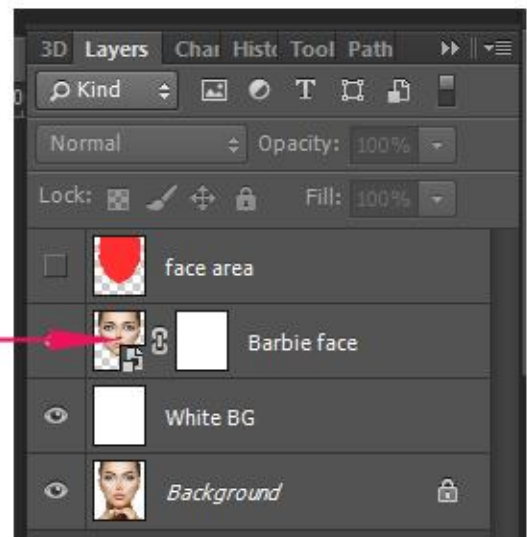
Choose color of iris



RESULT



IF YOU WANT TO EDIT, YOU HAVE TO  
DOUBLE CLICK 'BARBIE FACE' SMART  
OBJECT LAYER



Vedio Tutorial Link

<https://www.youtube.com/watch?v=UPwdcy3x9aI>