



For Photoshop
Any language, PC/Mac



CC2015.5, CC2017, CC2018, CC2019, CC2020
or newer versions of Photoshop



Hi there,

Thank you for purchasing **VECTOREAL – REAL VECTOR PAINTER & CONVERTER PS Add-on**.

This instructions guide contains important setup steps on how to run the action.

All steps which are absolutely necessary to run the action are marked with 

IMPORTANT - PLEASE WATCH DEMONSTRATION VIDEO BELOW

The video below will demonstrate how to use the action and how you can customize the look of your final composition after the action has finished. The video covers some important techniques that you will want to use after the action has finished.



[CLICK HERE TO WATCH THE HELP GUIDE VIDEO](https://youtu.be/29aJuasUyXI)

<https://youtu.be/29aJuasUyXI>

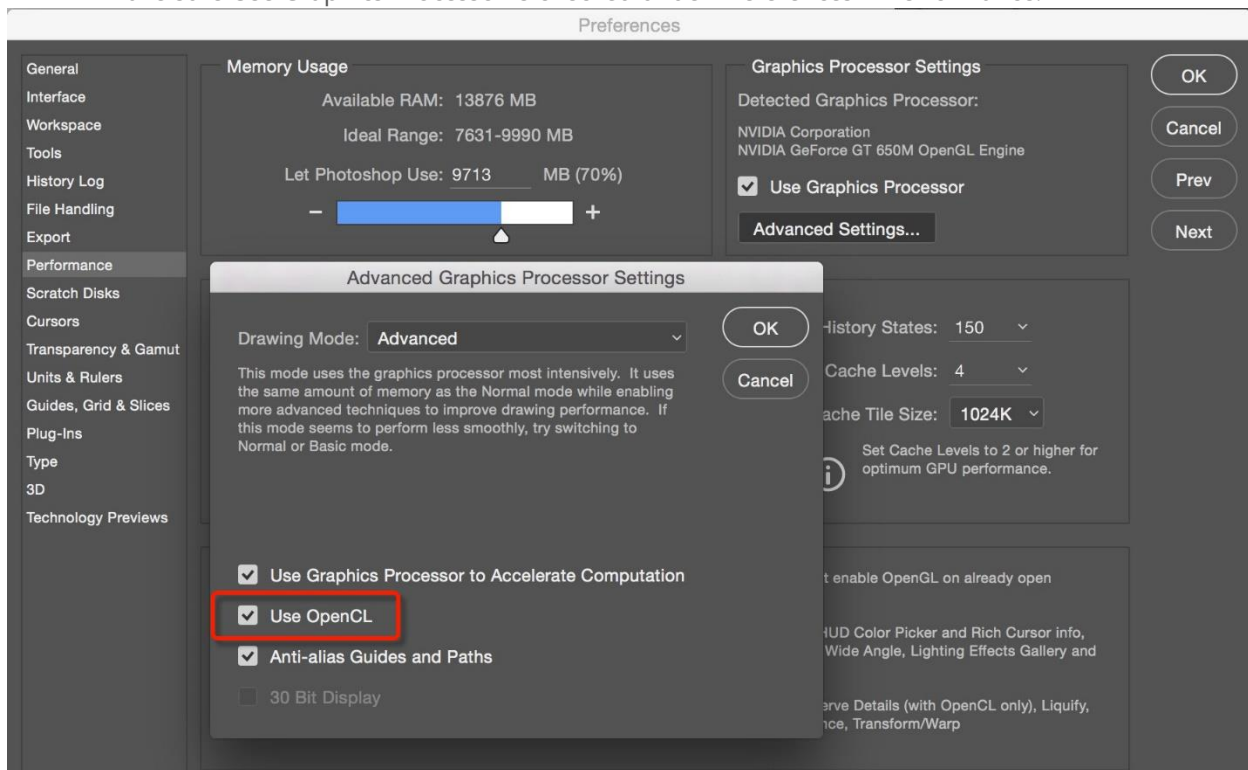
This action has been tested and working on Photoshop (**any language, PC/Mac**) **CC 2015.5, CC 2017, CC 2018, CC 2019, CC 2020** or any newer version.

IMPORTANT - This action requires OIL PAINT FILTER!

This action requires OIL PAINT FILTER! Please make sure Oil Paint Filter is available and enabled in your version of Photoshop under **Filter > Stylize**.

If Oil Paint is grayed out for you, try these steps:

- Make sure Photoshop is up-to-date.
- Make sure that your document is RGB. Oil Paint won't work on color spaces other than RGB (e.g. CMYK, Lab, etc.).
- If you're on Windows, make sure you're running a 64-bit OS with the 64-bit version of Photoshop. OpenCL requires 64-bit.
- Make sure Use Graphics Processor is checked under Preferences > Performance.



- Make sure that your video card driver is up to date with the latest from the vendor website.

Note: If your video card does not support OpenCL v1.1 or higher, you may need to purchase an upgraded video card that supports OpenCL v1.1 or higher to gain access to the Oil Paint filter.

Information about your graphics card can be found in Photoshop's Help > System Info dialog.

On computers with **AMD graphics processors running Mac OS X 10.11 and later**, you can leverage Apple's Metal graphics acceleration framework for use with the Oil Paint filter. Follow these steps:

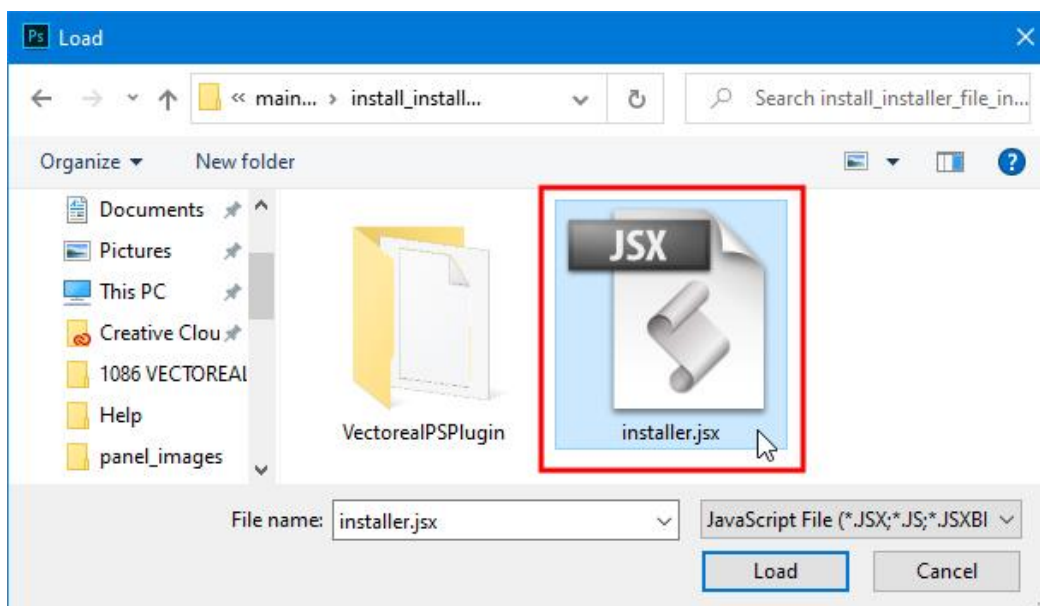
1. Select Preferences > Performance.
2. Ensure that Use Graphics Processor is selected.
3. Open the Advanced Graphics Processor Settings dialog.
4. Select Use Native Operating System GPU Acceleration.

How to Install

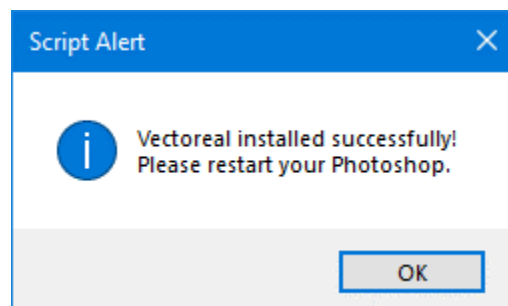
In the below steps we will be installing the main files of the add-on into Photoshop.

INSTALL USING INSTALLER.JSX FILE

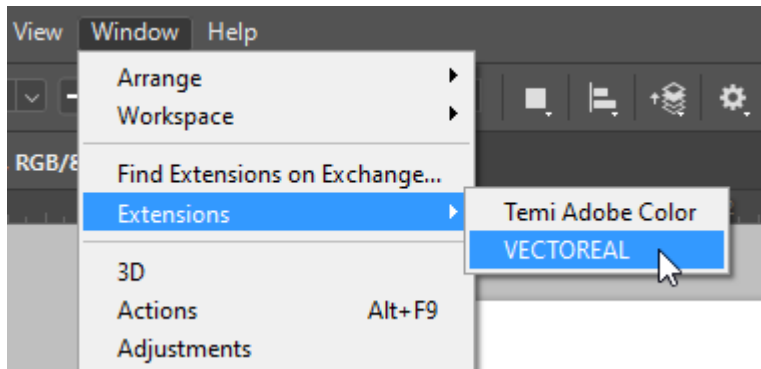
1. Inside Photoshop, go to **File > Scripts > Browse....**
2. Inside the Load window, navigate to the main **Vectoreal** folder which you downloaded.
3. Select the **installer.jsx** file.
4. Click **Load** to install the plugin file in **Photoshop**.



5. You will get a **prompt message** that VECTOREAL has been loaded successfully.
6. Select **OK** and please **restart Photoshop**.



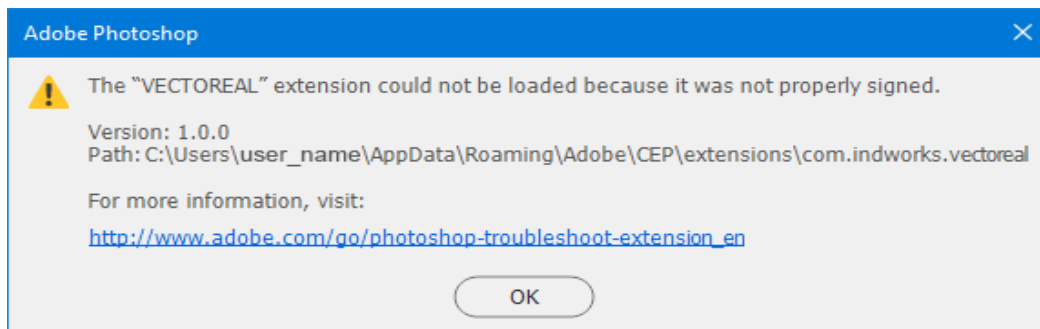
7. As Photoshop reopens, go to **Window > Extensions > VECTOREAL** to load the plugin.



IMPORTANT - PLEASE CHECK

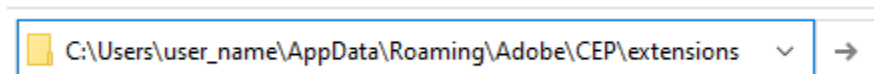
You must not modify or change any content inside the "VectorealPSPlugin" folder!

Please make sure the contents inside this folder remains untouched. Otherwise, **you might get an improperly signed error.**

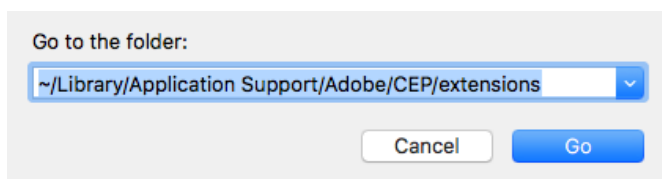


In that case, go to "**C:\Users\user_name\AppData\Roaming\Adobe\CEP\extensions**" for **Windows** or "**~/Library/Application Support/Adobe/CEP/extensions**" for **Mac**, and **delete** the "**com.indworks.vectoreal**" folder.

Then again, **re-install the plugin** afresh.



(for Windows)



(for Mac)

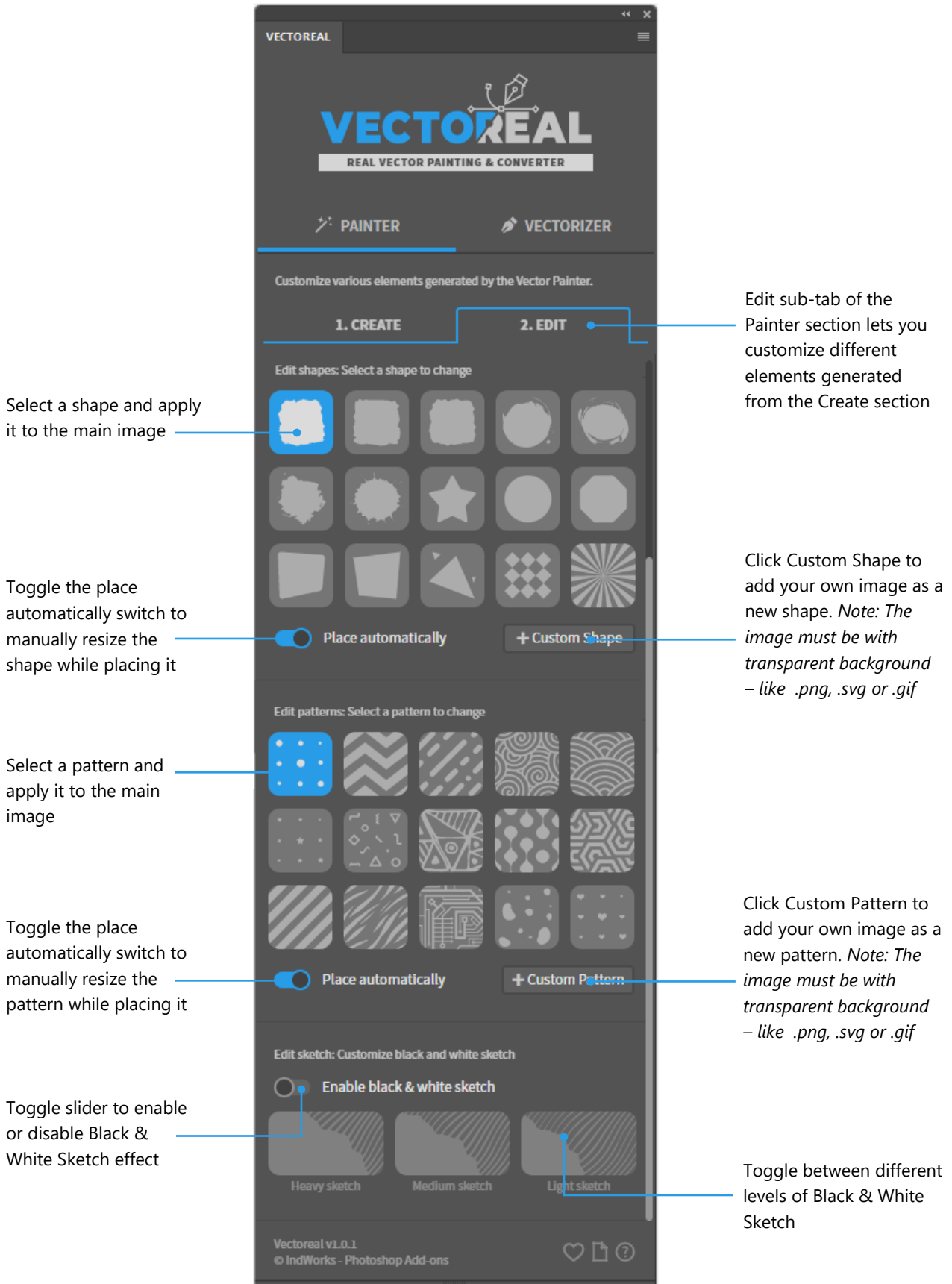
A Quick Overview

Let's browse through the different features of this plugin.

THE PAINTER SECTION

The **Painter section** of the **Vectorreal** plugin will convert your photos into cool vector-styled artworks.





THE VECTORIZER SECTION

The **Vectorizer section** will transform any of your images into real scalable vector shapes. It can be an image prepared by the Painter section of the plugin, or your previously created logo or clip-arts.

The screenshot shows the VECTOREAL Vectorizer section interface. The interface is dark-themed with blue accents. At the top, there's a header with the VECTOREAL logo and the text 'REAL VECTOR PAINTING & CONVERTER'. Below this, there are two tabs: 'PAINTER' and 'VECTORIZER'. The 'VECTORIZER' tab is selected. Below the tabs, there's a 'PRO' badge and a text box stating: 'This Vectorizer tool works with any image. Even if you have not transformed the image with Vectoreal Vector Painter!'. The main section is titled 'Vectorizer: Select a raster layer and run Vectorizer'. It contains several settings: 'Optimize Image size' (a toggle switch), 'Select pre-defined settings' (a dropdown menu set to 'Default'), and 'Advanced settings control' which includes 'Color Levels' (a slider set to 16), 'Reduce Noise' (a slider set to 3), and 'Smooth Paths' (a slider set to 3). Below these settings is a large blue button labeled 'Run Vectorizer!'. At the bottom, there's an 'Export' section titled 'Export: Select export format for vector file' with two buttons: 'Export SVG' and 'Export EPS'. The footer shows 'Vectoreal v1.0.1' and '© IndWorks - Photoshop Add-ons'.

The Vectorizer tab to access the Vector converter section

Updates images to 300 ppi resolution and 3500px along the shorter side

Set the number of colors in the vectorized image

Smoothes or softens image to remove any artifacts and noise

Smoothes paths and creates more streamlined shapes

Select a pre-defined preset to quickly set the vectorization parameters. Available options are – Default, Clip Art, 1-color Logo, Text Logo & Photos

You can also adjust the vectorizer parameters manually for greater control

Click to run the Vectorizer and convert your image into real scalable vector shapes

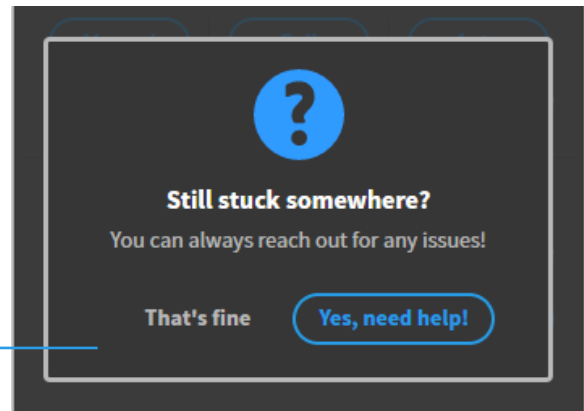
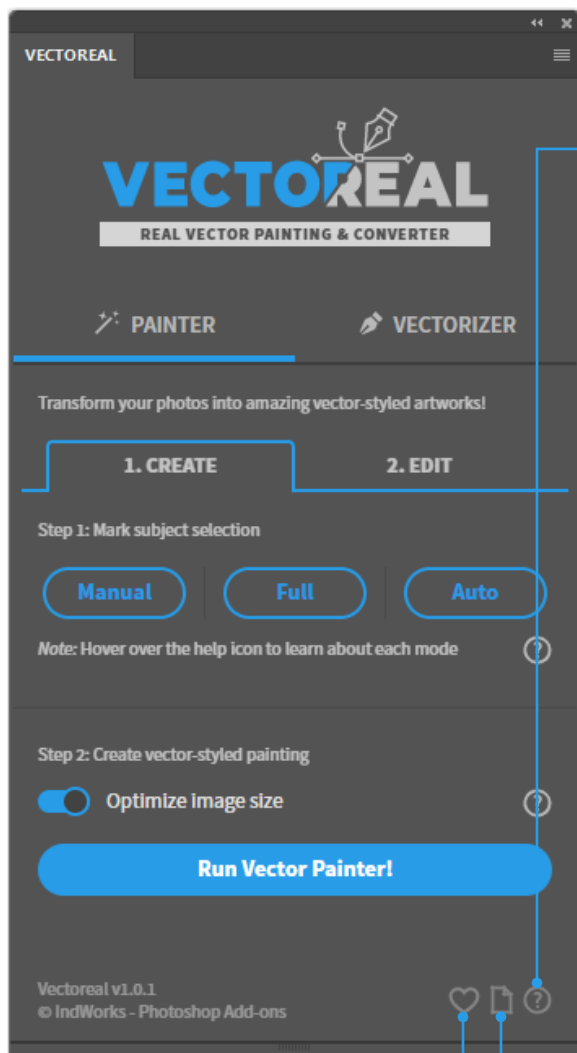
Remove any raster layer during the export

Export as a .svg file

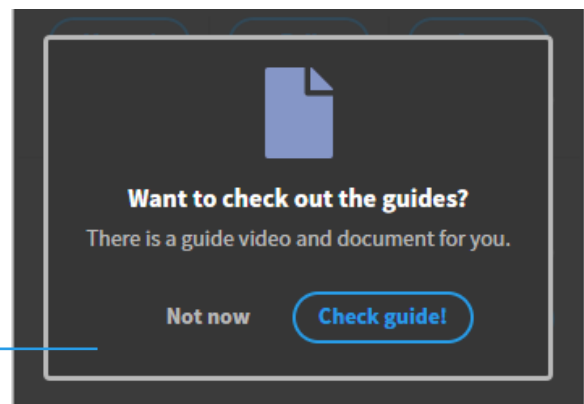
Export as a .eps file

HELP & CONTACT SECTION

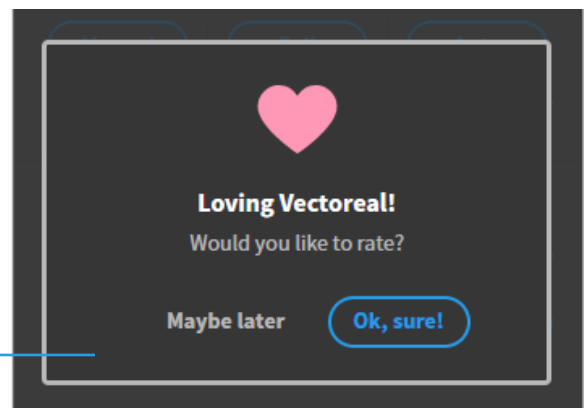
The **Help & Contact** section of the panel will quickly let you check out the guides or directly contact in case of any issues.



Quickly contact via email clicking on the Help icon



Select the Guide icon to check out help video and documentation guides



A rating will be really appreciated if you are loving Vectoreal!

How to Use

A QUICK RUN-DOWN OF THE IMPORTANT STEPS

1. Install the Vectoreal plugin.
2. Open an image to work with.

Note: Now you can continue to #3 if you plan to run the Vector Painter and convert your image into a vector-styled artwork or jump straight to #8 to vectorize your image into vector shapes if you already have a ready-to vectorize logo or clip-art image.

3. Select the subject area with any of the provided methods.
4. Run the Vector Painter to transform your image!
5. Edit shapes, patterns or sketch effect as you like.
6. Customize colors of the vector layers by double-clicking on them.
7. Select a raster layer if plan on vectorizing.
8. Set the Vectorizer parameters manually or select from a pre-defined preset.
9. Run the Vectorizer to convert your image!
10. Export your vector image as required.

Facing any Issues

If you need any help with the plugin, please **send an email to indworks.gfx@gmail.com**, with the error screenshot.

Will be happy to help you out.
Thank you for your support.

IndWorks