

POP ART

PHOTOSHOP ACTION

For Photoshop
Any language, PC/Mac




CS4, CS5, CS6, CC, CC2014, CC2015, CC2017, CC2018, CC2019, CC2020
or newer versions of Photoshop



Hi there,

Thank you for purchasing **POP ART PS Add-on**.

This instructions guide contains important setup steps on how to run the action.
All steps which are absolutely necessary to run the action are marked with 

IMPORTANT - PLEASE WATCH DEMONSTRATION VIDEO BELOW

The video below will demonstrate how to use the action and how you can customize the look of your final composition after the action has finished. The video covers some important techniques that you will want to use after the action has finished.

[CLICK HERE TO WATCH THE HELP GUIDE VIDEO](https://youtu.be/IA5ftkSqEGk)

<https://youtu.be/IA5ftkSqEGk>

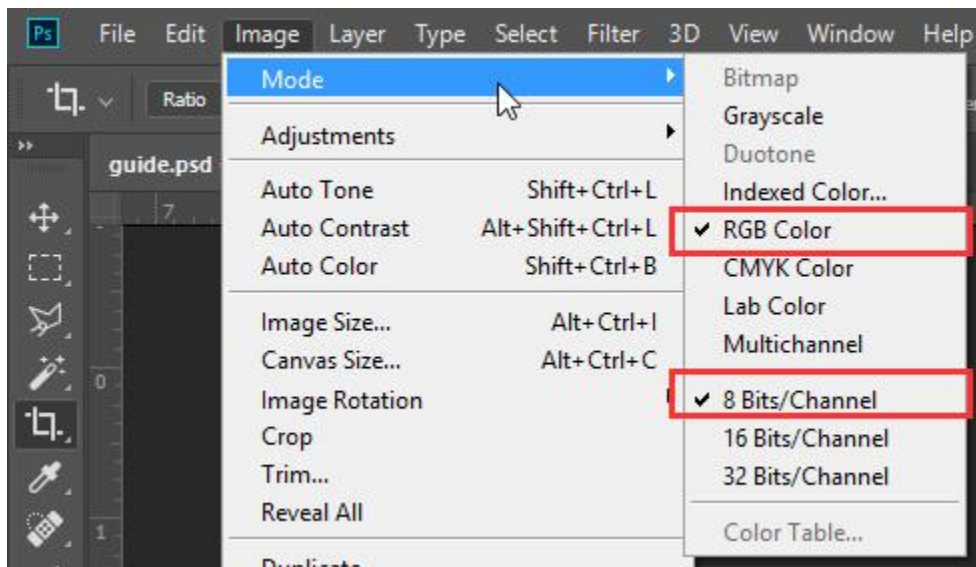
This action has been tested and working on Photoshop (**any language, PC/MAC**) CS4, CS5, CS6, CC, CC 2014, CC 2015, CC 2017, CC 2018, CC 2019, CC 2020 +.

How to Setup

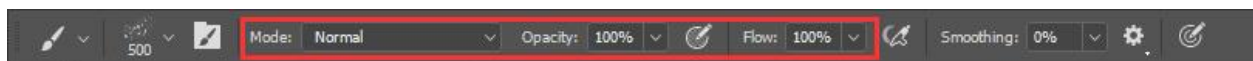
Below are the important pre-requisites according to which the Photoshop document needs to be set for the add-on to work correctly.

IMPORTANT - PLEASE CHECK

1. Your photo is in **RGB** color mode.
2. Your photo is in **8 Bits/Channel** color mode.

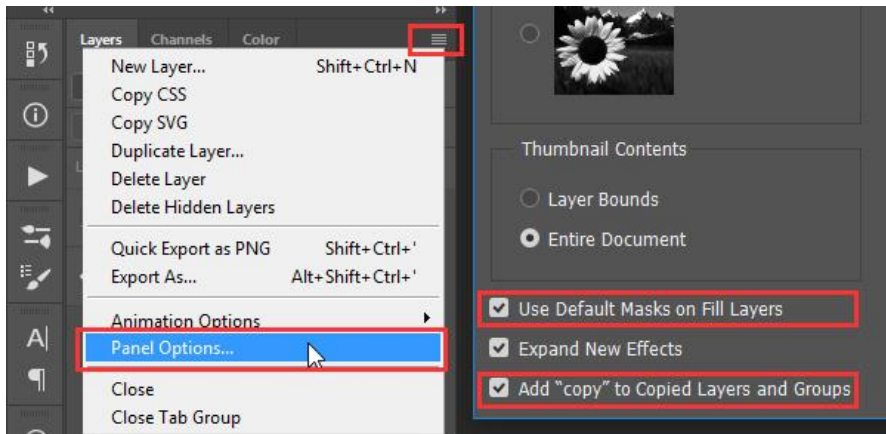


3. **Press B** to select the **Brush tool**. On the top toolbar, make sure **Mode** is **Normal**, and both **Opacity** and **Flow** values are set to **100%**.



4. On the **Layers** panel, click on the menu icon on the top-right corner. Go to **Panel Options...**, and make sure that the **Use Default Masks on Fill Layers** and **Add "copy" to Copied Layers and Groups** are checked.

This option applies only to CS5 and later versions of Photoshop.



5. For the best results, use Photos between **1500px - 5000px high/wide** and **72-300 dpi resolution**. Recommended size of the image is between **1500px - 5000px high/wide** along the shorter side.

If you want to adjust the image size, go to "Image" > "Image Size..." and change them to the specified dimensions.

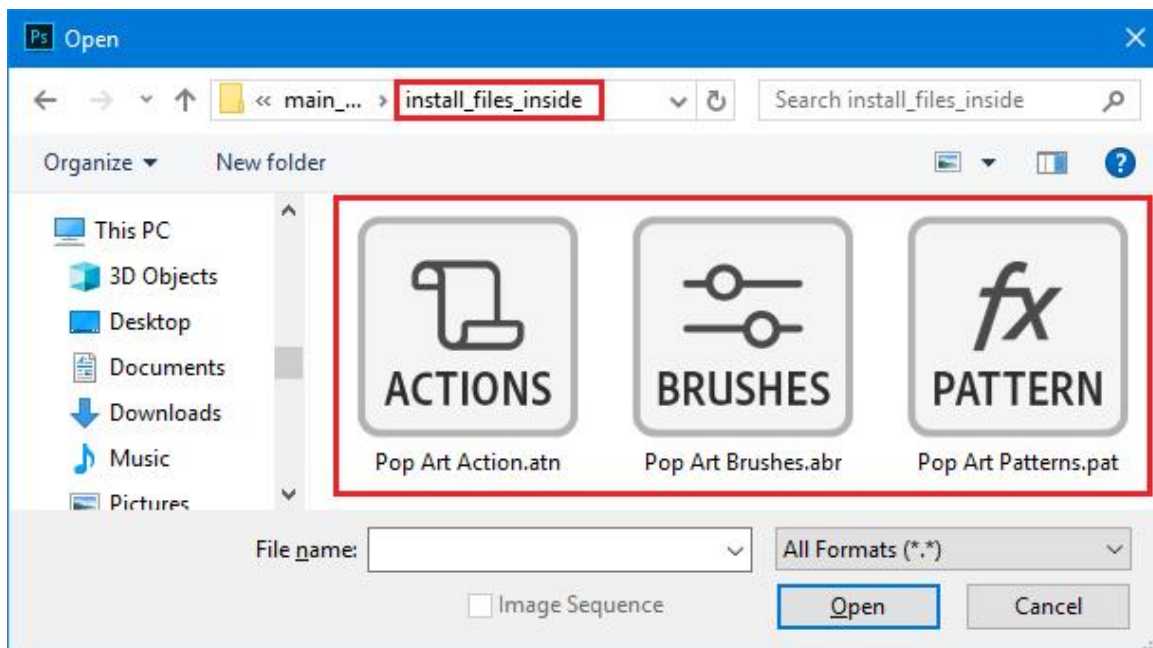
If you are experiencing errors, try resetting your Photoshop preferences. To do this, hold down **Alt, Ctrl, and Shift keys (for Windows) or Command, Option and Shift keys (for Mac)** while starting up Photoshop. A dialog box will appear asking if you wish to delete the preferences/settings file.

How to Install

In the below steps we will be installing the main files of the add-on into Photoshop.

INSTALL ACTION, BRUSH & PATTERN FILES

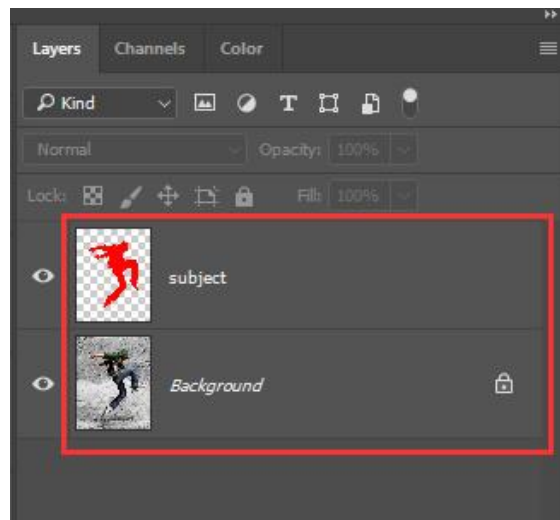
1. Inside Photoshop, go to the **File > Open....**
2. Inside the Open window, navigate to the main **Pop Art Photoshop Action** folder which you downloaded.
3. Navigate inside the **install_files_inside** folder.
4. Select the following files – **"Pop Art Action.atn"**, **"Pop Art Brushes.abr"** and **"Pop Art Patterns.pat"**.
5. Click **Open** to load the files in **Photoshop**.



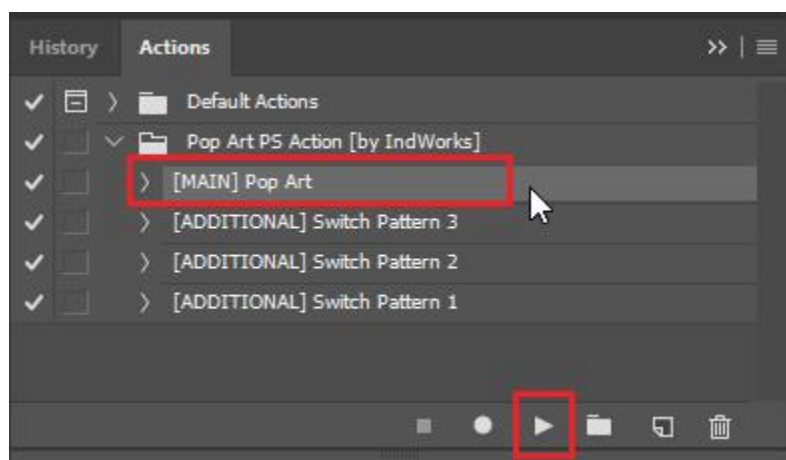
Play the Action

1. **Open** a photo to work with.
2. Create a **new layer above** the main photo layer.
3. With the **new layer** selected, **brush/trace** the main subject areas of your photo that you want to apply the effect to.

RE-CHECK: Press **B** to select the Brush tool. On the top toolbar, make sure **Mode** is **Normal**, and both **Opacity** and **Flow** values are set to **100%**.



4. Bring up the Actions panel by going to **Window > Actions**.
5. Now select the **Illustration Painting Action (according to your Photoshop version)** and click **play**.



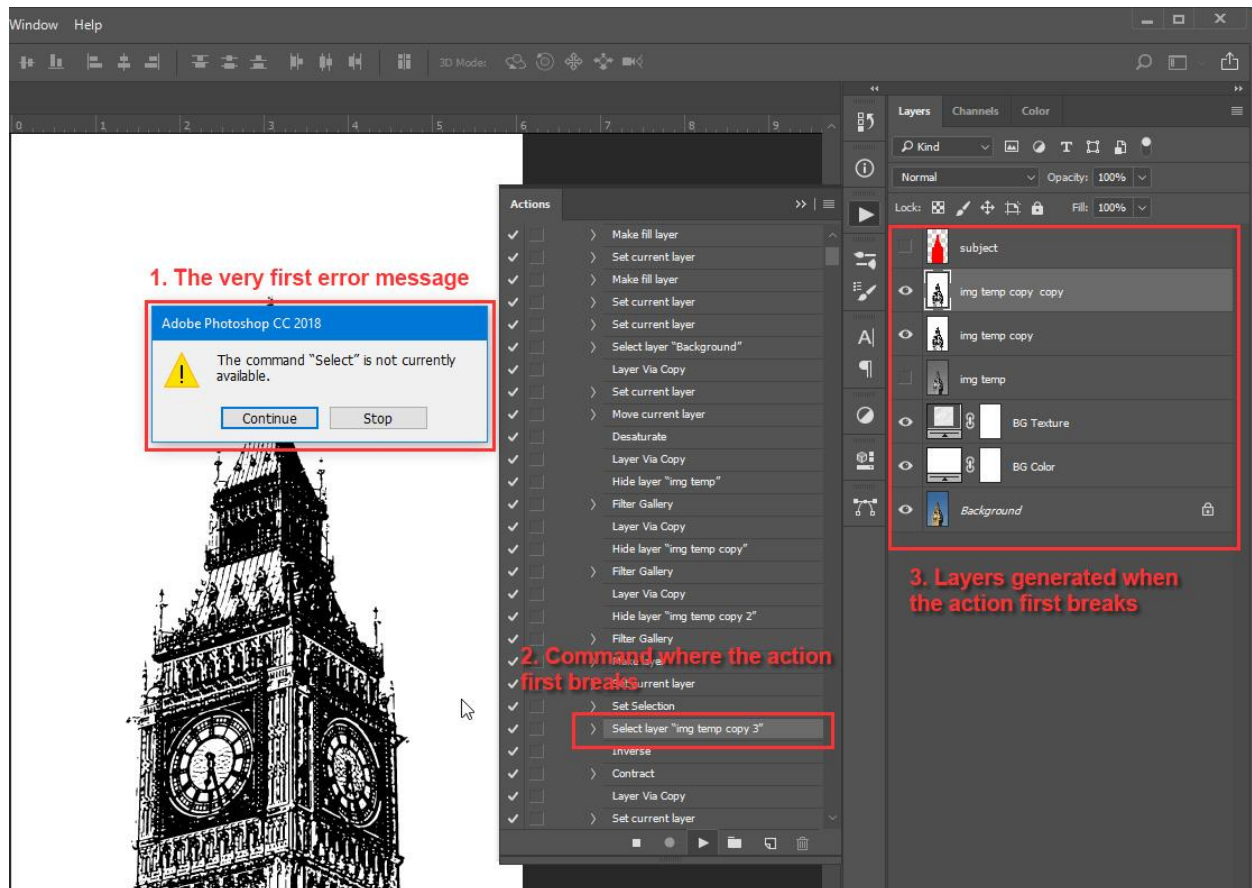
Please refer to the video tutorial if you need assistance with these steps.

Facing any Issues

If you need any help with the action, please **comment on the item page** or send an **email from the profile page** [here](#).

If you are getting any error messages, please email the error screenshots with the below details in the snap-

1. The **very first error** message that pops up
2. The **command** (expand the action) where the action **first breaks**
3. **Layers generated** in the Layers panel till the action breaks



Will be happy to help you.
Thank you for your support.

IndWorks