

# How To Install

## STEP BY STEP GUIDE

# CONTENTS

Lightroom ..... 3

Lightroom Mobile Preset ..... 9

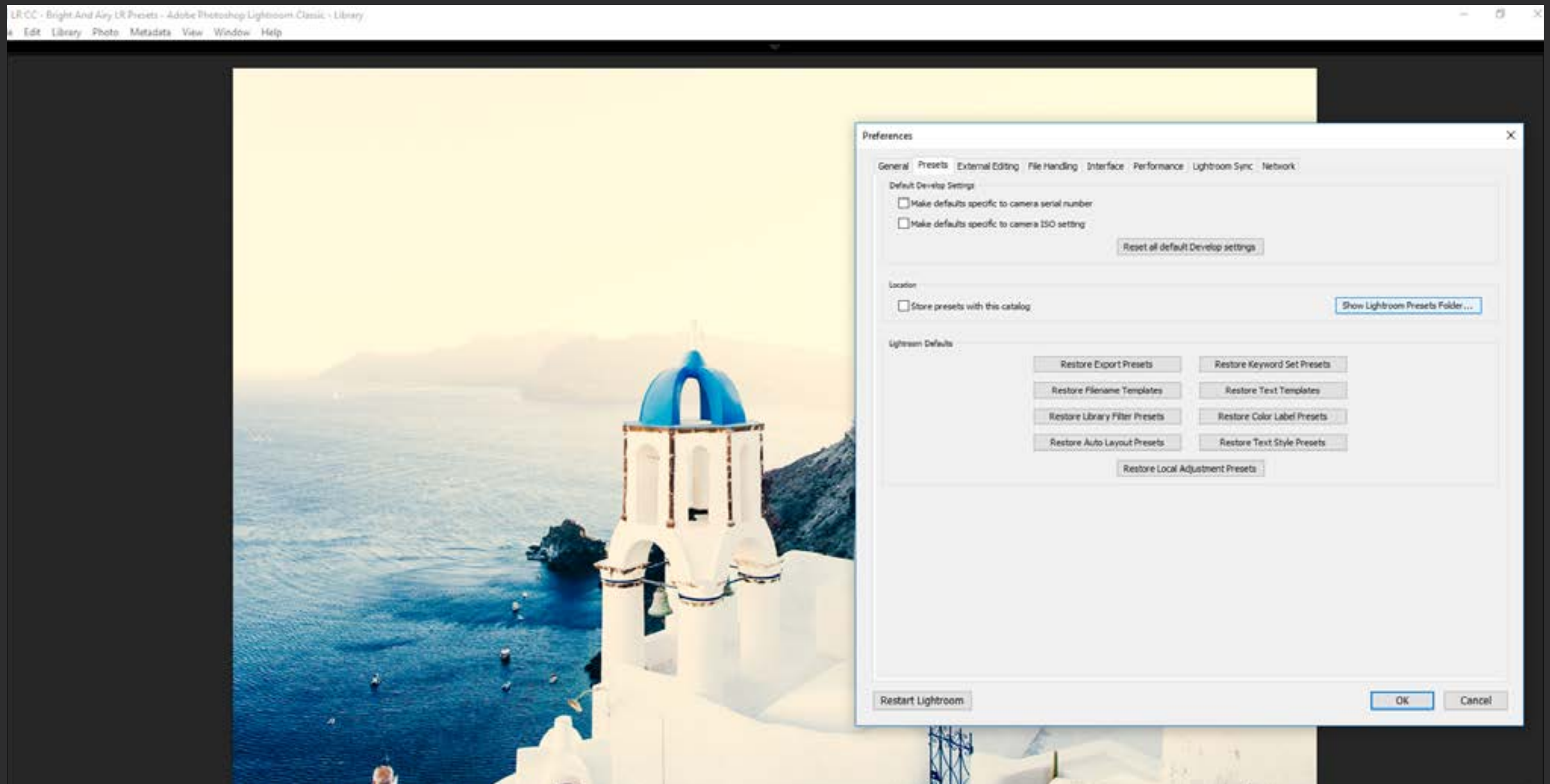
The icon consists of three horizontal white lines of equal length, stacked vertically. The middle line is slightly offset to the left, creating a sense of depth or a stylized 'L' shape.

# LIGHTROOM

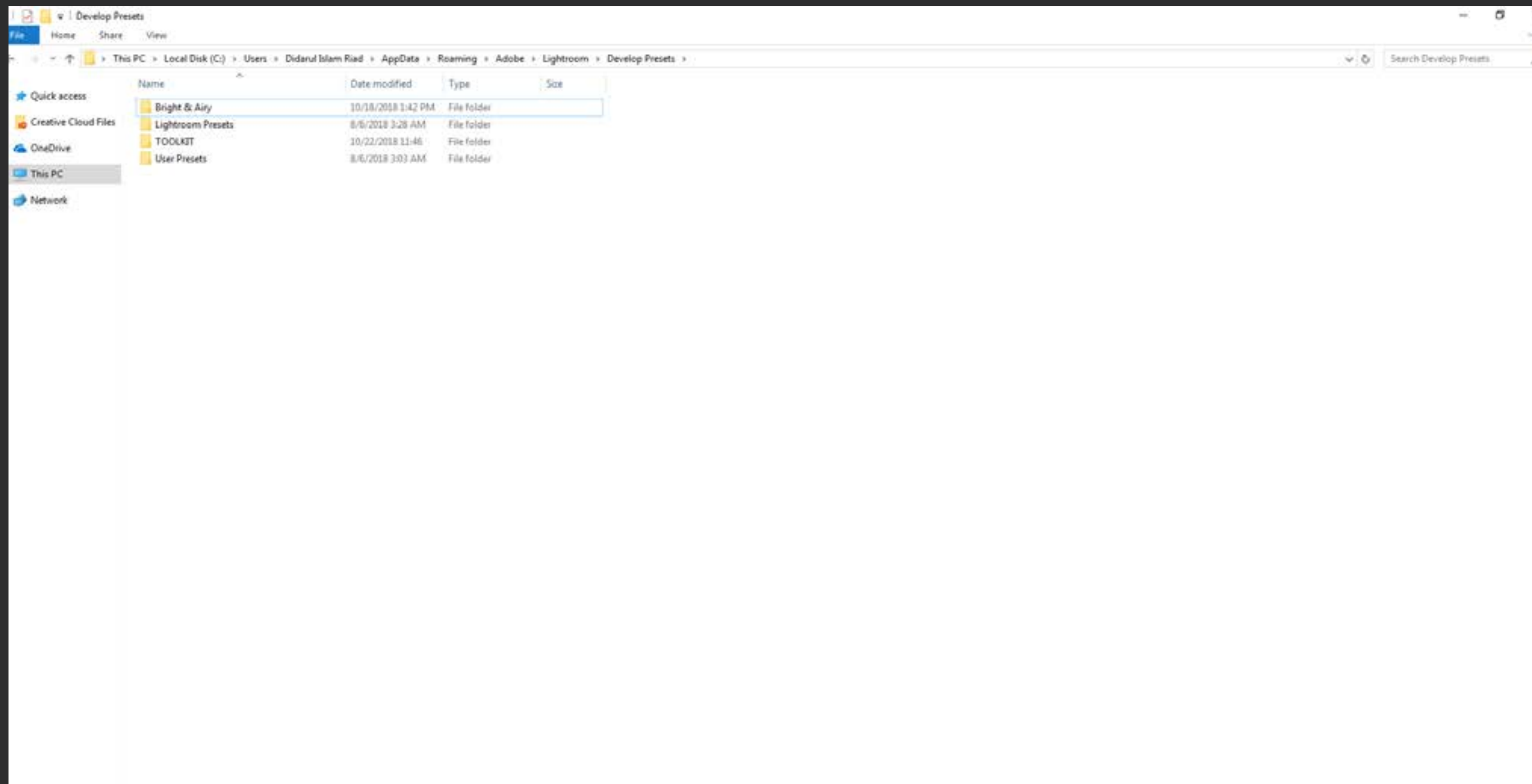
1. Download and Unzip the Moody Lightroom Presets you have purchased.



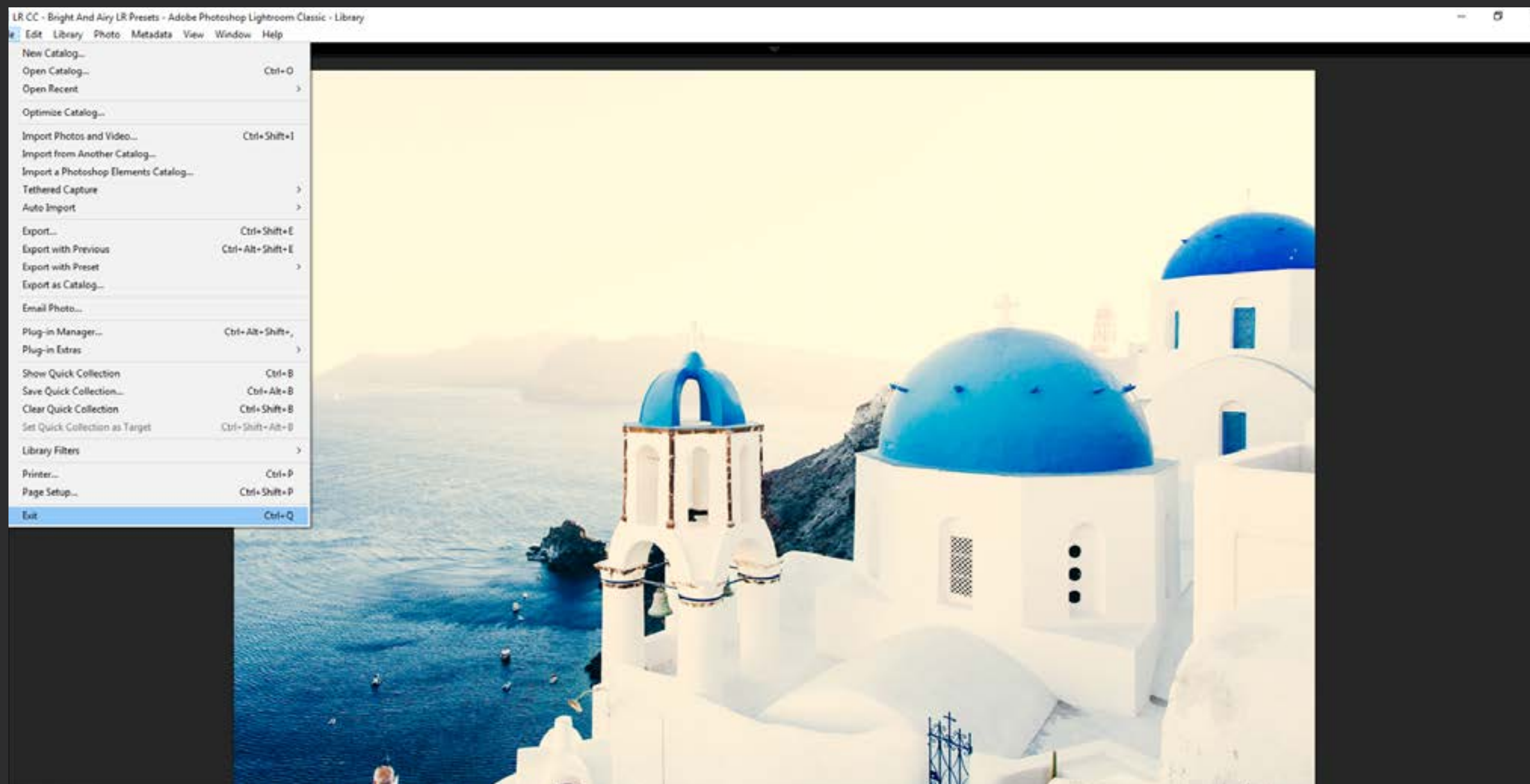
## 2. Launch Adobe Lightroom. Open Settings and click **Show Lightroom Presets Folder**



### 3. Put the presets you purchased into **Lightroom Presets Folder**



## 4. Restart Lightroom to activate new presets.





## 5. Enjoy!







# MOBILE PRESETS

# How to install your Lightroom Mobile Preset

1. Install the Lightroom App on your phone and create an Adobe account (It's free).
2. Download the DNG file to your Mobile Phone or Tablet.
3. Open the Lightroom App > Click on the "+" icon to create a new album. Name it whatever you want (PixelHive-Cloudberry recommended)
4. With the new album open, click the "Add image" icon, it's usually at the bottom.
5. Select the picture with the preset you want to use, then open the Adjustments panel by clicking the icon that looks like 3 sliders on the top right of the screen, now click the "... " Icon, select "Copy setting" and click ok.

6. Go back to the main screen of Lightroom Mobile and locate the photo that you want to edit.
7. Open the photo, then open the adjustment panel, now click the "..."  
icon, select "Paste Settings" and click ok.

Please note that presets are a starting point in your editing process and you may need to adjust the preset in order to make it look great on your photo.

If you have any question about the preset do not hesitate to contact us. If you are with your purchase, please leave us a positive review, that would help us a lot!

Connect With Us On [PixelHive](#) for the latest products, deals & great freebies.