

# How To Install

STEP BY STEP GUIDE

# Kodak Film

LIGHTROOM AND CAMERA RAW PRESETS

[PIXELHIVE PRO](https://www.pixelhive.pro)

[www.pixelhive.pro](https://www.pixelhive.pro)

# LIGHTROOM

1. Download and Unzip the Kodak Film Lightroom Presets you have purchased.

Name	Date modified	Type	Size
Kodak Film Presets For Lightroom & Ca...	8/4/2019 11:49 AM	Compressed (zipp...	26 KB

# HOW TO INSTALL THE NEW .XMP LIGHTROOM PRESETS?

1. Open Lightroom.
2. Go to your Develop Module ( Top right corner )
3. Click the + on your Presets tab and hit "Import Presets"



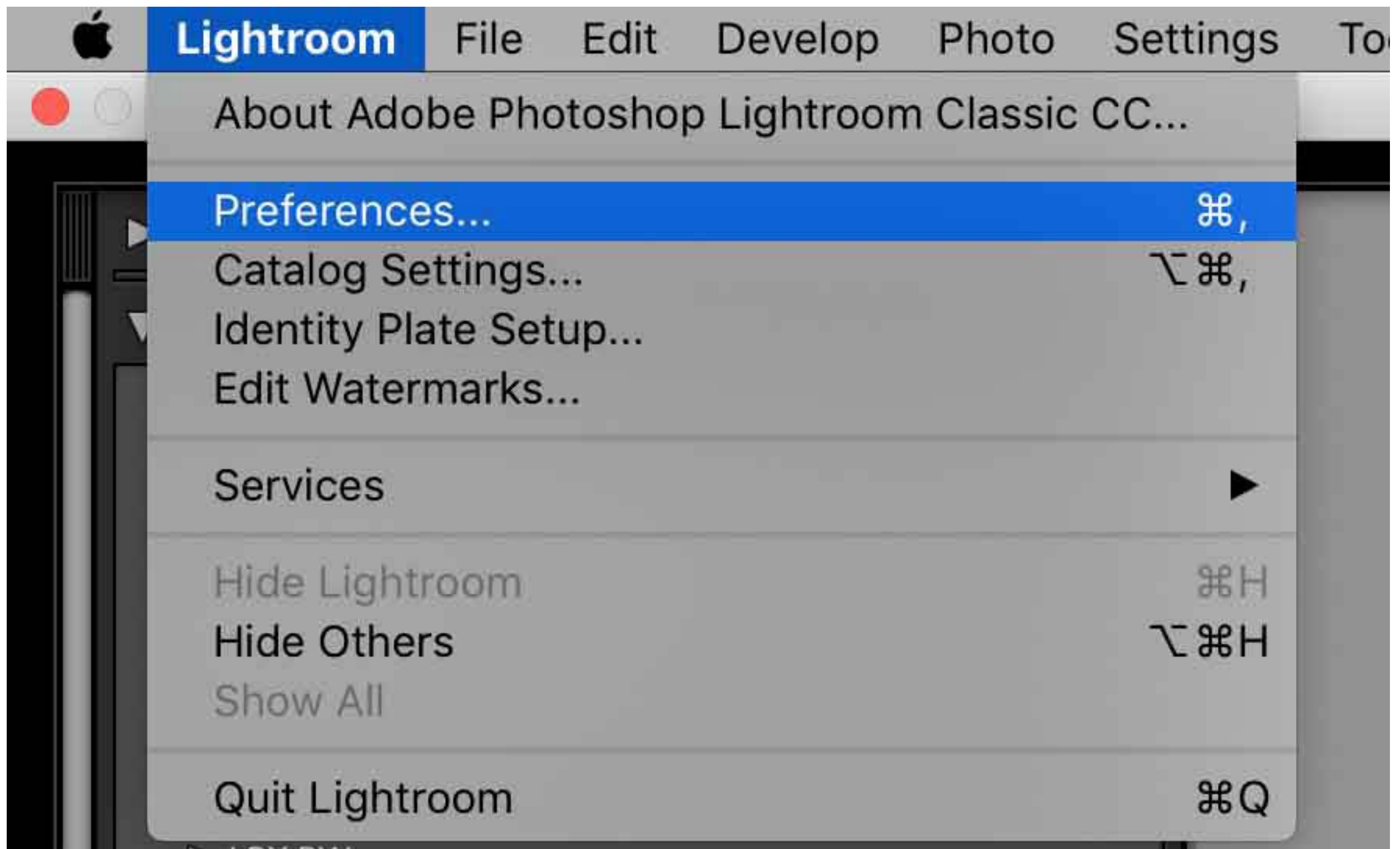
You made it! The Preset can be used in Lightroom now, and you will find it when you open the Presets tab under User Presets. This is by far the quickest and easiest way to install Lightroom Presets in the newest version of Lightroom. You can even install .lrtemplate files in the same way.

While it might be the quickest, it is not the best way, especially if you want to have a clean folder structure for your Lightroom Presets.

[PIXELHIVE PRO](https://www.pixelhive.pro)

# INSTALLING THE .XMP FORMAT AS A FOLDER?

1. Open Lightroom.
2. Go to Lightroom in your main menu and hit Preferences.



3. Click on Show Lightroom Develop Presets in the Preferences Menu.

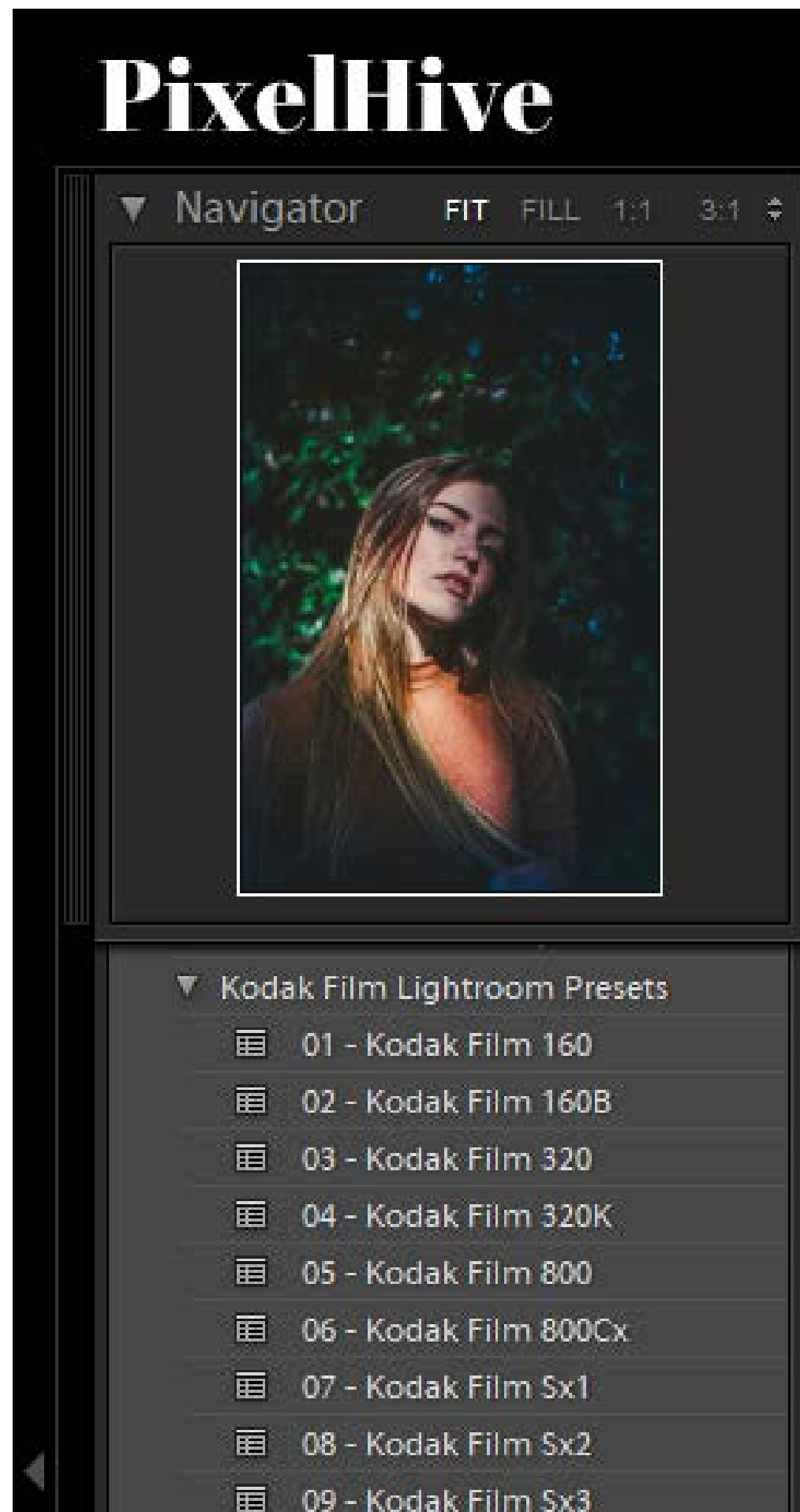


4. Paste your Preset Folder containing the .xmp files into Settings.

5. Restart Lightroom and enjoy your Presets.



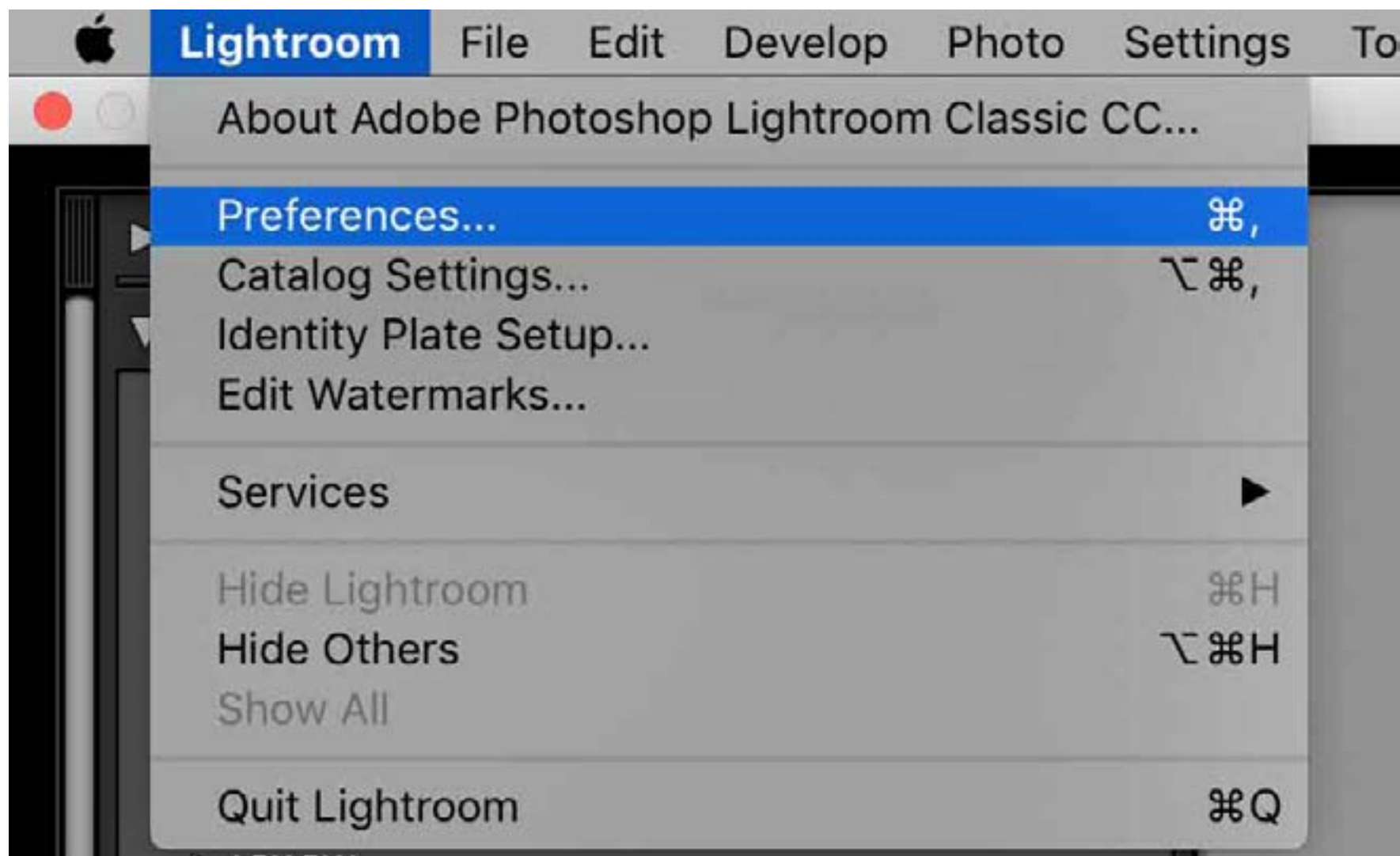
You should be able to see all of your imported Presets as a folder in Lightroom and Camera Raw as well now. Play around with them and have fun!



[PIXELHIVE PRO](#)

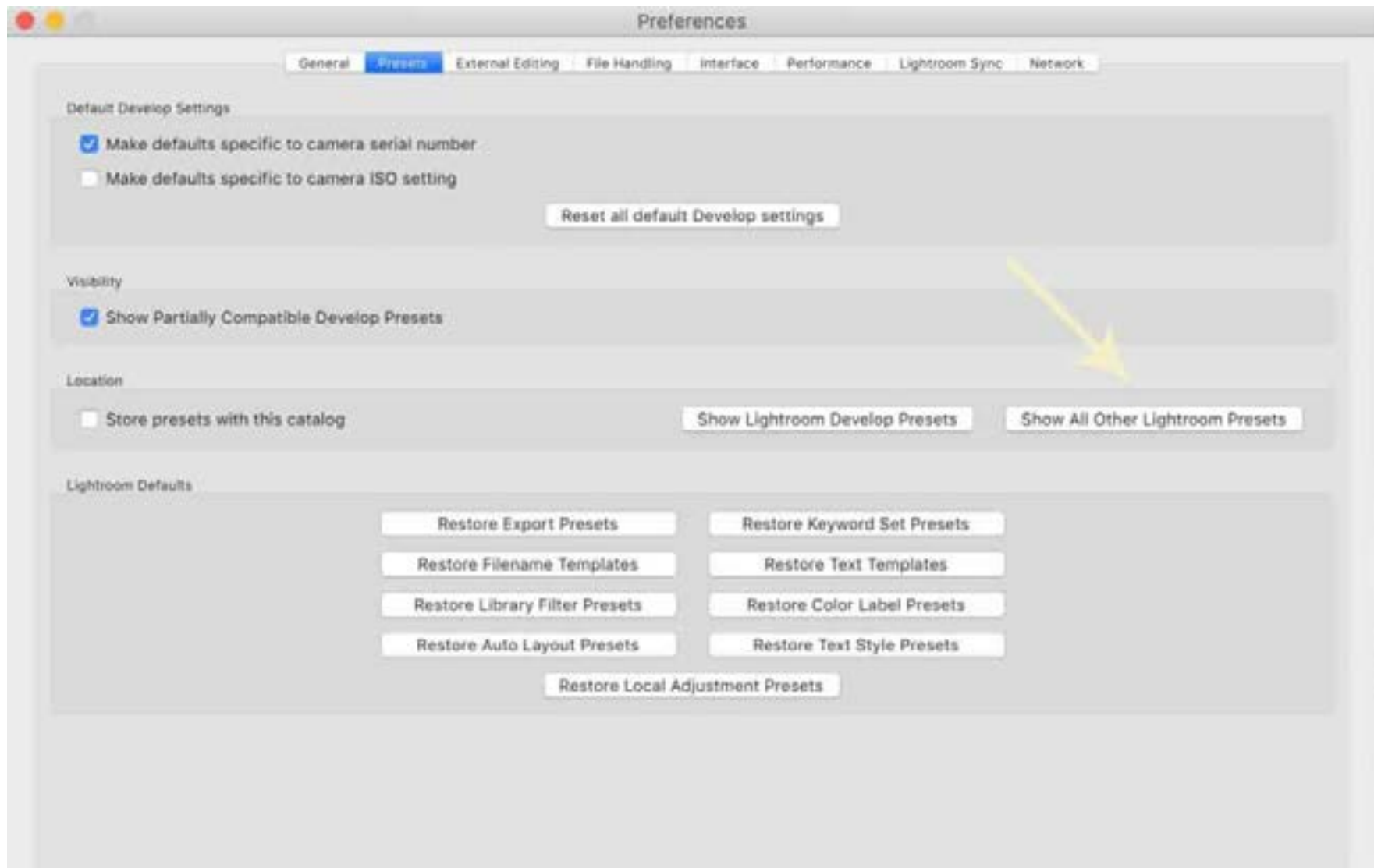
# HOW TO INSTALL PRESETS WITH THE OLD .IRTEMPLATE FORMAT?

1. Open Lightroom.
2. Go to Lightroom in your main menu and hit Preferences





3. Click on Show All Other Lightroom Presets in the Preferences Menu.



4. Paste your Preset Folder containing the .lrtemplate files into Lightroom > Develop Presets.

5. Restart Lightroom and enjoy your Presets.

You should be able to see all of your imported Presets as a folder in Lightroom now.

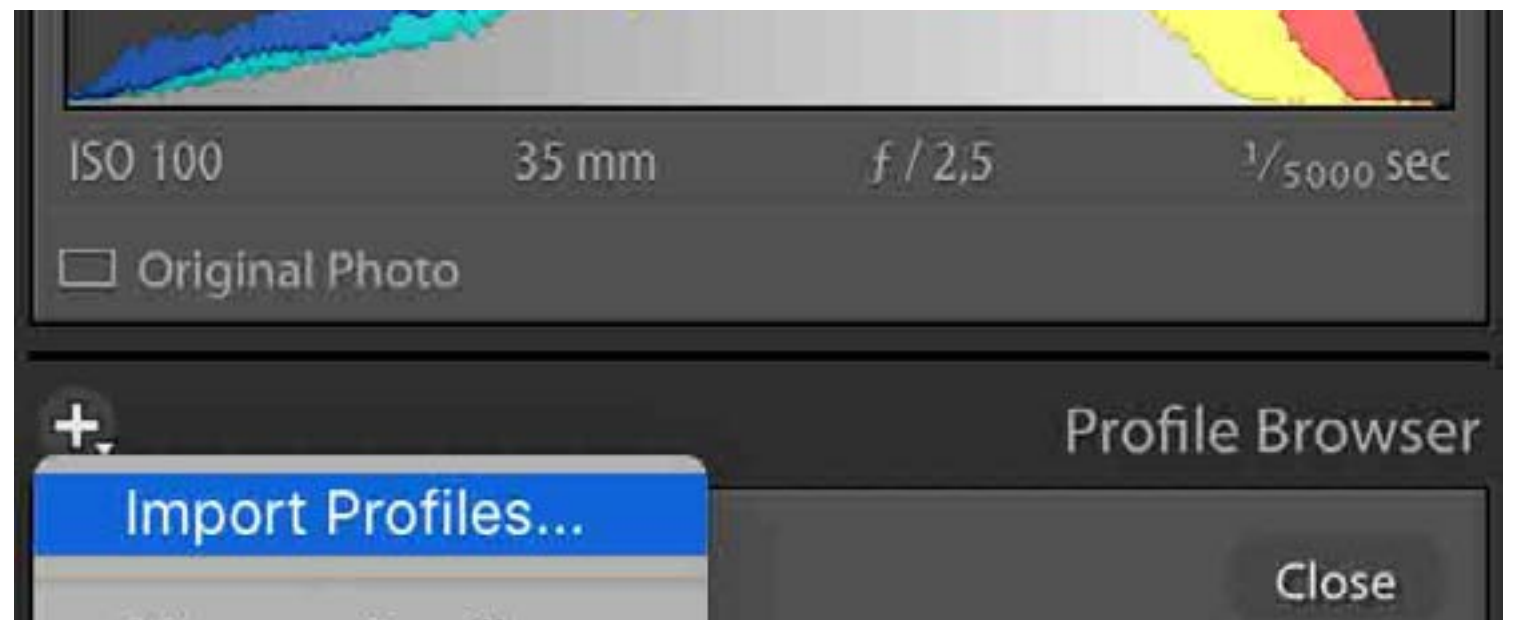


# HOW TO INSTALL PROFILES IN LIGHTROOM & CAMERA RAW?

1. Open Lightroom Classic 7.3 or newer.
2. Select the Profile Browser in the Develop Module.



3. Click on Import Profiles and select your .xmp files.



Your new profiles will show up in the Profile Browser now. They will also be available in Camera Raw now.

If you only use Camera Raw, you just need to open the Profile Browser, right-click into it and import your profiles!

# HOW TO INSTALL YOUR LIGHTROOM MOBILE PRESET

1. Install the Lightroom App on your phone and create an Adobe account (It's free).
2. Download the DNG file to your Mobile Phone or Tablet.
3. Open the Lightroom App > Click on the "+" icon to create a new album. Name it whatever you want (PixelHive-Cloudberry recommended)
4. With the new album open, click the "Add image" icon, it's usually at the bottom.
5. Select the picture with the preset you want to use, then open the Adjustments panel by clicking the icon that looks like 3 sliders on the top right of the screen, now click the "..." Icon, select "Copy setting" and click ok.
6. Go back to the main screen of Lightroom Mobile and locate the photo that you want to edit.
7. Open the photo, then open the adjustment panel, now click the "..." icon, select "Paste Settings" and click ok.

Please note that presets are a starting point in your editing process and you may need to adjust the preset in order to make it look great on your photo.

If you have any question about the preset do not hesitate to contact us. If you are with your purchase, please leave us a positive review, that would help us a lot!

Connect With Us On [PixelHive](#) for the latest products, deals & great freebies.

[PIXELHIVE PRO](#)