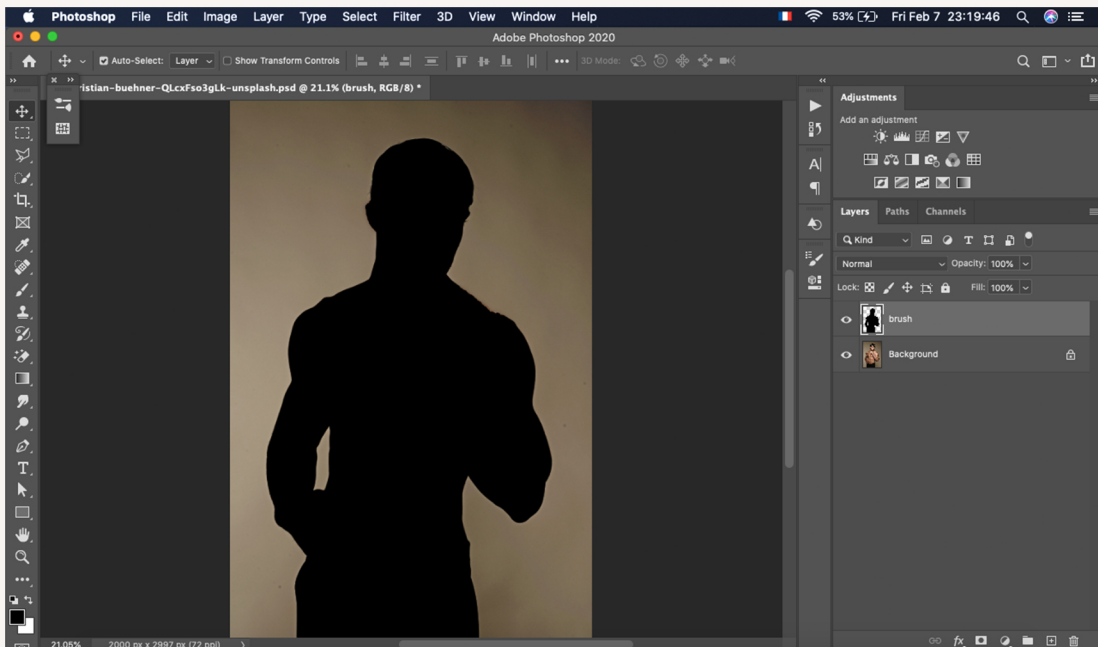


# Hello There!!

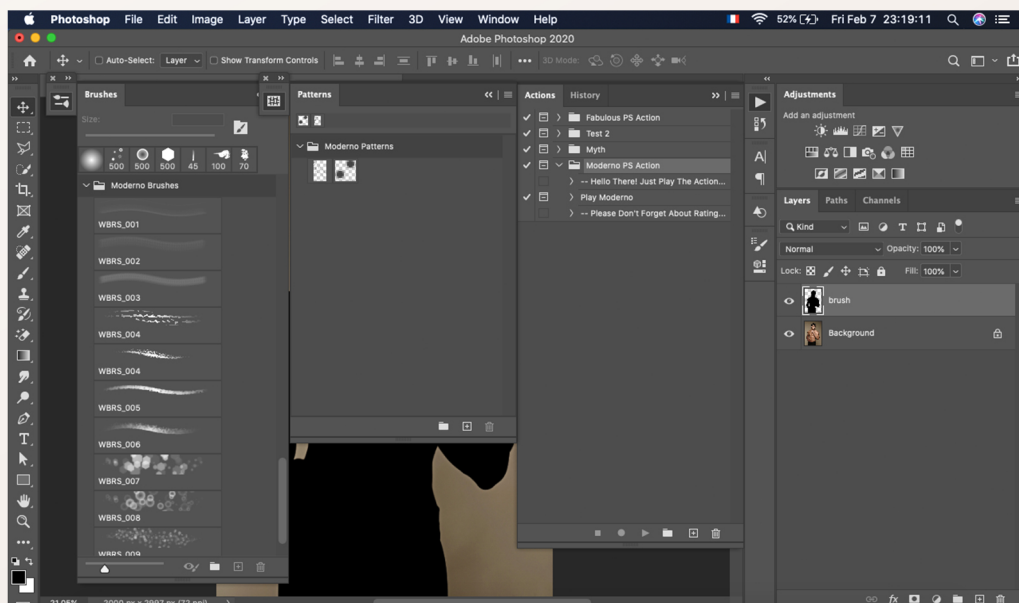
Thanks for taking my action

## 1. How to use Moderno

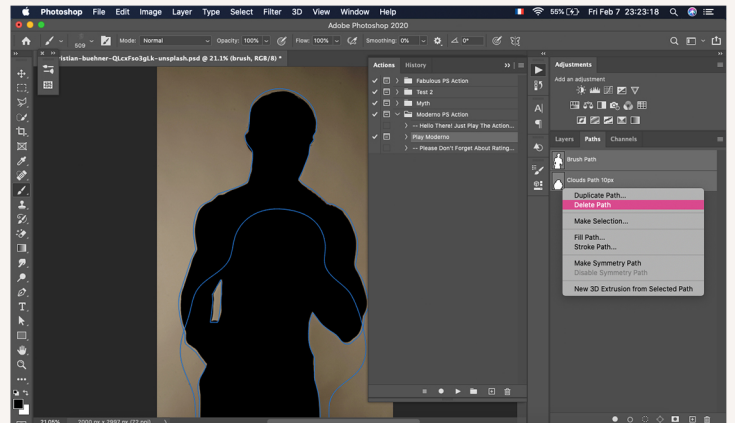
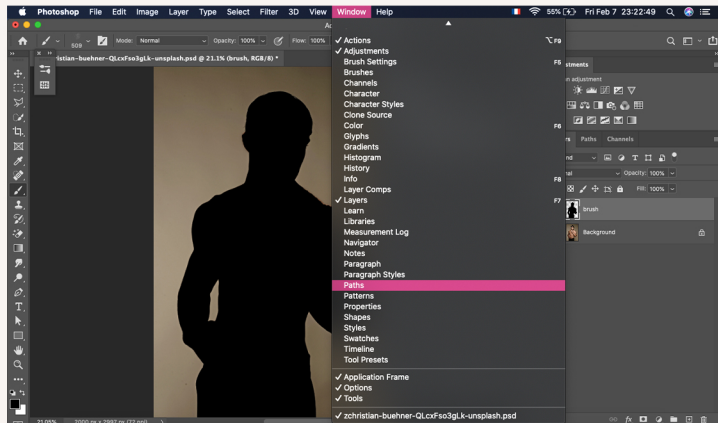
- Open your image inside photoshop, create new layer and name it "brush" with lower cases and choose a soft brush. brush on your object, but for better result use the selection tools to select your object and brush it on "brush" layer with any color you want.



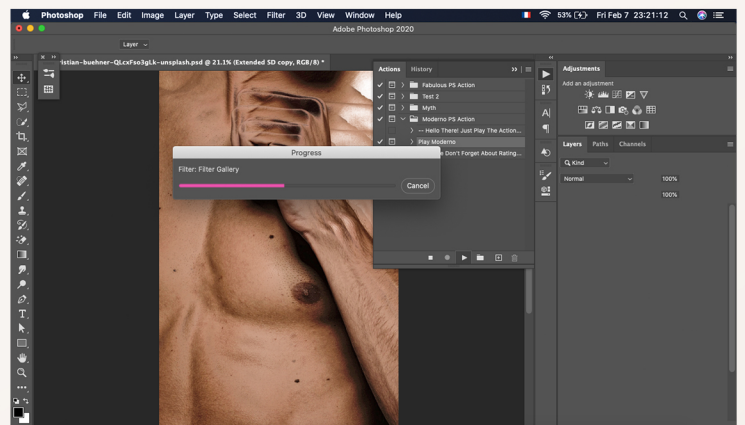
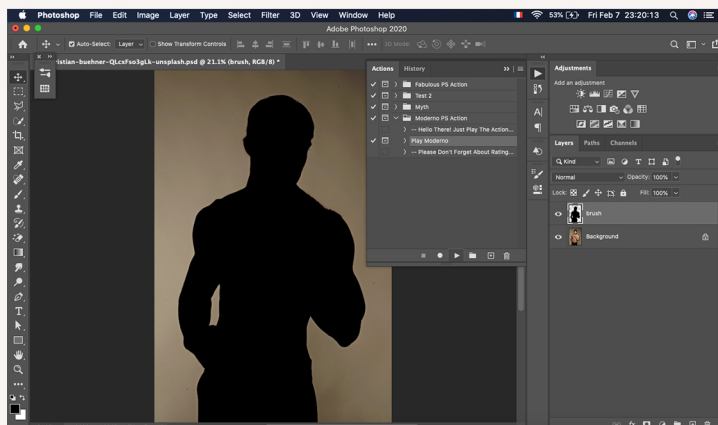
- Load the the resources from download file, and it must be: Moderno Action – Moderno patterns – Moderno Brushes.



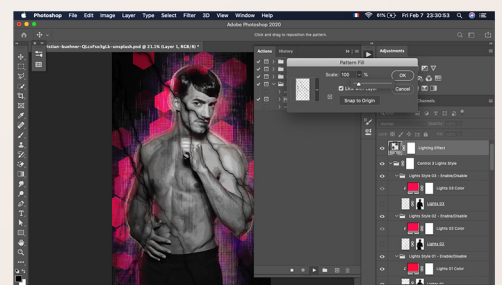
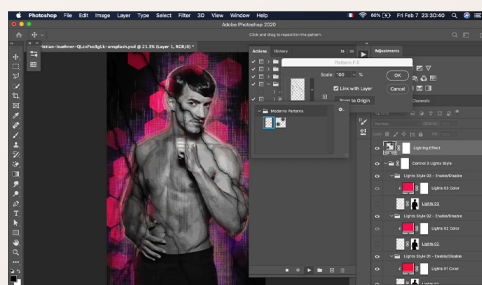
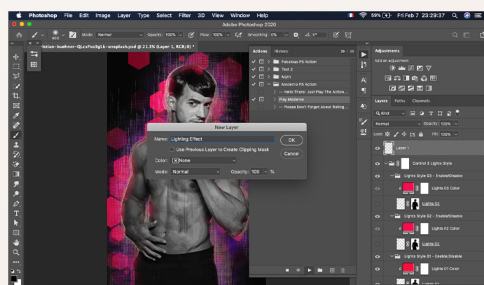
- Before playing the action you must do an important step, Go to Windows → Paths and select all paths you have, and delete them before playing the action.



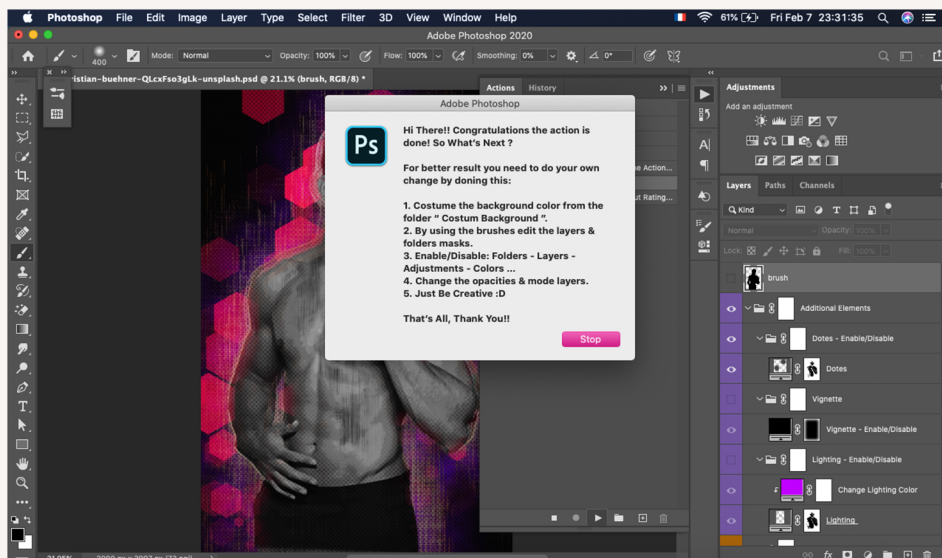
- Select "brush" layer, and inside Action Panel open **Moderno** folder and choose "Play Moderno" and click Play. and wait until the processing ends, you need to know the speed of the processing's depends to your PC power.



- In the middle of the processing you'll see a pup-up window, you need to costume the lighting effect, if you want not to apply it just ignore this step and don't you worry about it, you can costume it later. So to do it, just give the pattern a name and click OK, then choose the "Moderno Patt\_01" pattern from the folder "Moderno Patterns", then costume the pattern by changing the scale or drage it with your mouse, when you its look's good click OK to continue.

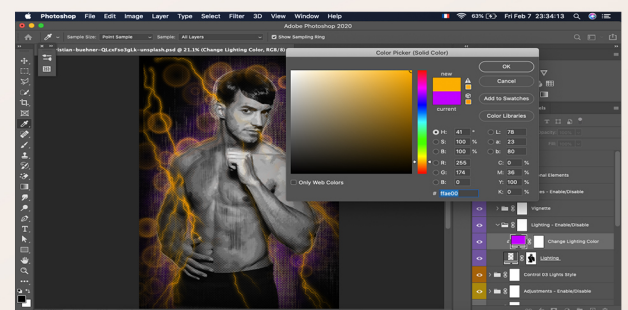
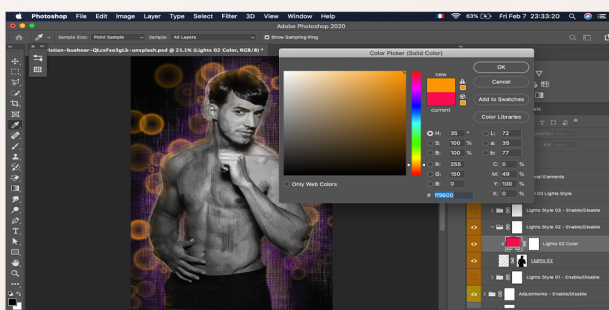
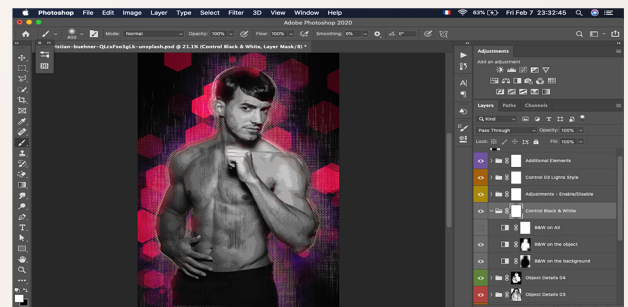
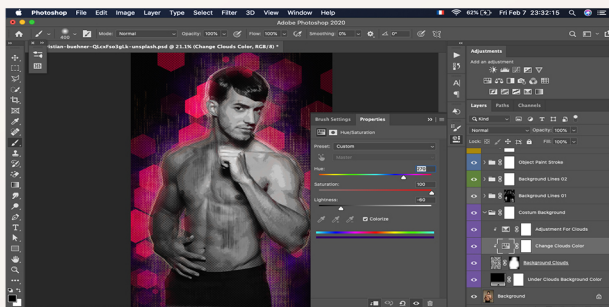


- When you see that message, that's mean the processing is done so congratulations. just click stop, the next step is to costume the work to make your own results.



## 2. How to Edit The Effects MODERNO

- Open "Costume Background" Folder, and choose the layer "Change Clouds Color", and change the background color from it with HUE/SATURATION Adjustments. then open the folder "Control Black & White" and enable/disable the B&W adjustments as you want. then open the folder "Control 03 Lights Style", and enable/disable your favorite light style, then open 1 of the 3 folders and change the color from the COLOR FILL to any color you want, and finally open the folder "Additional Elements", Enable/Disbale your favorite elements, and costume it, you'll get 3 elements inside: Dotes - Vignette - Lighting. it's 100% editable.



- That's All and this is the final result, as you see it's different it's a big difference between the default result and this result so you can get a lot of results if you make your own edit



If you have any quastion just ask me in the item page in the comments, or contact me at: [hamzaelmarjani.dev@gmail.com](mailto:hamzaelmarjani.dev@gmail.com)

If you like my work don't forget to **rate** it inside your download page in Graphicriver, that's will **support** me a lot

