

Hi!

Thank you for your purchase :)

Please follow all steps carefully, it will help to avoid errors.

1 Check the settings of Photoshop and tools

1. Check your image size.

Recommended image size is from **2000 to 5000 px** on larger side for best effect.
(optimal size 3000 - 4000 px)

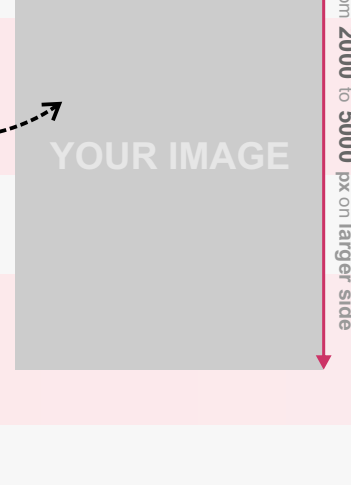
2. This action work only with **CS6 and higher versions**.

3. Make sure you are using the **ENGLISH** version of Photoshop.
(Edit/Preferences/Interface)

4. Check the «RGB color» and «8 Bits/Channel».
(Image/Mode)

5. Check the «**Add «copy» to Copied Layers and Groups**».
(Click on menu icon at the right on «LAYERS» panel and go to «Panel Option...»)

6. Select **Brush Tool** and make the **settings like on the screenshot**.
(Opacity and flow should be 100% and turn off the pressure)



2 Install SuperHero 2 Action and its components

1. Load «SuperHero 2 Brushes» file;
(Edit/Presets/Preset Manager/Brushes/Load)

2. Load «SuperHero 2 Gradients» file;
(Edit/Presets/Preset Manager/Gradients/Load)

3. Load «SuperHero 2 Styles» file;
(Edit/Presets/Preset Manager/Styles/Load)

4. Load «SuperHero 2 Photoshop Action».

(For that go to: Window/Actions, click on menu icon at the right and choose in list «Load Actions...», find the action on your computer and open it)

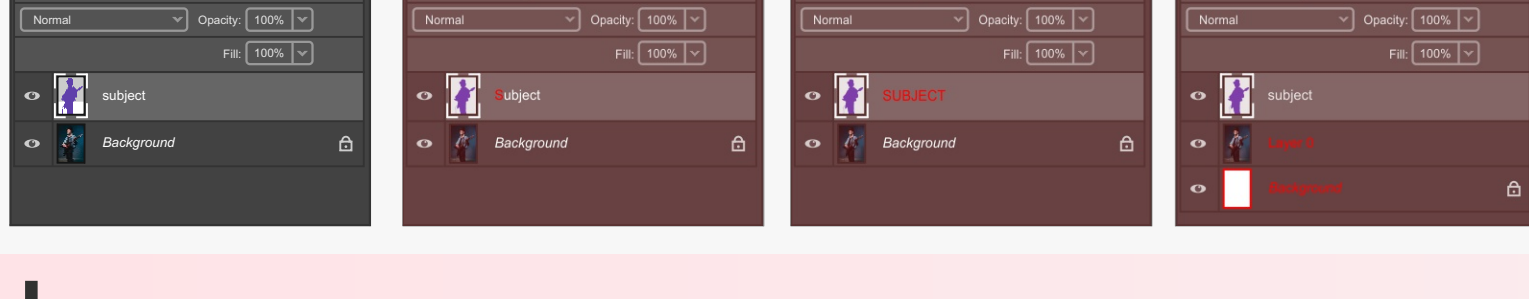
3 Create mask

1. Make sure the image layer is fixed as a «**Background**».

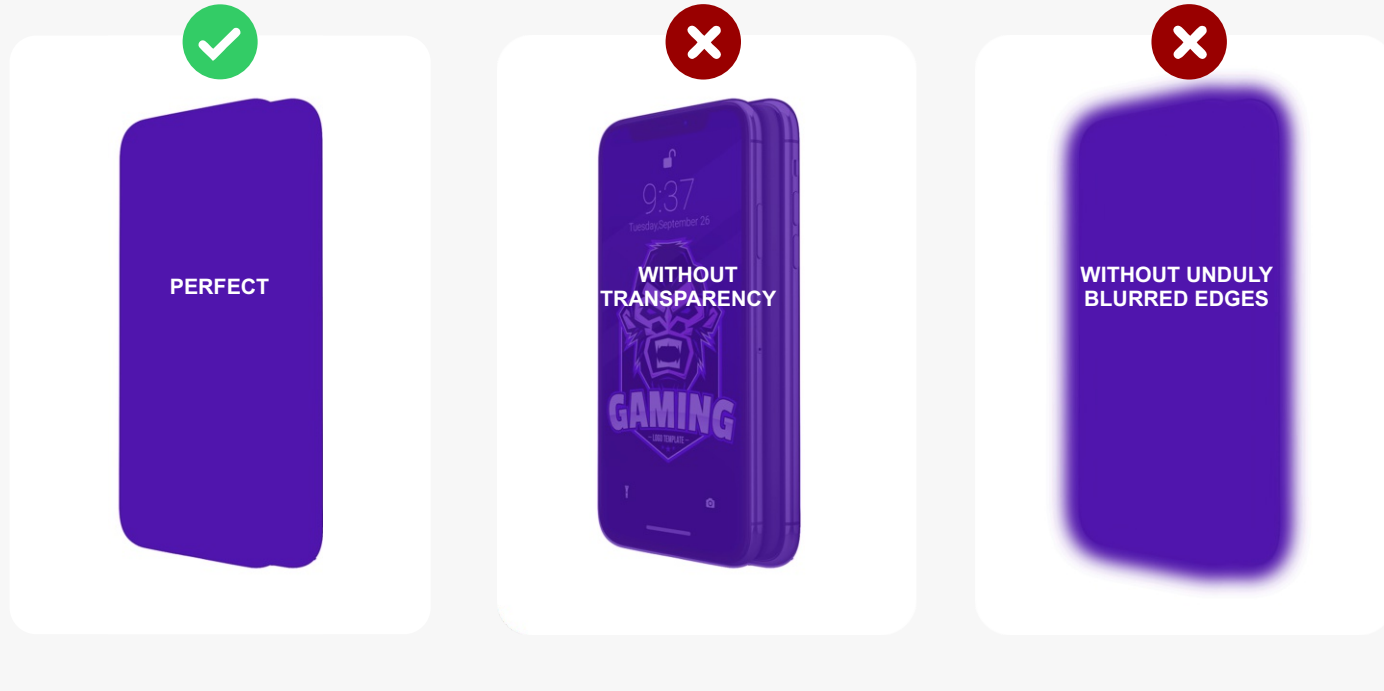
(Go to Layers/New/Layer from Background)

2. Create one layer and name it – **subject**.
(don't use Caps Lock)

3. Create on this layer mask.
(you can use any colors)



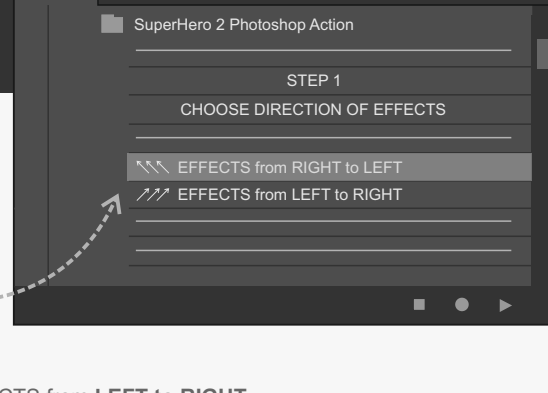
Don't leave the layer with mask empty.



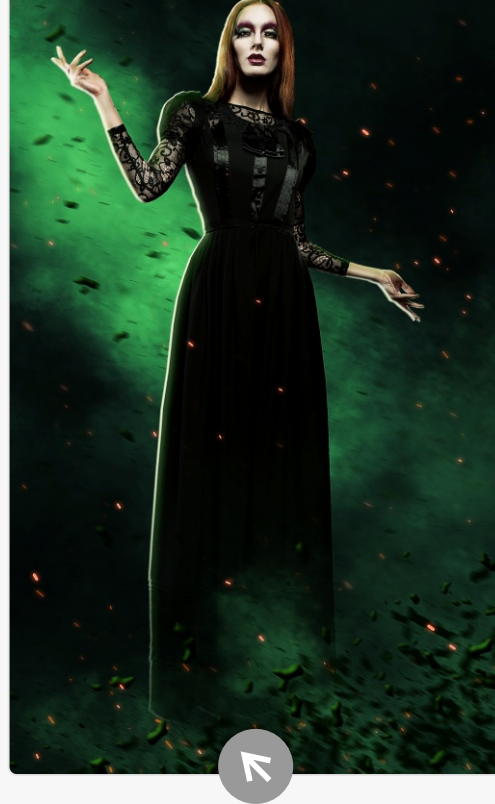
4 SuperHero 2 Action STEP 1 Create an effect

1. Find «SuperHero 2 Photoshop Action» on the action list, **choose one of two directions of effects** (from STEP 1) and click «Play».

(for that go to: Window / Actions)



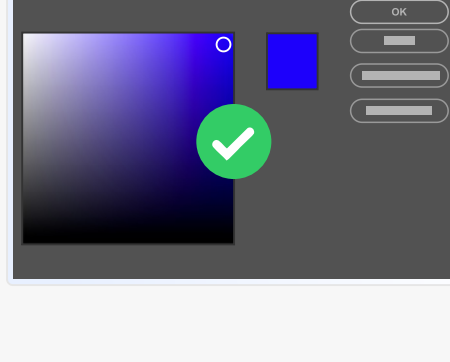
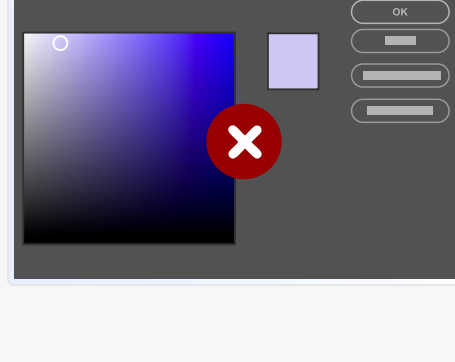
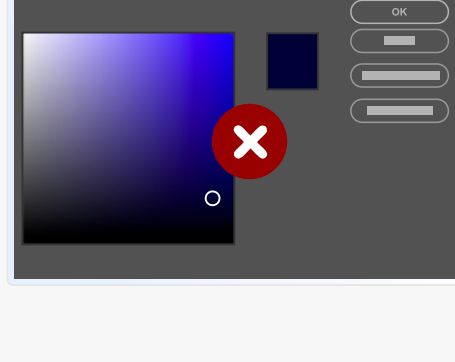
EFFECTS from RIGHT to LEFT



EFFECTS from LEFT to RIGHT



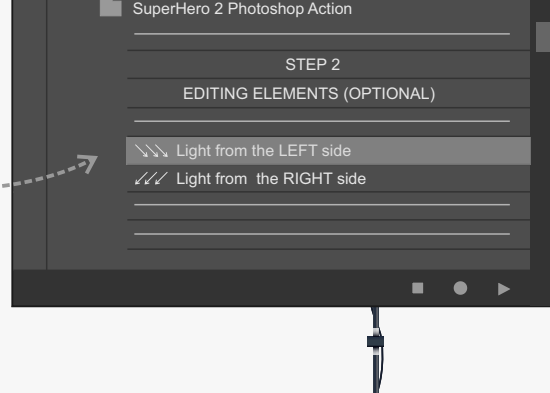
2. When you need to choose a color for effects, **choose saturated colors**, then the effect will look more impressive.



5 SuperHero 2 Action STEP 2 Editing elements (light)

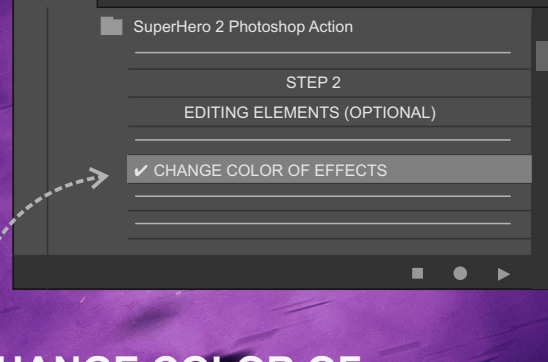
1. After completing STEP 1, you can select the direction of lighting using **STEP 2**.

To change the direction of the lighting, you don't need to reset all the settings, **just select one of the 2 actions with the direction** and click “play” again.



6 SuperHero 2 Action STEP 2 Editing elements (color of effects)

1. «**CHANGE COLOR OF EFFECTS**» will help you change the color of the main effects.



If you get errors while playing the action, please don't ignore them, reset all settings of the action and carefully read the instruction, before start again.

Email Attant

If you have any problems with the action and you can't solve it yourself, write to me (use the **feedback form** on the main profile page).

Message

Send

(click on)

Most of our works, see on:



(click on)

