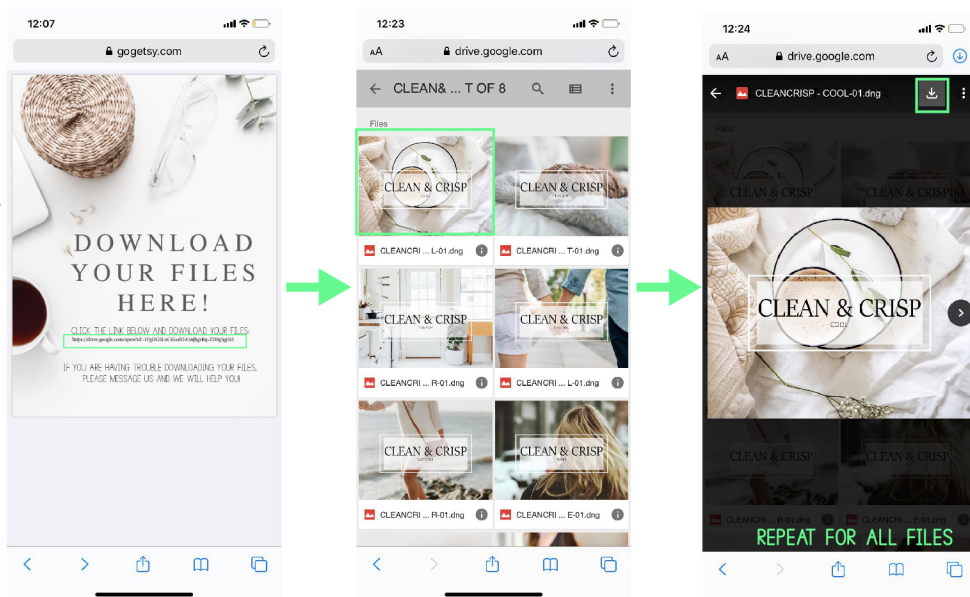


MOBILE PRESET DOWNLOAD INSTRUCTIONS FOR IPHONE/IOS

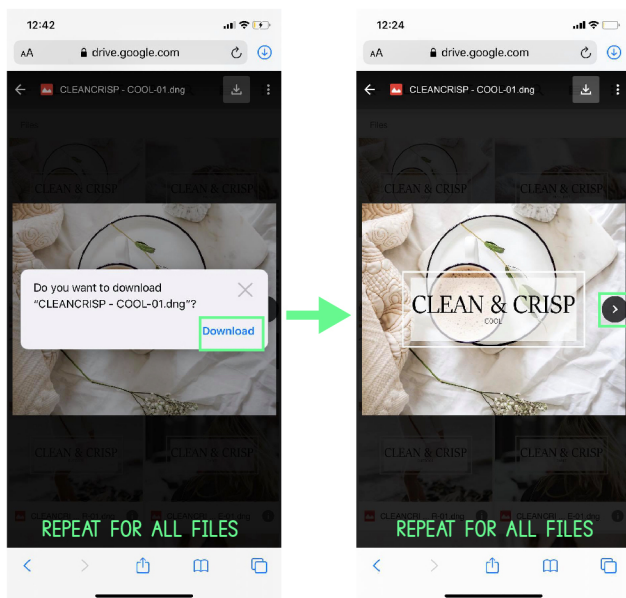
PLEASE NOTE: ALL PHONES ARE DIFFERENT, SO IF THESE INSTRUCTIONS ARE NOT WORKING FOR YOU, PLEASE MESSAGE ME SO THAT I CAN PERSONALLY WALK YOU THROUGH!

ONCE YOUR PAYMENT HAS BEEN PROCESSED, YOU SHOULD RECIEVE AN EMAIL WITH A LINK TO YOUR FILES.
IF YOU ARE HAVING ISSUES LOCATING YOUR FILES, PLEASE EMAIL ME AND I WILL SEND YOU THE FILES MANUALLY!

STEP ONE: CLICK ON THE LINK IN THE PDF FILE.
ALL THE DNG FILES SHOULD POP-UP. CLICK ON
THE FIRST FILE AND THEN CLICK THE
DOWNLOAD BUTTONAT THE TOP RIGHT CORNER.

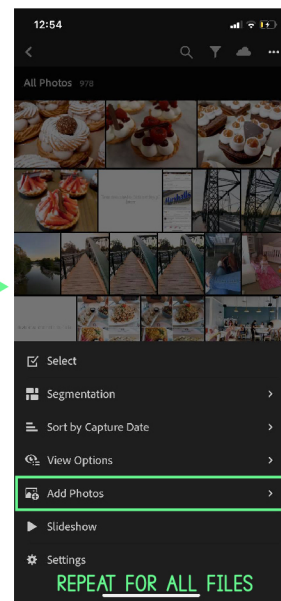
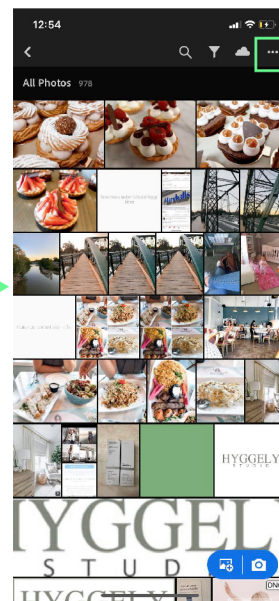
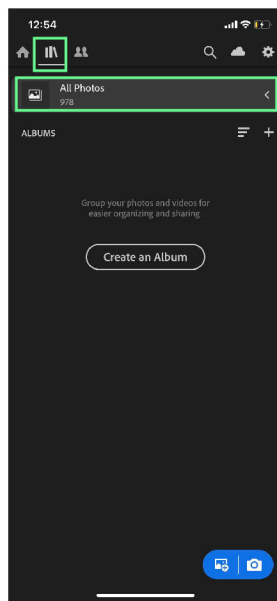


STEP TWO: CLICK ON "DOWNLOAD" WHEN THE
DIALOG BOX POPS UP.
THEN CLICK ON THE RIGHT ARROW AND
DO THE SAME DOWNLOAD PROCESS FOR
ALL THE PRESET FILES.

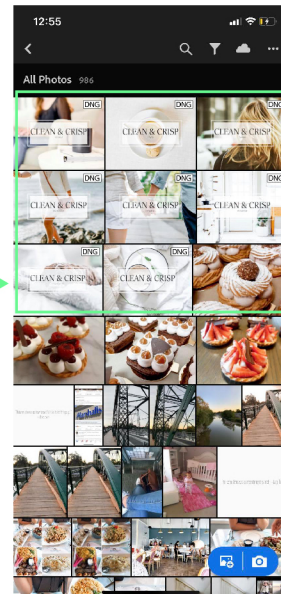
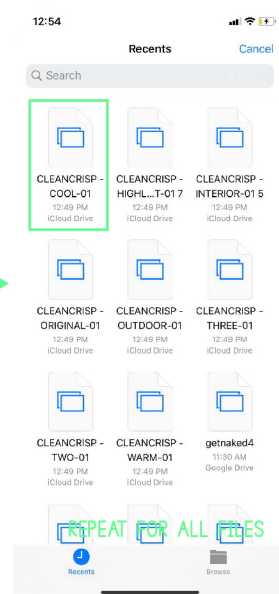
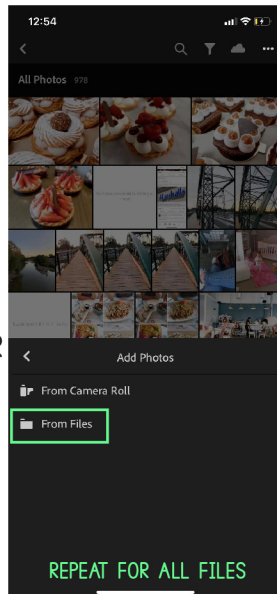


STEP THREE: ONCE YOU GET THAT FAR, AND YOU HAVE ALL FILES DOWNLOADED TO YOUR PHONE, OPEN UP YOUR LIGHTROOM APP. CLICK ON THE LIBRARY ICON (BOOKS) AND THEN CLICK 'ALL PHOTOS'

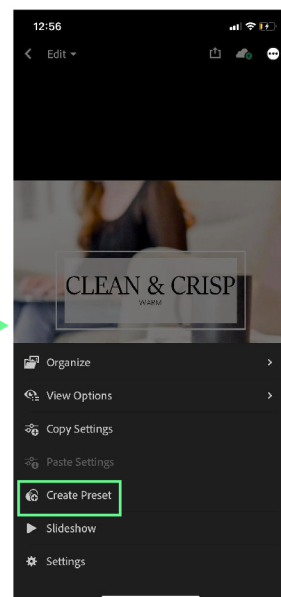
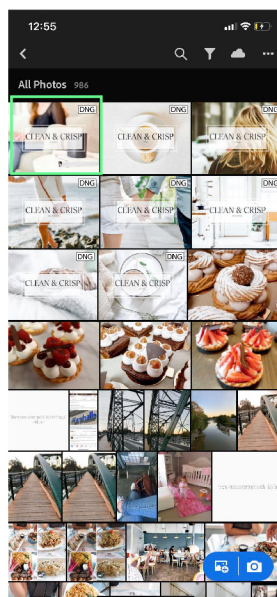
CLICK ON THE 3 DOTS AT THE TOP RIGHT CORNER AND CHOOSE 'ADD PHOTOS'



STEP FOUR: CLICK ON "FROM FILES". YOUR FILES SHOULD POP-UP. MAKE SURE YOU ARE ON THE "RECENT" TAB. CLICK ON THE FIRST FILE. THEN RE-DO THE "ADD PHOTO" "FROM FILES" STEP UNTIL YOU HAVE ALL YOUR DNG FILES ADDED TO YOUR "ALL PHOTOS" TAB.



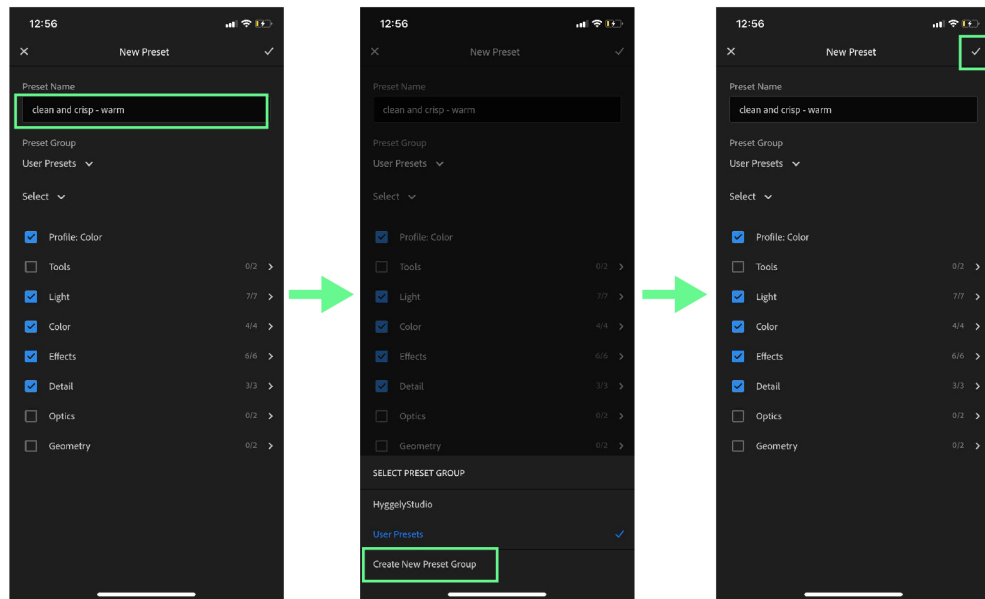
STEP FIVE: AFTER YOU ADD ALL DNG FILES, CLICK ON ONE OF THE FILES TO OPEN IT, AND CLICK ON THE 3 DOTS AT THE TOP RIGHT CORNER. CHOOSE "CREATE PRESET".



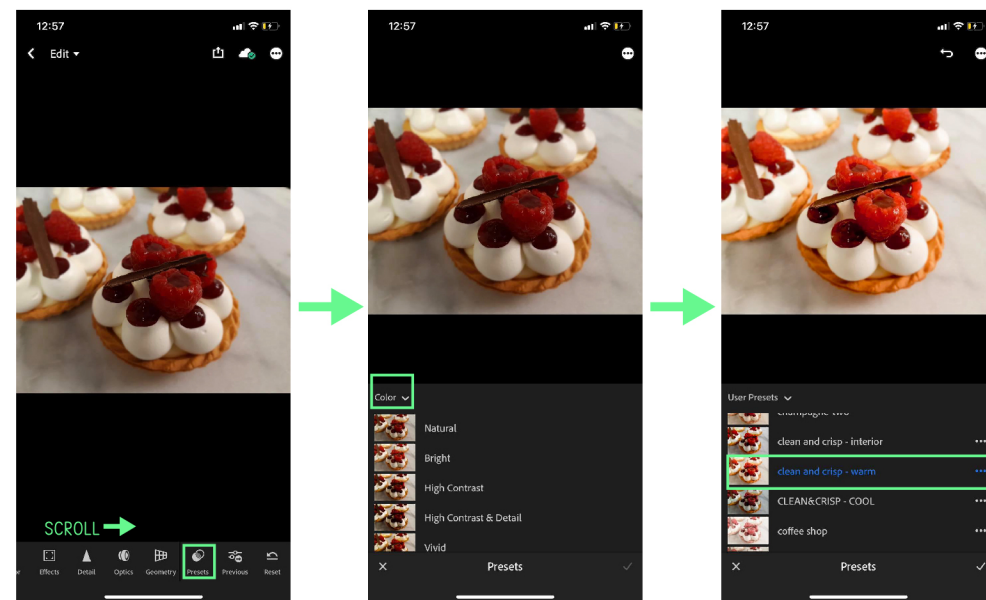
STEP SIX: NAME YOUR PRESET. IT WOULD BE BEST TO NAME THE PRESET THE NAME ON THE PHOTO YOU ARE SAVING IN THAT MOMENT. TO ORGANIZE YOUR PRESETS, YOU CAN CREATE A NEW PRESET GROUP IF YOU'D LIKE OR JUST KEEP IT IN "USERS PRESETS". CLICK THE CHECK MARK ONCE YOU'RE FINISHED

NOW YOUR PRESET IS SAVED TO YOUR PRESETS LIST!

RE-DO STEP 5-6 FOR ALL DNG FILES.



FINDING AND USING YOUR PRESETS!



CHOOSE A PHOTO YOU WOULD LIKE TO EDIT. EITHER IMPORT A NEW PHOTO FROM YOUR PHONE OR CHOOSE ONE FROM THE "ALL PHOTOS" TAB.

SCROLL THROUGH THE BOTTOM TOOLBAR UNTIL YOU SEE PRESETS. CLICK ON PRESETS AND THEN CLICK ON THE DROP DOWN ARROW. CHOOSE THE FOLDER YOU SAVED YOUR PRESETS UNDER. IF YOU DIDN'T CREATE A NEW FOLDER, IT WILL BE UNDER "USERS PRESETS".

NOW CLICK AND PLAY WITH YOUR NEW PRESETS :)

PLEASE KEEP IN MIND: THE FINAL RESULT OF THESE PRESETS ARE SUBJECTIVE TO THE QUALITY AND LIGHTING OF YOUR PHOTOS. LIKE ALL PRESETS THAT ARE PURCHASED FROM ANYWHERE, YOU MAY HAVE TO SLIGHTLY ALTER THE BRIGHTNESS/EXPOSURE AND WHITE BALANCE TO FIT WITH YOUR LIGHTING.

IF YOU WOULD LIKE SOME HELP USING YOUR PRESETS, PLEASE FEEL FREE TO CONTACT ME AND I WILL HELP YOU :)