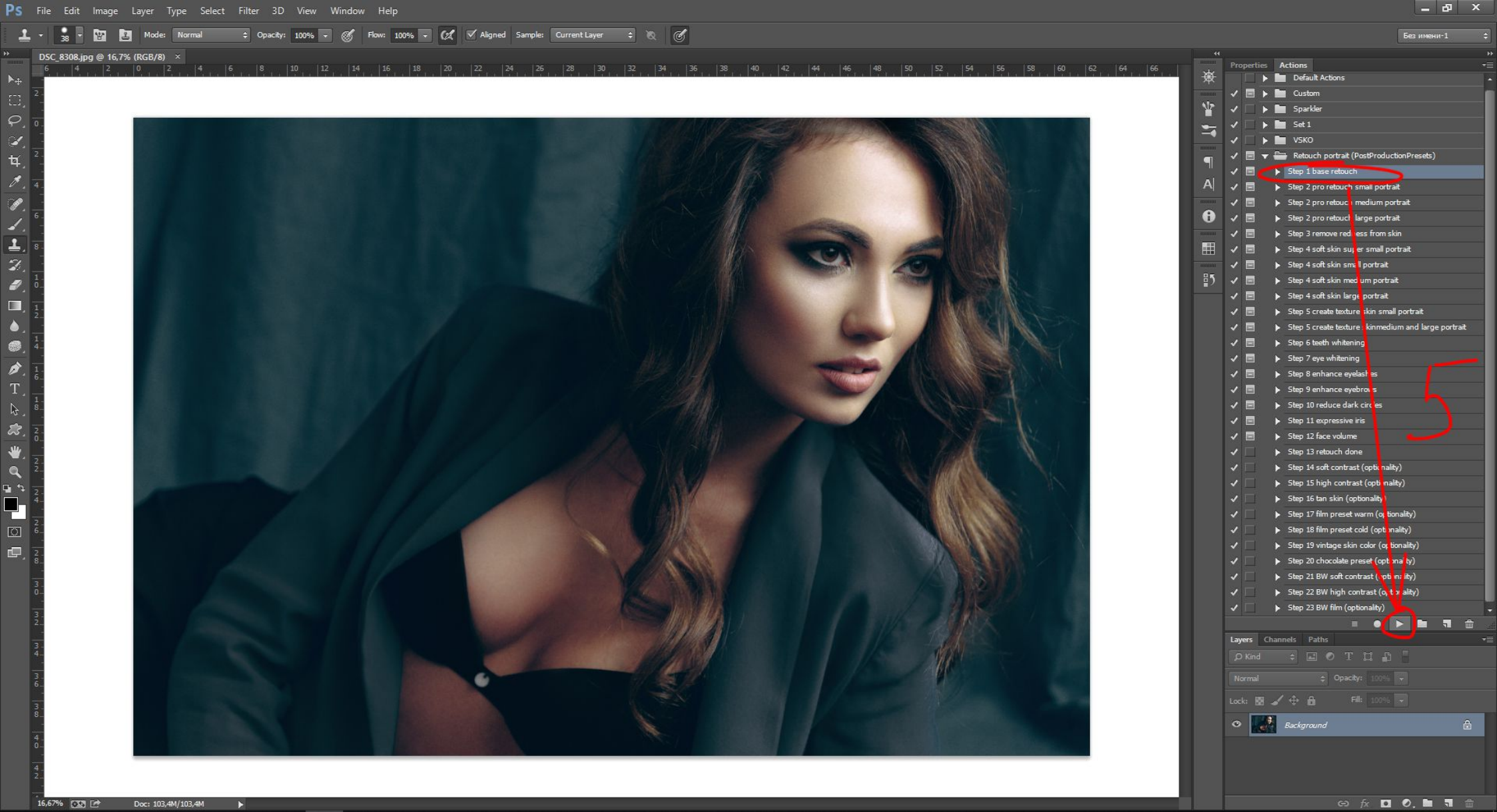
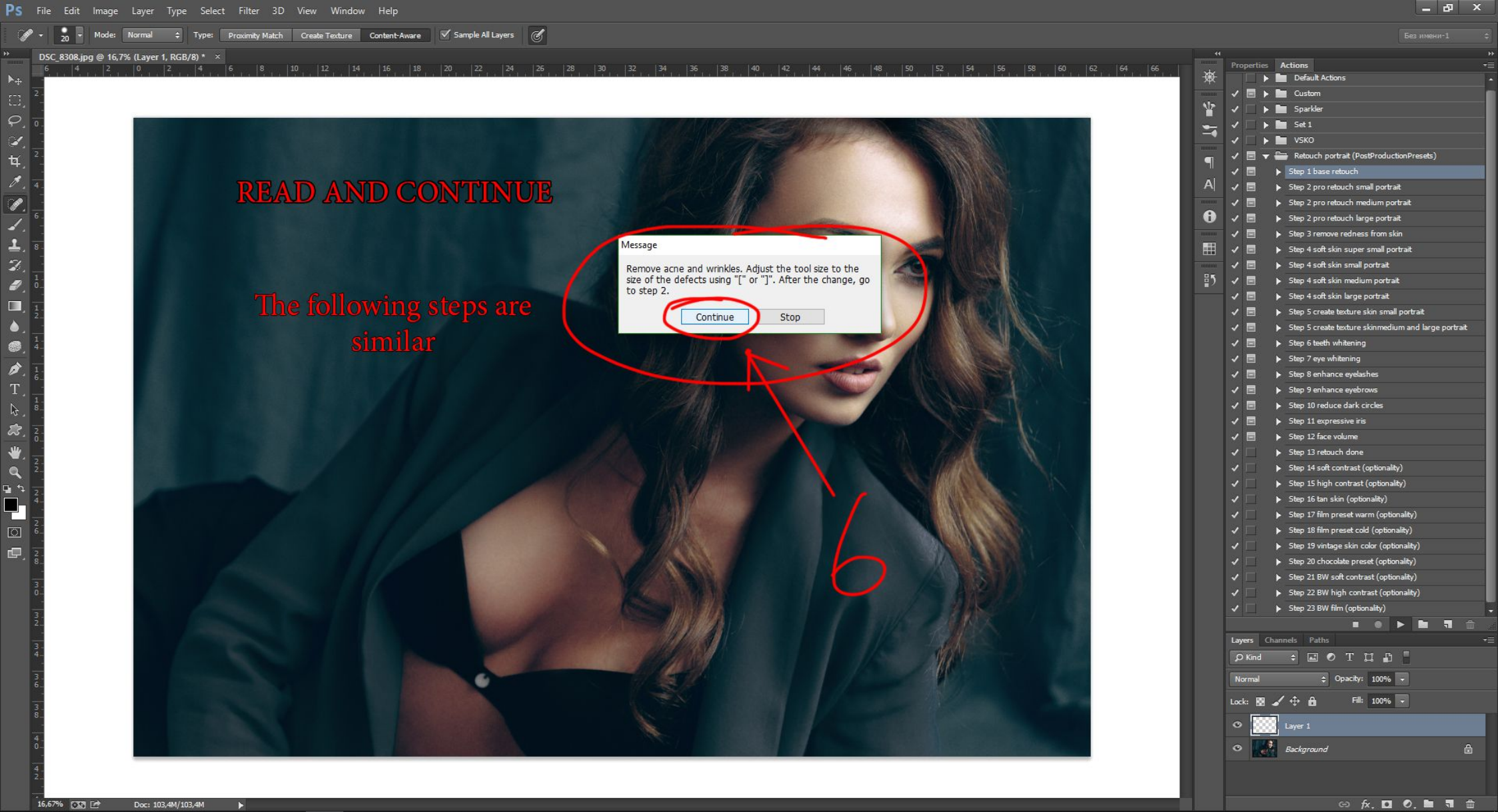


- Default Actions
- Custom
- Sparkler
- Set 1
- VSKO
- Retouch portrait (PostProductionPresets)
 - Step 1 base retouch
 - Step 2 pro retouch small portrait
 - Step 2 pro retouch medium portrait
 - Step 2 pro retouch large portrait
 - Step 3 remove redness from skin
 - Step 4 soft skin super small portrait
 - Step 4 soft skin small portrait
 - Step 4 soft skin medium portrait
 - Step 4 soft skin large portrait
 - Step 5 create texture skin small portrait
 - Step 5 create texture skinmedium and large portrait
 - Step 6 teeth whitening
 - Step 7 eye whitening
 - Step 8 enhance eyelashes
 - Step 9 enhance eyebrows
 - Step 10 reduce dark circles
 - Step 11 expressive iris
 - Step 12 face volume
 - Step 13 retouch done
 - Step 14 soft contrast (optionality)
 - Step 15 high contrast (optionality)
 - Step 16 tan skin (optionality)
 - Step 17 film preset warm (optionality)
 - Step 18 film preset cold (optionality)
 - Step 19 vintage skin color (optionality)
 - Step 20 chocolate preset (optionality)
 - Step 21 BW soft contrast (optionality)
 - Step 22 BW high contrast (optionality)
 - Step 23 BW film (optionality)

4





READ AND CONTINUE

The following steps are
similar

Message

Remove acne and wrinkles. Adjust the tool size to the size of the defects using "I" or "J". After the change, go to step 2.

Continue

Stop

6

Properties Actions

- Default Actions
- Custom
- Sparkler
- Set 1
- VSCO
- Retouch portrait (PostProductionPresets)
 - Step 1 base retouch
 - Step 2 pro retouch small portrait
 - Step 2 pro retouch medium portrait
 - Step 2 pro retouch large portrait
 - Step 3 remove redness from skin
 - Step 4 soft skin super small portrait
 - Step 4 soft skin small portrait
 - Step 4 soft skin medium portrait
 - Step 4 soft skin large portrait
 - Step 5 create texture skin small portrait
 - Step 5 create texture skinmedium and large portrait
 - Step 6 teeth whitening
 - Step 7 eye whitening
 - Step 8 enhance eyelashes
 - Step 9 enhance eyebrows
 - Step 10 reduce dark circles
 - Step 11 expressive iris
 - Step 12 face volume
 - Step 13 retouch done
 - Step 14 soft contrast (optionality)
 - Step 15 high contrast (optionality)
 - Step 16 tan skin (optionality)
 - Step 17 film preset warm (optionality)
 - Step 18 film preset cold (optionality)
 - Step 19 vintage skin color (optionality)
 - Step 20 chocolate preset (optionality)
 - Step 21 BW soft contrast (optionality)
 - Step 22 BW high contrast (optionality)
 - Step 23 BW film (optionality)

Layers Channels Paths

Kind

Normal Opacity: 100%

Lock: Fill: 100%

Layer 1

Background