

How to import/install Lightroom Presets

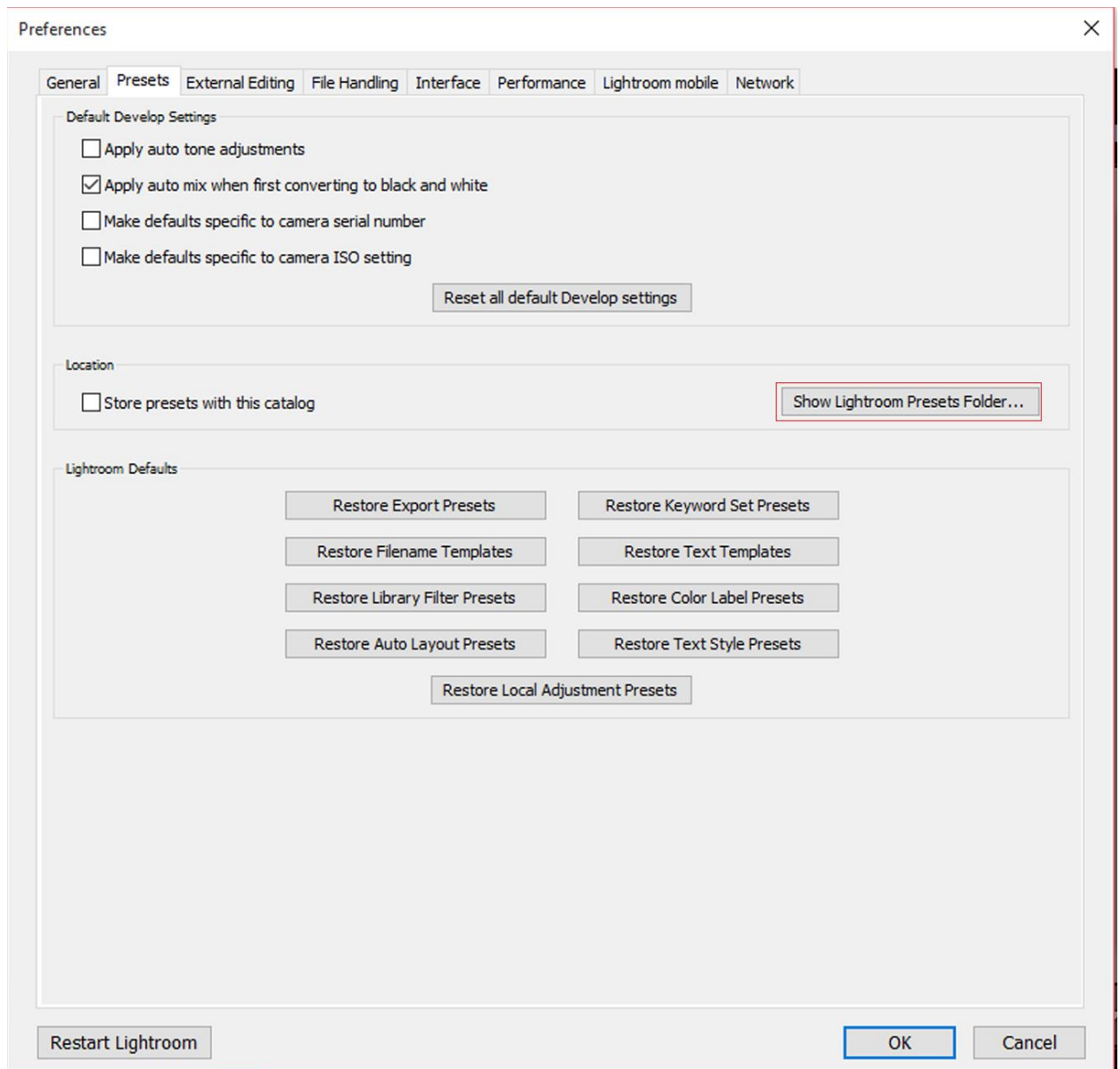
1. Open your lightroom application
2. Click on 'Edit' at the top (next to file). Then go down to 'Presences' and click on it.



3. There will be a new screen that pulls up. There will be six tabs at the top, click on presets tab (second tab).



4. Click on the box titled, **Show lightroom Preset folder.**



5. Double click on Lightroom folder.



6. Next double click on Develop preset folder.



7. Copy the preset folder “**Romantic Lightroom Presets**” You are done importing. You will have to close lightroom and restart it to see the presets.