

Hi,

Thank you for purchasing **DIGITAL ART Photoshop Action**.

### IMPORTANT - PLEASE WATCH DEMONSTRATION VIDEO BELOW

The video below will demonstrate how to use the action and how you can customize the look of your final composition after the action has finished. The video covers some important techniques that you will want to use after the action has finished.

**[CLICK HERE TO WATCH THE HELP GUIDE VIDEO](https://youtu.be/FORsPh-7IMs)**

<https://youtu.be/FORsPh-7IMs>

---

This action has been tested and working on Photoshop (**English version only**) CS5, CS6, CC 2014, CC 2015, CC 2017, CC 2018+.

If you are not using the English version of Photoshop, you can always change it to English and then back again to your native language using this method below.

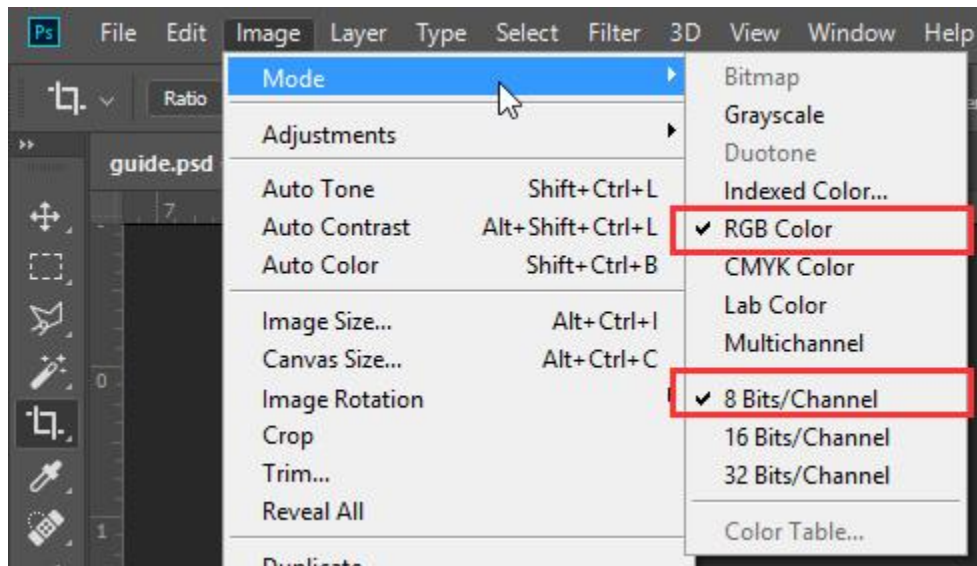
**[CLICK HERE TO WATCH THE VIDEO TO CHANGE PHOTOSHOP LANGUAGE](https://www.youtube.com/watch?v=GJAiu5W2gLE)**

<https://www.youtube.com/watch?v=GJAiu5W2gLE>

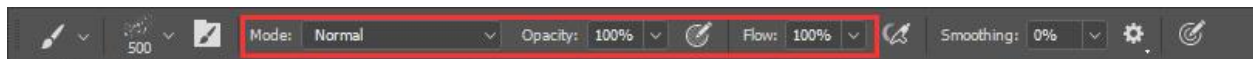
---

## IMPORTANT - PLEASE CHECK

1. Your photo is in **RGB** color mode.
2. Your photo is in **8 Bits/Channel** color mode.



3. **Press B** to select the Brush tool. On the top toolbar, make sure **Mode** is **Normal**, and both **Opacity** and **Flow** values are set to **100%**.

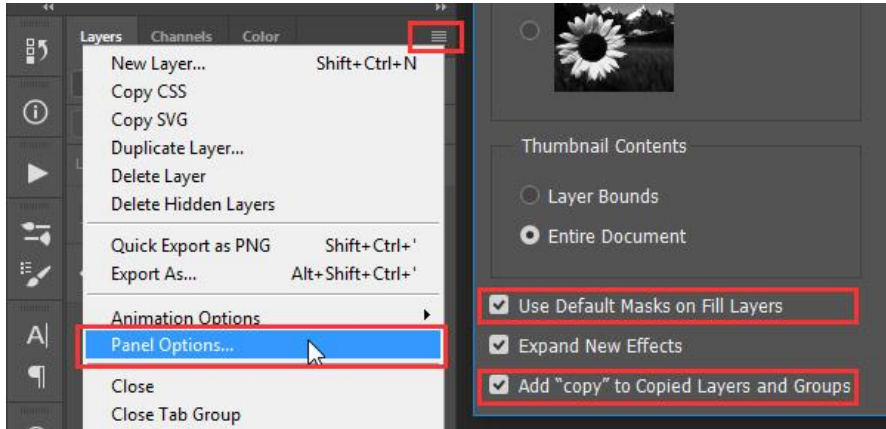


4. Avoid using small resolution images. For the best results, use Photos between **2500px - 4500px high/wide** and **72-300 dpi resolution**.

If you have a lower resolution image, go to "Image" > "Image Size..." and change them to the specified dimensions. After the action has finished rendering, you can always reduce to your original size.

5. On the **Layers** panel, click on the menu icon on the top-right corner. Go to **Panel Options...**, and make sure that the **Use Default Masks on Fill Layers** and **Add "copy" to Copied Layers and Groups** are checked.

This option applies only to CS5 and later versions of Photoshop.

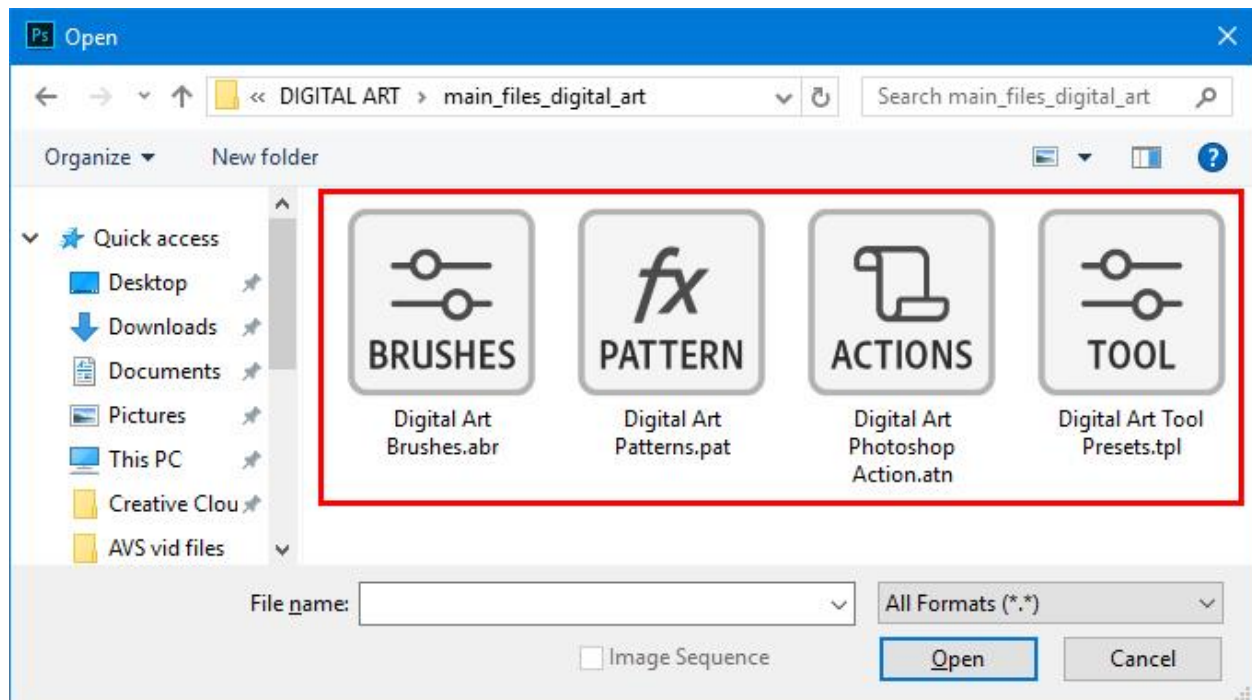


6. You are running the **English** version of Photoshop.

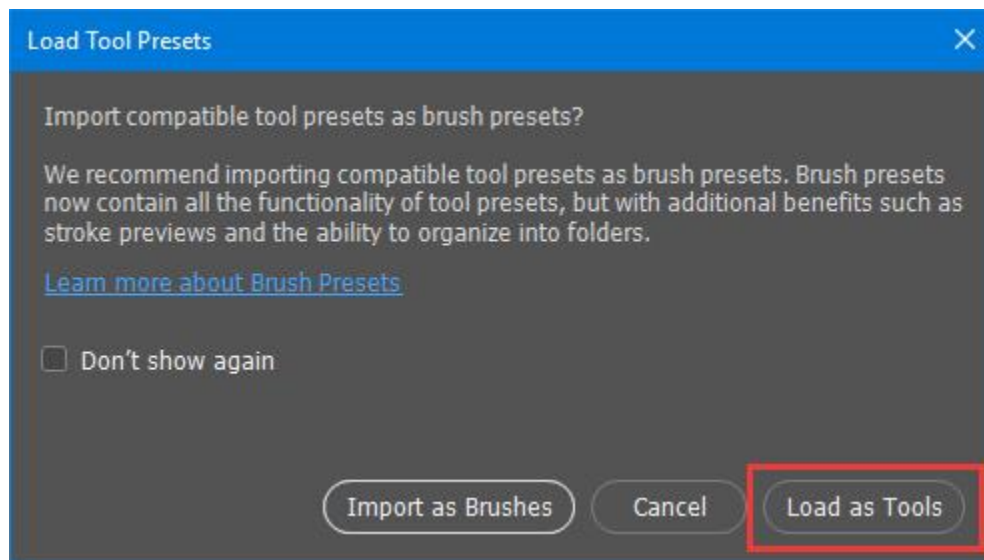
If you are experiencing errors, try resetting your Photoshop preferences. To do this, hold down Alt, Ctrl, and Shift keys (for Windows) or Command, Option and Shift keys (for Mac) while starting up Photoshop. A dialog box will appear asking if you wish to delete the preferences/settings file.

## HOW TO INSTALL - ACTION, BRUSHES, PATTERNS & TOOL PRESETS

1. Inside Photoshop, go to the **File > Open....**
2. Inside the Open window, navigate to the main Digital Art Photoshop Action folder which you downloaded.
3. Select the following files – **"Digital Art Photoshop Action.atn"**, **"Digital Art Brushes.abr"**, **"Digital Art Patterns.pat"** and **"Digital Art Tool Presets.tpl"**.
4. Click **Open** to load the files in **Photoshop**.

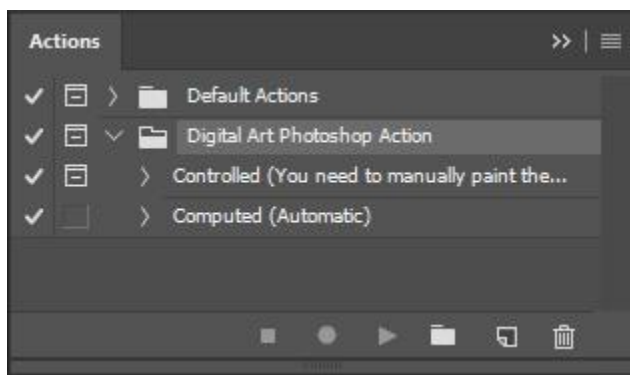


**IMPORTANT:** If you are using Photoshop CC 2018 or later, you will get a Load Tool Presets prompt when you load the Tool Presets file. Please select ***“Load as Tools”*** and not any other options.



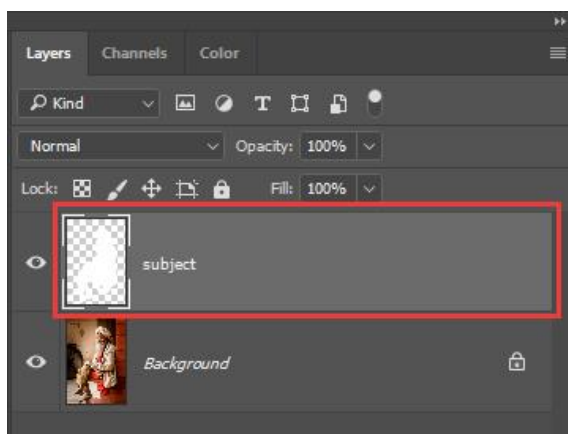
## HOW TO USE THE ACTION

1. Open a photo to work with.
2. **Press B** to select the Brush tool. On the top toolbar, make sure **Mode** is **Normal**, and both **Opacity** and **Flow** values are set to **100%**.
3. Now **play** the action according to the effect you want.



**TIP:** The **Controlled** version will ask you to manually paint the area of finer details. This version works best with portraits, figures, models, inanimate objects and macro images. The **Computed** version automatically applies the effect on the overall image. It works best with landscapes, nature, buildings and architectures images.

4. If you select the **Controlled** version, you will be prompted to manually paint the area of finer details. The brush and the layer will be selected for you, and you just need to mark the area.



**IMPORTANT:** If you run **Controlled** version, then during the time of manually painting, follow the below important steps.

- DO NOT SELECT, CREATE, DELETE or REORDER other layers or groups
- DO NOT TOUCH other ACTIONS or other COMMANDS from the actions menu
- DO NOT CHANGE BRUSH opacity and flow properties you have set earlier

If you do not follow the above mentioned important steps, the action will not work properly.

Please refer to the video tutorial if you need assistance with these steps.

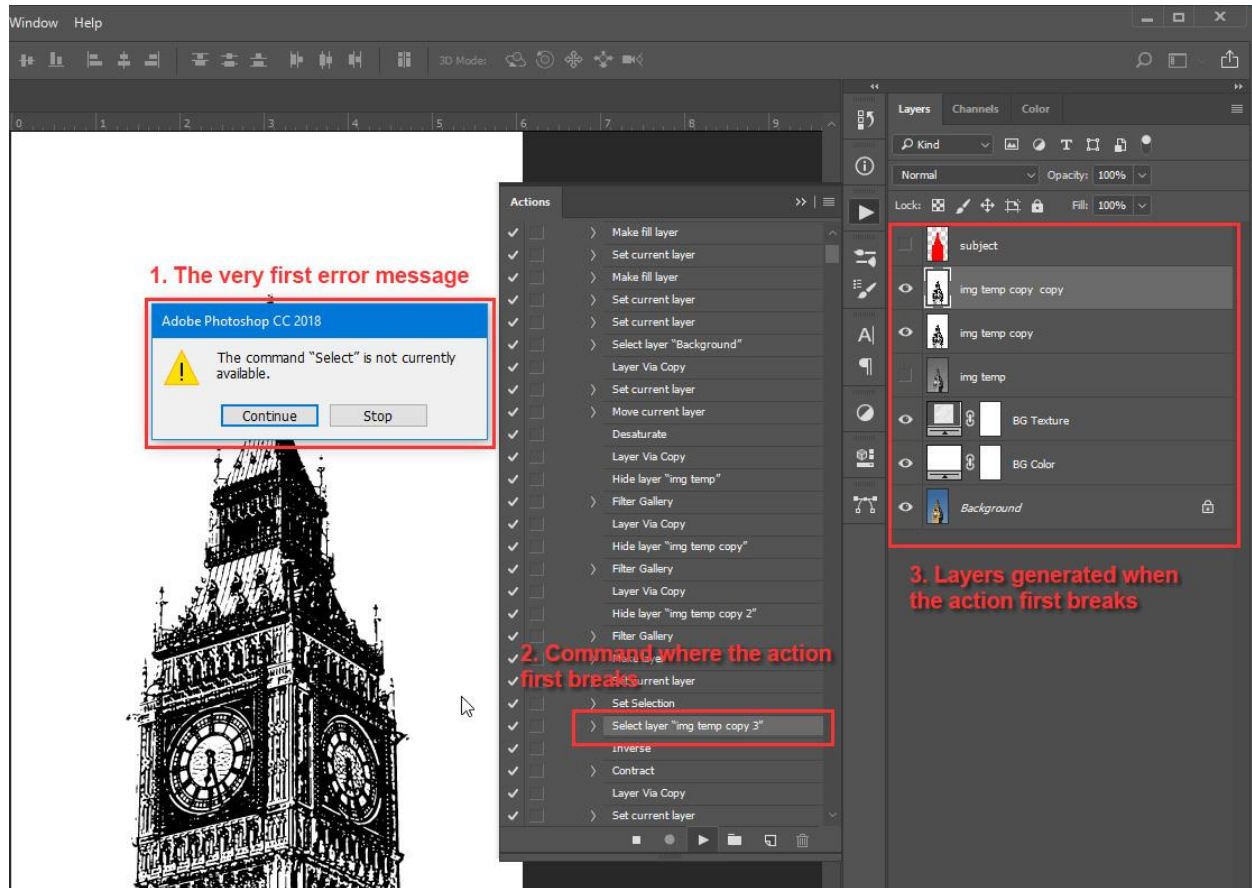
---

## FACING ANY ISSUES

If you need any help with the action, please ***comment on the item page*** or send an ***email from the profile page***.

If you are getting any error messages, please email the error screenshots with the below details in the snap-

1. The ***very first error*** message that pops up
2. The ***command*** (expand the action) where the action ***first breaks***
3. ***Layers generated*** in the Layers panel till the action breaks



Will be happy to help you.

Thank you for your support.

**IndWorks**